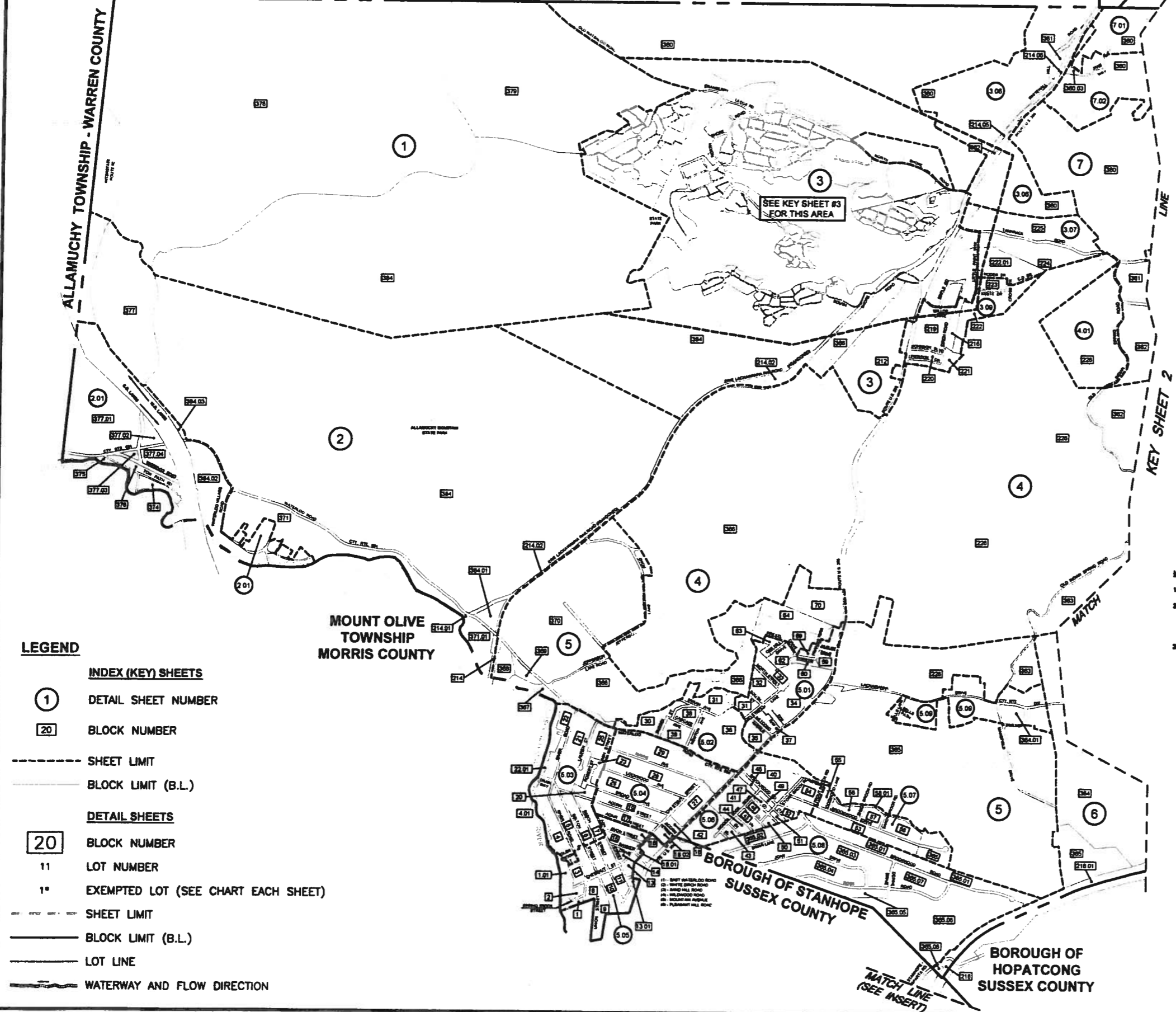
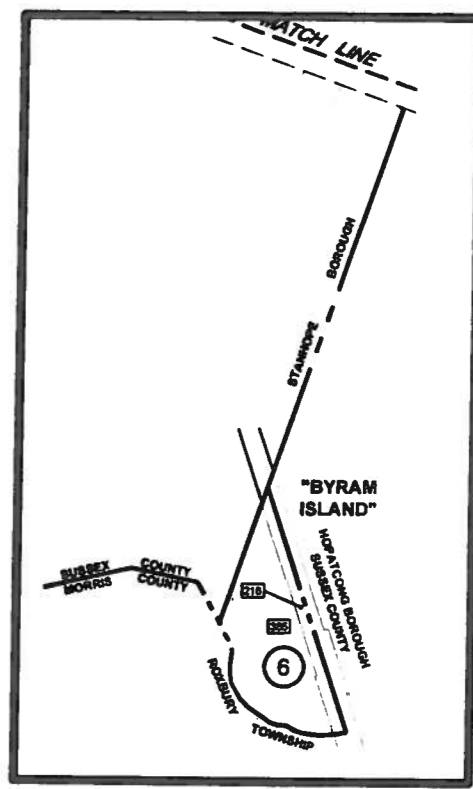


2013

REVISIONS			REVISIONS		
DATE	NAME	LICENSE No.	DATE	NAME	LICENSE No.
APRIL 2007	HAROLD E. PELLOW	P.E.&L.S./13229	AUGUST 2013	HAROLD E. PELLOW	P.E.&L.S./13229
MARCH 2010	HAROLD E. PELLOW	P.E.&L.S./13229			
AUGUST 2011	HAROLD E. PELLOW	P.E.&L.S./13229			



- LEGEND**
- INDEX (KEY) SHEETS**
- ① DETAIL SHEET NUMBER
 - 20 BLOCK NUMBER
 - SHEET LIMIT
 - BLOCK LIMIT (B.L.)
- DETAIL SHEETS**
- 20 BLOCK NUMBER
 - 11 LOT NUMBER
 - 1* EXEMPTED LOT (SEE CHART EACH SHEET)
 - SHEET LIMIT
 - BLOCK LIMIT (B.L.)
 - LOT LINE
 - ~ WATERWAY AND FLOW DIRECTION



- MAP REFERENCES:**
1. THIS MAP SUPERSEDES THE MAP DATED JAN. 25, 1963.
 2. THE DETAILS SHOWN ON THESE MAPS ARE BASED ON THE APPROVED ORIGINAL TAX MAPS AND THE GENERAL REVISIONS THERETO, PRIOR TO JUNE 2006. FOR REVISIONS AND CONDITIONS PRIOR TO JUNE 2006, SEE APPROVED ORIGINAL MAPS ON FILE IN THE MUNICIPAL TAX ASSESSOR'S OFFICE.
 3. THE AREAS, BOUNDARIES, AND DIMENSIONS SHOWN ON THESE MAPS ARE DERIVED FROM AERIAL SURVEYS, RECORDED PLANS, MAPS, DEEDS, AND WILLS AND ARE TO BE USED FOR ASSESSMENT PURPOSES ONLY.

THESE MAPS SCALED TO FIT 11"x17"

TAX MAP
TOWNSHIP OF
BYRAM

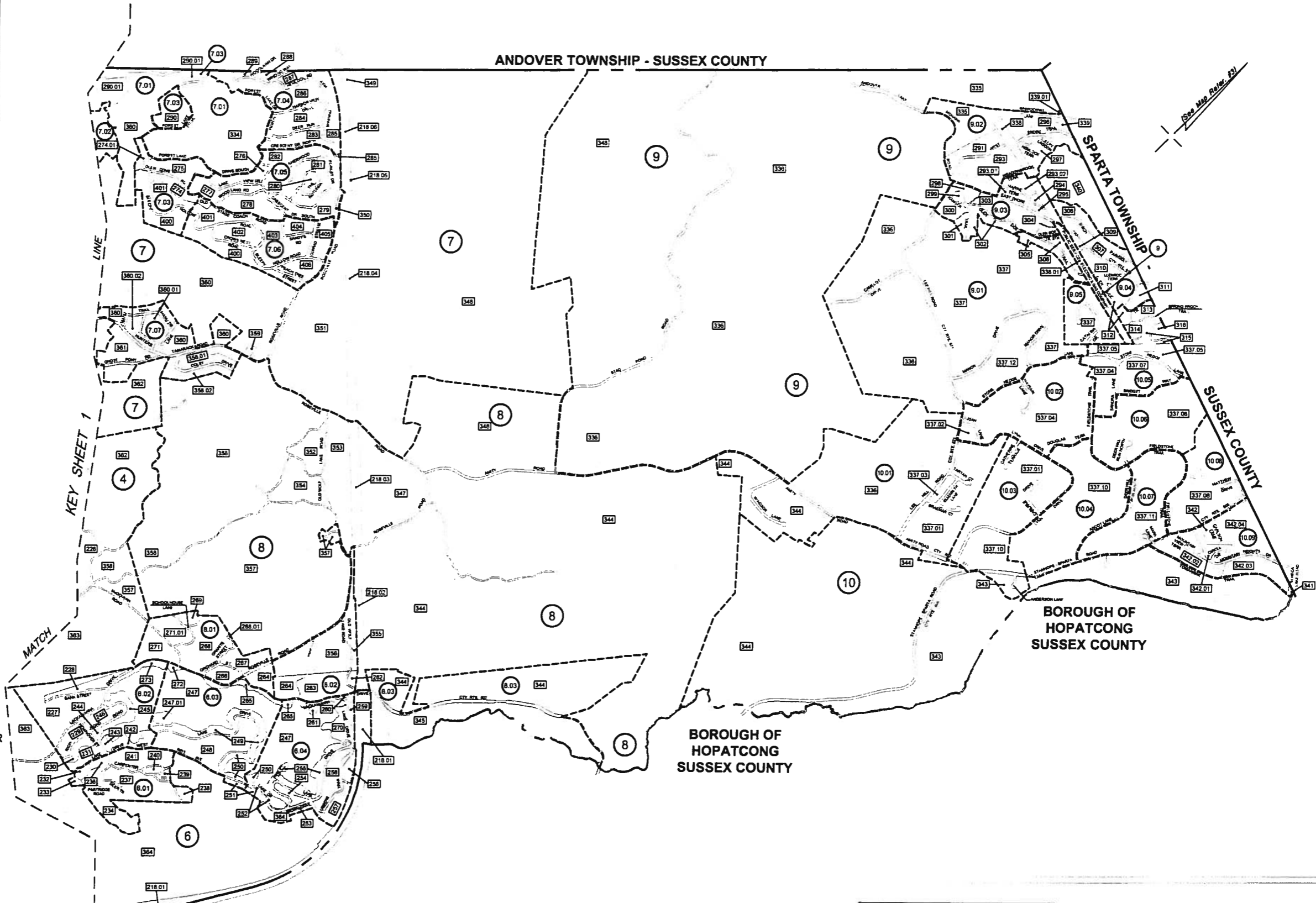
SUSSEX COUNTY
SCALE: 1" = 1,000'

NEW JERSEY
JUNE 2008

HAROLD E. PELLOW

NEW JERSEY PROFESSIONAL ENGINEER AND
LAND SURVEYOR, L.C. #13229
HAROLD E. PELLOW & ASSOCIATES, INC.
17 PLAINS ROAD, AUGUSTA, NEW JERSEY
CERTIFICATE OF AUTHORIZATION No. 24042788000
TO SHOW CONDITIONS AS OF AUG 2013

AUGUST 2013	
AUGUST 2011	
MARCH 2010	
DATE	DATE
REVISED	
HAROLD E. PELLOW & ASSOCIATES INC. HAROLD E. PELLOW - N.J. PROFESSIONAL ENGINEER & LAND SURVEYOR, L.C. NO. 13229	



LEGEND

- INDEX (KEY) SHEETS**
- ① DETAIL SHEET NUMBER
- 20 BLOCK NUMBER
- SHEET LIMIT
- BLOCK LIMIT (B.L.)
- DETAIL SHEETS**
- 20 BLOCK NUMBER
- 11 LOT NUMBER
- 1* EXEMPTED LOT (SEE CHART EACH SHEET)
- SHEET LIMIT
- BLOCK LIMIT (B.L.)
- LOT LINE
- ~ WATERWAY AND FLOW DIRECTION

I hereby certify that this map has been created under my immediate supervision and complies with the laws of the State of New Jersey

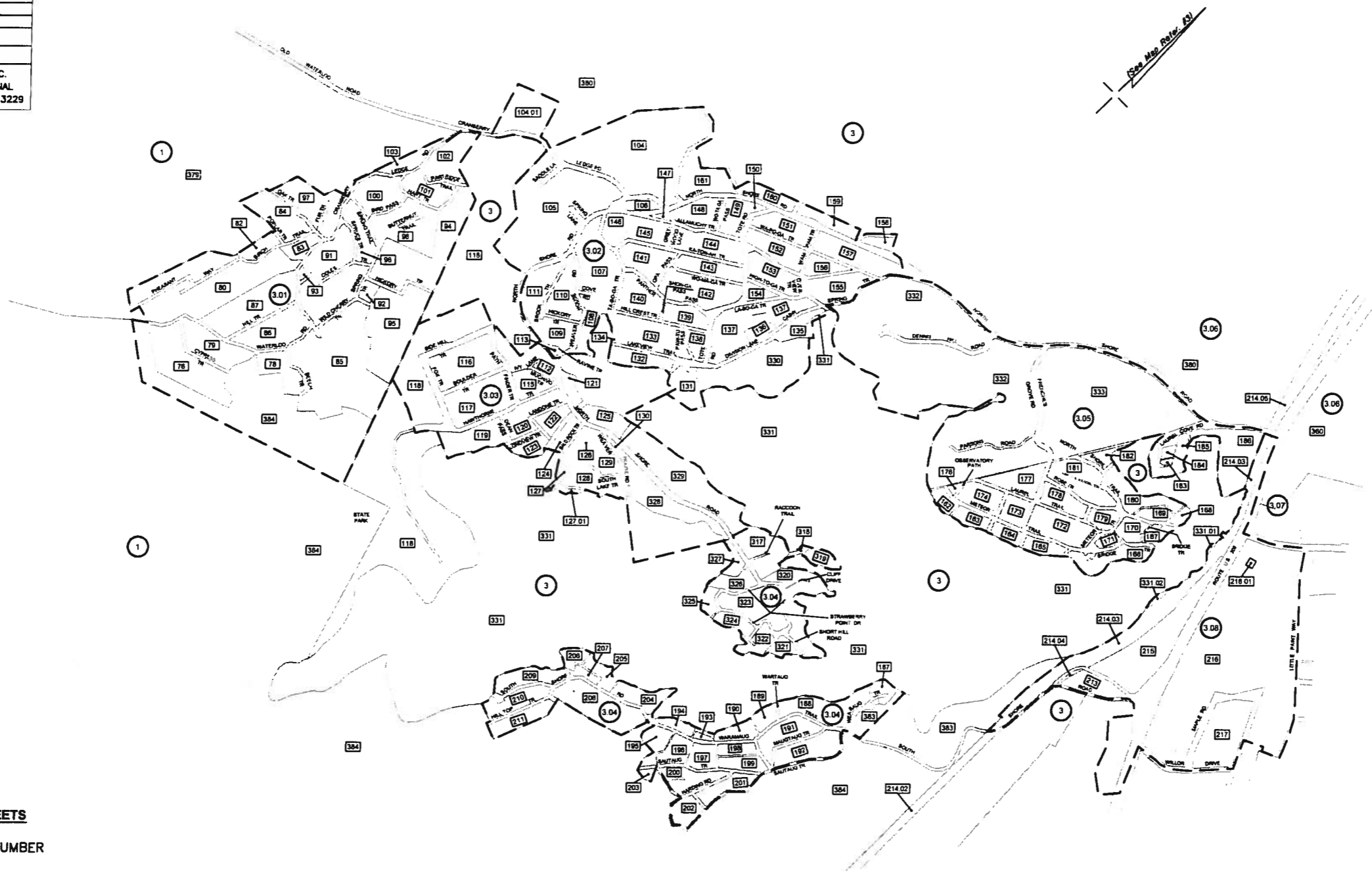
HAROLD E. PELLOW, P.E. & L.S.
PROFESSIONAL ENGINEER AND LAND SURVEYOR, N.J. LIC. NO. 13229
DATE: _____

MAP REFERENCES:

1. THIS MAP SUPERSEDES THE MAP DATED JAN. 25, 1983
2. THE DETAILS SHOWN ON THESE MAPS ARE BASED ON THE APPROVED ORIGINAL TAX MAPS AND THE GENERAL REVISIONS THERETO, PRIOR TO JUNE 2006. FOR REVISIONS AND CONDITIONS PRIOR TO JUNE 2006, SEE APPROVED ORIGINAL MAPS ON FILE IN THE MUNICIPAL TAX ASSESSOR'S OFFICE.
3. THE AREAS, BOUNDARIES, AND DIMENSIONS SHOWN ON THESE MAPS ARE DERIVED FROM AERIAL SURVEYS, RECORDED PLANS, MAPS, DEEDS, AND WILLS AND ARE TO BE USED FOR ASSESSMENT PURPOSES ONLY.

TAX MAP TOWNSHIP OF BYRAM	
SUSSEX COUNTY SCALE 1" = 1,000'	NEW JERSEY JUNE 2008
HAROLD E. PELLOW	
<small>NEW JERSEY PROFESSIONAL ENGINEER AND LAND SURVEYOR, L.C. #13229 HAROLD E. PELLOW & ASSOCIATES INC. 17 PLAINS ROAD, AUGUSTA, NEW JERSEY CERTIFICATE OF AUTHORIZATION No. 246A2786300 TO SHOW CONDITIONS AS OF AUG. 2013</small>	

AUGUST 2013	
MARCH 2010	
DATE	DATE
REVISED	
HAROLD E. PELLOW & ASSOCIATES INC.	
HAROLD E. PELLOW - N.J. PROFESSIONAL ENGINEER & LAND SURVEYOR, L.C. NO. 13229	



LEGEND

INDEX (KEY) SHEETS

- ① DETAIL SHEET NUMBER
- 20 BLOCK NUMBER

- SHEET LIMIT
- BLOCK LIMIT (B.L.)

DETAIL SHEETS

- 20 BLOCK NUMBER
- 11 LOT NUMBER
- 1* EXEMPTED LOT (SEE CHART EACH SHEET)

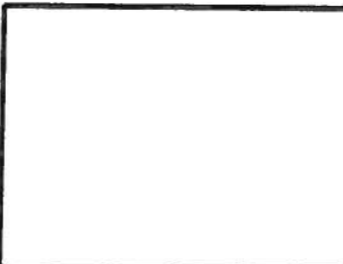
- SHEET LIMIT
- BLOCK LIMIT (B.L.)
- LOT LINE
- ~~~~~ WATERWAY AND FLOW DIRECTION

I hereby certify that this map has been created under my immediate supervision and complies with the laws of the State of New Jersey

HAROLD E. PELLOW, P.E. & L.S.
 PROFESSIONAL ENGINEER AND LAND SURVEYOR, N.J. LIC. NO. 13229
 DATE: _____

MAP REFERENCES:

1. THIS MAP SUPERSEDES THE MAP DATED JAN. 25, 1983.
2. THE DETAILS SHOWN ON THESE MAPS ARE BASED ON THE APPROVED ORIGINAL TAX MAPS AND THE GENERAL REVISIONS THERETO, PRIOR TO JUNE 2008. FOR REVISIONS AND CONDITIONS PRIOR TO JUNE 2008, SEE APPROVED ORIGINAL MAPS ON FILE IN THE MUNICIPAL TAX ASSESSOR'S OFFICE.
3. THE AREAS, BOUNDARIES, AND DIMENSIONS SHOWN ON THESE MAPS ARE DERIVED FROM AERIAL SURVEYS, RECORDED PLANS, MAPS, DEEDS, AND WILLS AND ARE TO BE USED FOR ASSESSMENT PURPOSES ONLY.



**TAX MAP
 TOWNSHIP OF
 BYRAM**

SUSSEX COUNTY
 SCALE: 1" = 400'

NEW JERSEY
 JUNE 2008

HAROLD E. PELLOW

NEW JERSEY PROFESSIONAL ENGINEER AND
 LAND SURVEYOR, L.C. #13229
 HAROLD E. PELLOW & ASSOCIATES, INC.
 17 PLAINS ROAD, AUGUSTA, NEW JERSEY
 CERTIFICATE OF AUTHORIZATION No. 246A2769300
 TO SHOW CONDITIONS AS OF AUG. 2013