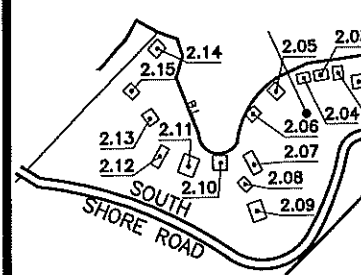


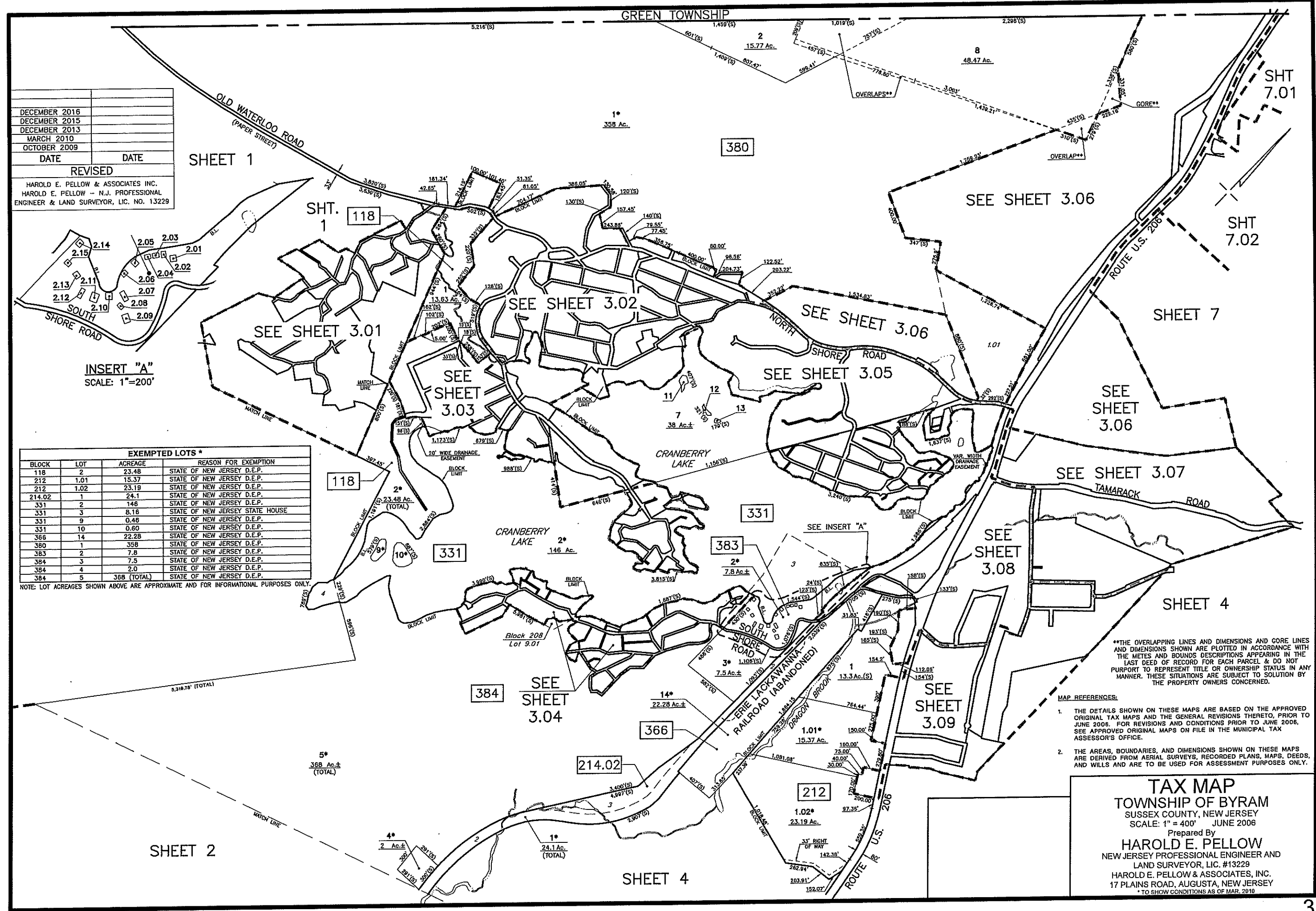
DECEMBER 2016	
DECEMBER 2015	
DECEMBER 2013	
MARCH 2010	
OCTOBER 2009	
DATE	DATE
REVISED	
HAROLD E. PELLOW & ASSOCIATES INC.	
HAROLD E. PELLOW - N.J. PROFESSIONAL ENGINEER & LAND SURVEYOR, LIC. NO. 13229	



INSERT "A"  
SCALE: 1"=200'

EXEMPTED LOTS *			
BLOCK	LOT	ACREAGE	REASON FOR EXEMPTION
118	2	23.48	STATE OF NEW JERSEY D.E.P.
212	1.01	15.37	STATE OF NEW JERSEY D.E.P.
212	1.02	23.19	STATE OF NEW JERSEY D.E.P.
214.02	1	24.1	STATE OF NEW JERSEY D.E.P.
331	2	146	STATE OF NEW JERSEY D.E.P.
331	3	8.16	STATE OF NEW JERSEY STATE HOUSE
331	9	0.48	STATE OF NEW JERSEY D.E.P.
331	10	0.60	STATE OF NEW JERSEY D.E.P.
366	14	22.28	STATE OF NEW JERSEY D.E.P.
380	1	358	STATE OF NEW JERSEY D.E.P.
383	2	7.8	STATE OF NEW JERSEY D.E.P.
384	3	7.5	STATE OF NEW JERSEY D.E.P.
384	4	2.0	STATE OF NEW JERSEY D.E.P.
384	5	368 (TOTAL)	STATE OF NEW JERSEY D.E.P.

NOTE: LOT ACREAGES SHOWN ABOVE ARE APPROXIMATE AND FOR INFORMATIONAL PURPOSES ONLY.



\*\*THE OVERLAPPING LINES AND DIMENSIONS AND GORE LINES AND DIMENSIONS SHOWN ARE PLOTTED IN ACCORDANCE WITH THE METES AND BOUNDS DESCRIPTIONS APPEARING IN THE LAST DEED OF RECORD FOR EACH PARCEL & DO NOT PURPORT TO REPRESENT TITLE OR OWNERSHIP STATUS IN ANY MANNER. THESE SITUATIONS ARE SUBJECT TO SOLUTION BY THE PROPERTY OWNERS CONCERNED.

- MAP REFERENCES:
1. THE DETAILS SHOWN ON THESE MAPS ARE BASED ON THE APPROVED ORIGINAL TAX MAPS AND THE GENERAL REVISIONS THERETO, PRIOR TO JUNE 2006. FOR REVISIONS AND CONDITIONS PRIOR TO JUNE 2006, SEE APPROVED ORIGINAL MAPS ON FILE IN THE MUNICIPAL TAX ASSESSOR'S OFFICE.
  2. THE AREAS, BOUNDARIES, AND DIMENSIONS SHOWN ON THESE MAPS ARE DERIVED FROM AERIAL SURVEYS, RECORDED PLANS, MAPS, DEEDS, AND WILLS AND ARE TO BE USED FOR ASSESSMENT PURPOSES ONLY.

**TAX MAP**  
**TOWNSHIP OF BYRAM**  
 SUSSEX COUNTY, NEW JERSEY  
 SCALE: 1" = 400' JUNE 2006  
 Prepared By  
**HAROLD E. PELLOW**  
 NEW JERSEY PROFESSIONAL ENGINEER AND  
 LAND SURVEYOR, LIC. #13229  
 HAROLD E. PELLOW & ASSOCIATES, INC.  
 17 PLAINS ROAD, AUGUSTA, NEW JERSEY  
 \* TO SHOW CONDITIONS AS OF MAR. 2010



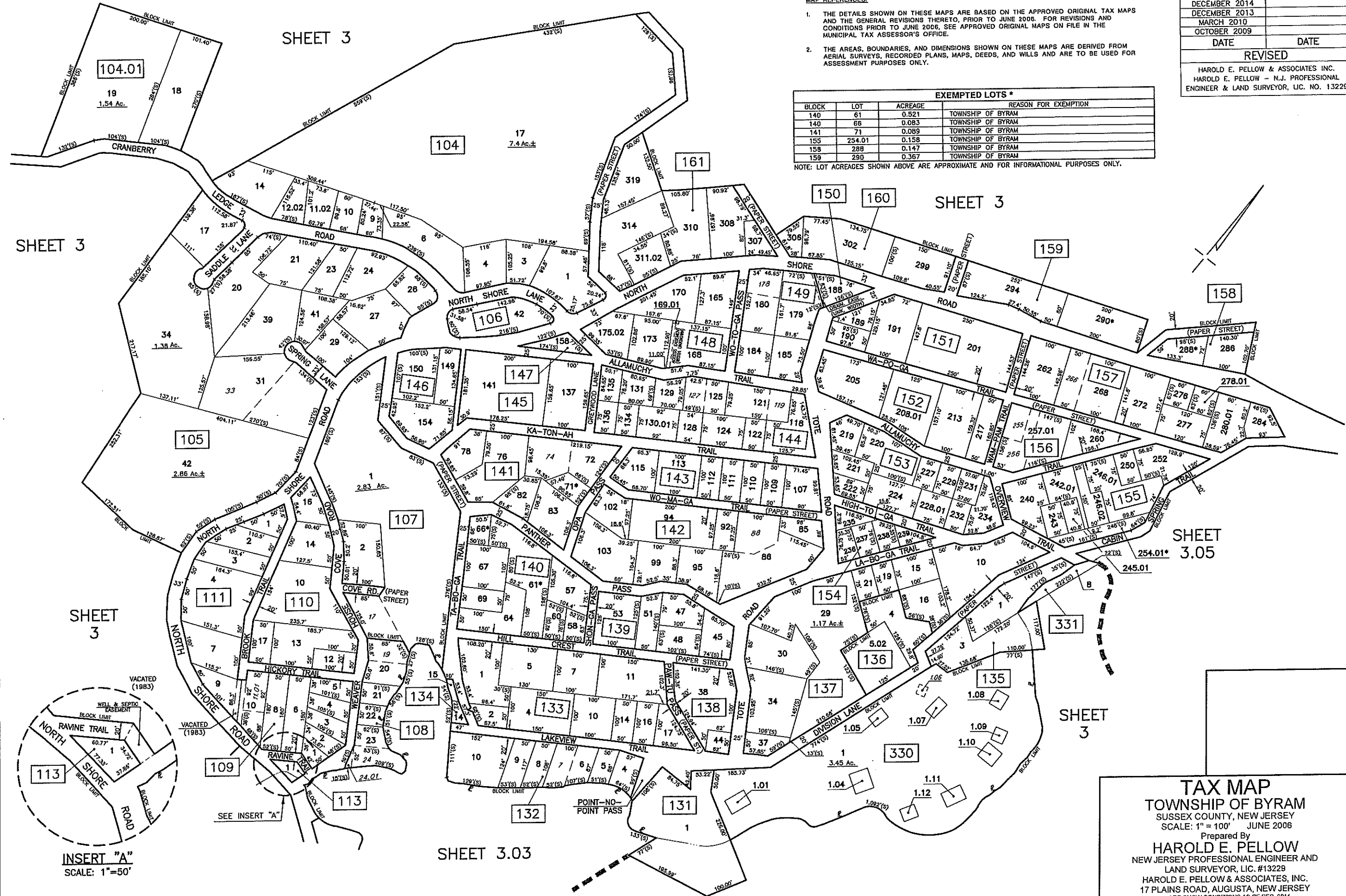
DECEMBER 2015	
DECEMBER 2014	
DECEMBER 2013	
MARCH 2010	
OCTOBER 2009	
DATE	DATE
REVISED	
HAROLD E. PELLOW & ASSOCIATES INC. HAROLD E. PELLOW - N.J. PROFESSIONAL ENGINEER & LAND SURVEYOR, LIC. NO. 13229	

MAP REFERENCES:

- THE DETAILS SHOWN ON THESE MAPS ARE BASED ON THE APPROVED ORIGINAL TAX MAPS AND THE GENERAL REVISIONS THERETO, PRIOR TO JUNE 2006. FOR REVISIONS AND CONDITIONS PRIOR TO JUNE 2006, SEE APPROVED ORIGINAL MAPS ON FILE IN THE MUNICIPAL TAX ASSESSOR'S OFFICE.
- THE AREAS, BOUNDARIES, AND DIMENSIONS SHOWN ON THESE MAPS ARE DERIVED FROM AERIAL SURVEYS, RECORDED PLANS, MAPS, DEEDS, AND WILLS AND ARE TO BE USED FOR ASSESSMENT PURPOSES ONLY.

EXEMPTED LOTS *			
BLOCK	LOT	ACREAGE	REASON FOR EXEMPTION
140	61	0.521	TOWNSHIP OF BYRAM
140	66	0.083	TOWNSHIP OF BYRAM
141	71	0.089	TOWNSHIP OF BYRAM
155	254.01	0.158	TOWNSHIP OF BYRAM
158	288	0.147	TOWNSHIP OF BYRAM
159	290	0.367	TOWNSHIP OF BYRAM

NOTE: LOT ACREAGES SHOWN ABOVE ARE APPROXIMATE AND FOR INFORMATIONAL PURPOSES ONLY.



SHEET 3

SHEET 3

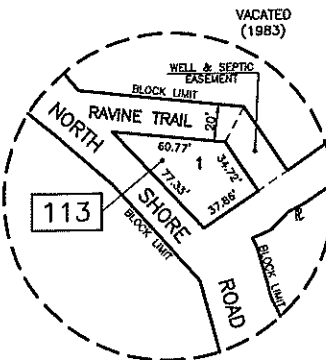
SHEET 3

SHEET 3.05

SHEET 3

SHEET 3

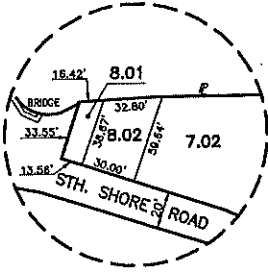
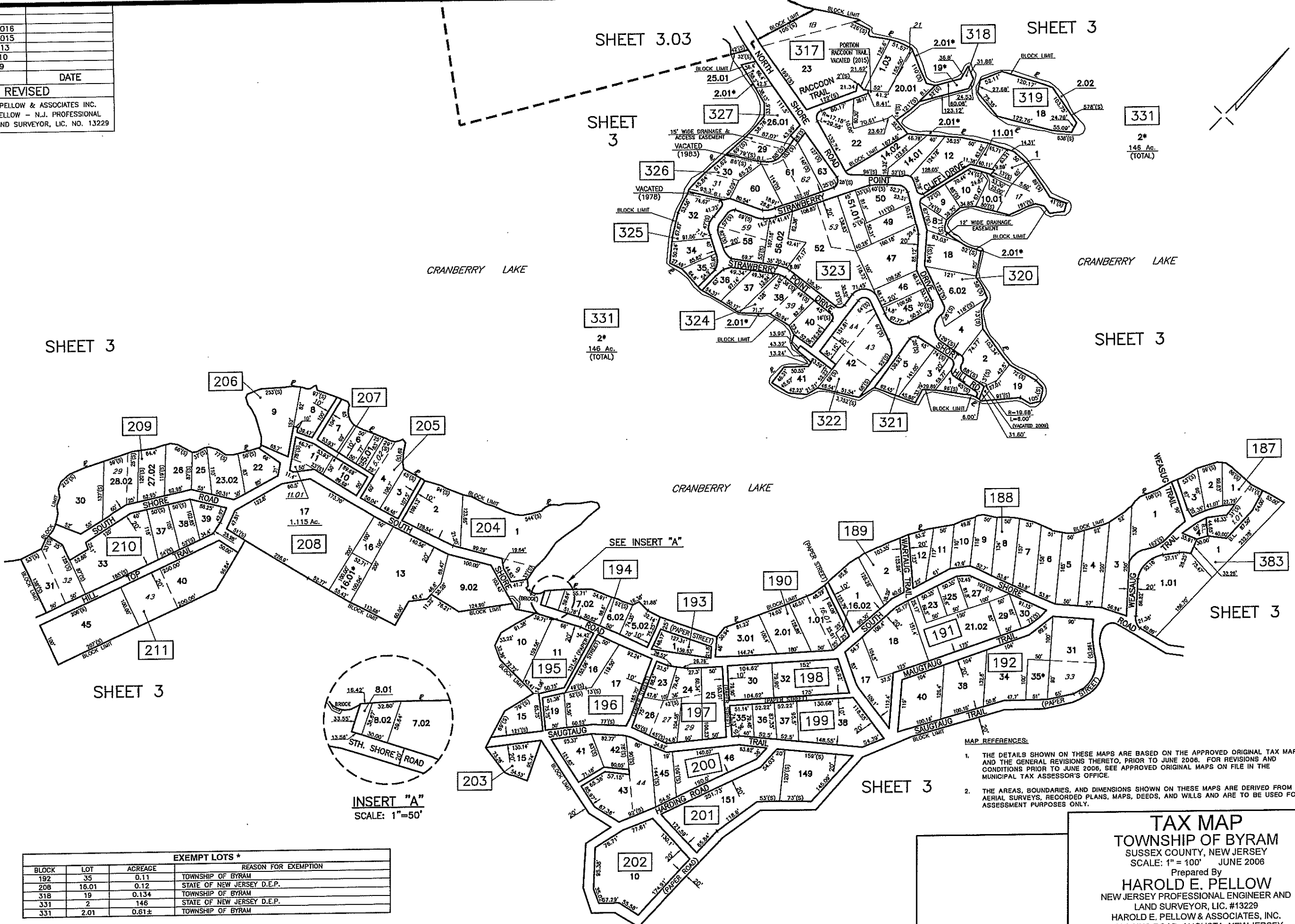
SHEET 3.03



INSERT "A"  
SCALE: 1"=50'

**TAX MAP**  
**TOWNSHIP OF BYRAM**  
 SUSSEX COUNTY, NEW JERSEY  
 SCALE: 1" = 100' JUNE 2006  
 Prepared By  
**HAROLD E. PELLOW**  
 NEW JERSEY PROFESSIONAL ENGINEER AND  
 LAND SURVEYOR, LIC. #13229  
 HAROLD E. PELLOW & ASSOCIATES, INC.  
 17 PLAINS ROAD, AUGUSTA, NEW JERSEY  
 \* TO SHOW CONDITIONS AS OF DEC. 2014

DECEMBER 2016	
DECEMBER 2015	
AUGUST 2013	
MARCH 2010	
JULY 2009	
DATE	DATE
REVISED	
HAROLD E. PELLOW & ASSOCIATES INC. HAROLD E. PELLOW - N.J. PROFESSIONAL ENGINEER & LAND SURVEYOR, LIC. NO. 13229	



INSERT "A"  
SCALE: 1"=50'

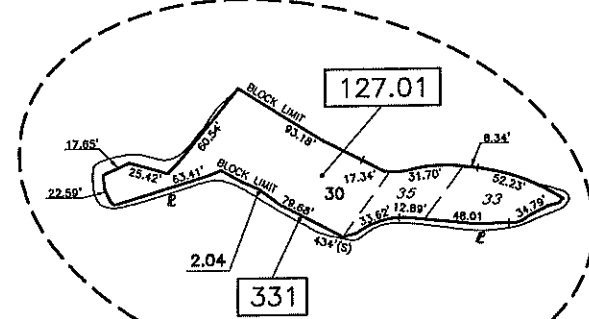
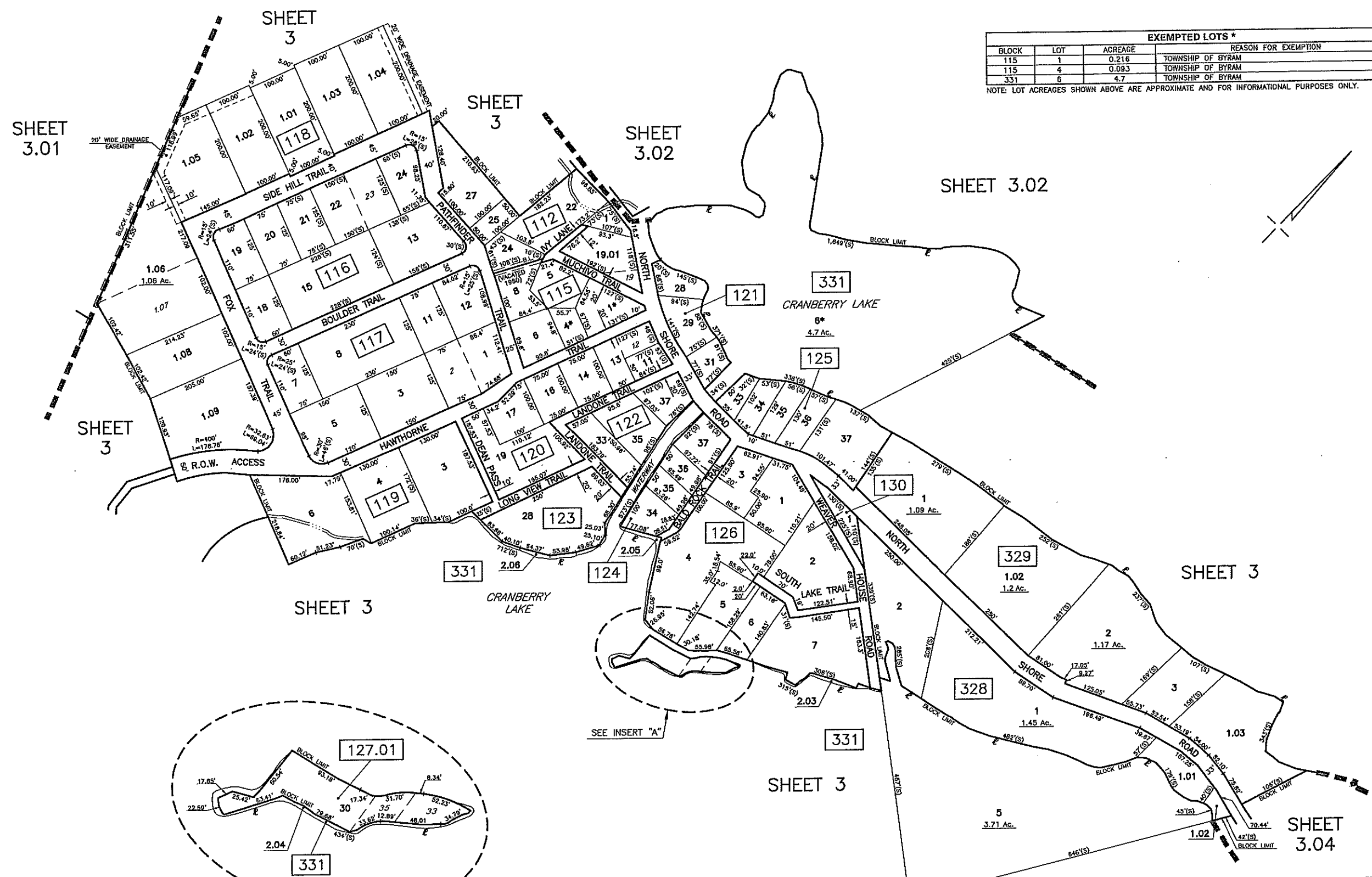
EXEMPT LOTS *			
BLOCK	LOT	ACREAGE	REASON FOR EXEMPTION
192	35	0.11	TOWNSHIP OF BYRAM
206	16.01	0.12	STATE OF NEW JERSEY D.E.P.
318	19	0.134	TOWNSHIP OF BYRAM
331	2	146	STATE OF NEW JERSEY D.E.P.
331	2.01	0.61±	TOWNSHIP OF BYRAM

- MAP REFERENCES:
- THE DETAILS SHOWN ON THESE MAPS ARE BASED ON THE APPROVED ORIGINAL TAX MAPS AND THE GENERAL REVISIONS THERETO, PRIOR TO JUNE 2006. FOR REVISIONS AND CONDITIONS PRIOR TO JUNE 2006, SEE APPROVED ORIGINAL MAPS ON FILE IN THE MUNICIPAL TAX ASSESSOR'S OFFICE.
  - THE AREAS, BOUNDARIES, AND DIMENSIONS SHOWN ON THESE MAPS ARE DERIVED FROM AERIAL SURVEYS, RECORDED PLANS, MAPS, DEEDS, AND WILLS AND ARE TO BE USED FOR ASSESSMENT PURPOSES ONLY.

**TAX MAP**  
**TOWNSHIP OF BYRAM**  
 SUSSEX COUNTY, NEW JERSEY  
 SCALE: 1" = 100' JUNE 2006  
 Prepared By  
**HAROLD E. PELLOW**  
 NEW JERSEY PROFESSIONAL ENGINEER AND  
 LAND SURVEYOR, LIC. #13229  
 HAROLD E. PELLOW & ASSOCIATES, INC.  
 17 PLAINS ROAD, AUGUSTA, NEW JERSEY  
 \* TO SHOW CONDITIONS AS OF JUNE 2006

EXEMPTED LOTS *			
BLOCK	LOT	ACREAGE	REASON FOR EXEMPTION
115	1	0.216	TOWNSHIP OF BYRAM
115	4	0.093	TOWNSHIP OF BYRAM
331	6	4.7	TOWNSHIP OF BYRAM

NOTE: LOT ACREAGES SHOWN ABOVE ARE APPROXIMATE AND FOR INFORMATIONAL PURPOSES ONLY.



INSERT "A"  
SCALE: 1"=50'

MAP REFERENCES:

- THE DETAILS SHOWN ON THESE MAPS ARE BASED ON THE APPROVED ORIGINAL TAX MAPS AND THE GENERAL REVISIONS THERETO, PRIOR TO JUNE 2006. FOR REVISIONS AND CONDITIONS PRIOR TO JUNE 2006, SEE APPROVED ORIGINAL MAPS ON FILE IN THE MUNICIPAL TAX ASSESSOR'S OFFICE.
- THE AREAS, BOUNDARIES, AND DIMENSIONS SHOWN ON THESE MAPS ARE DERIVED FROM AERIAL SURVEYS, RECORDED PLANS, MAPS, DEEDS, AND WILLS AND ARE TO BE USED FOR ASSESSMENT PURPOSES ONLY.

DATE	DATE
DECEMBER 2016	
MARCH 2010	
JULY 2009	
REVISOR	DATE
HAROLD E. PELLOW & ASSOCIATES INC. HAROLD E. PELLOW - N.J. PROFESSIONAL ENGINEER & LAND SURVEYOR, LIC. NO. 13229	

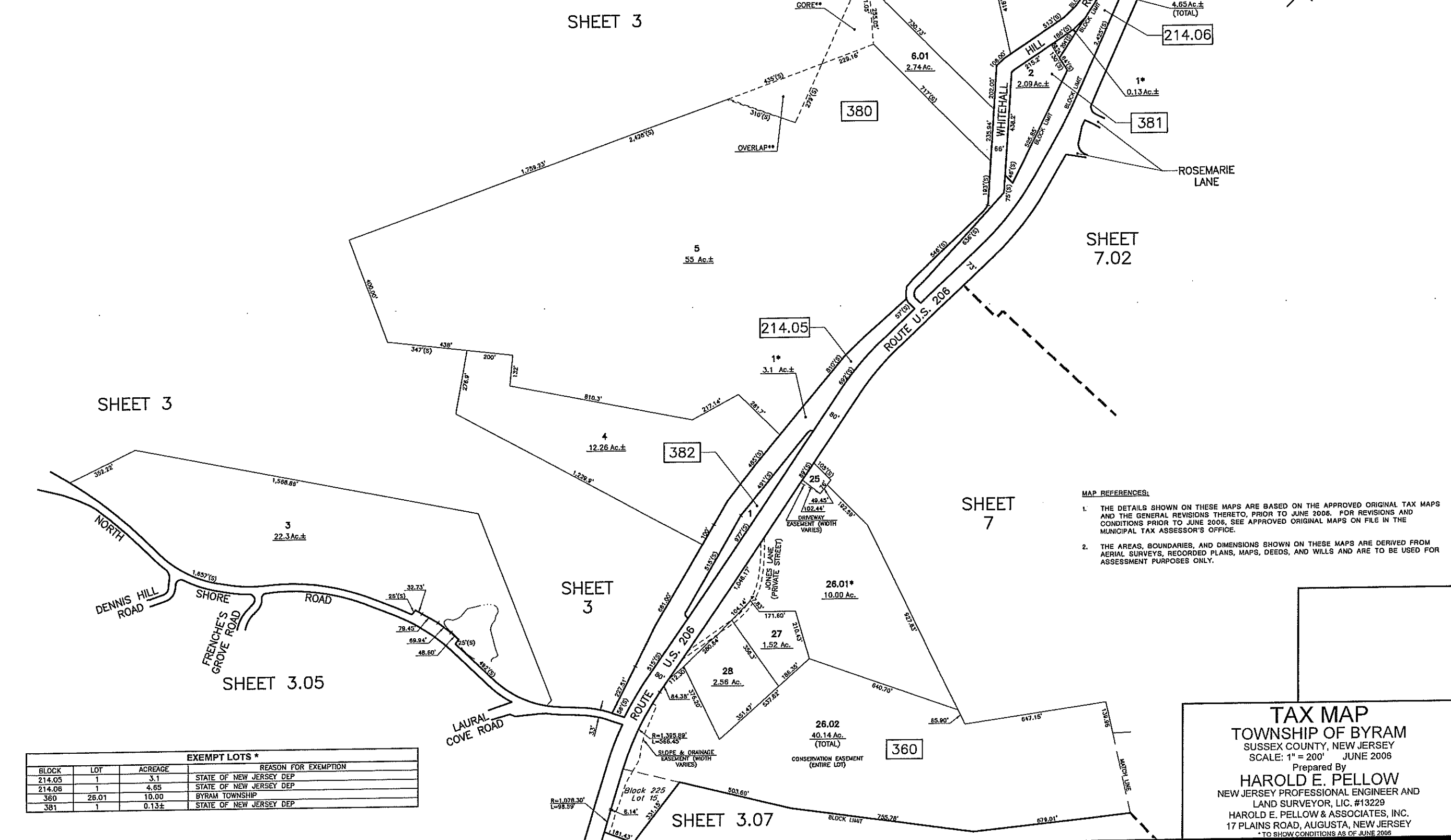
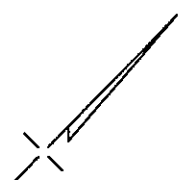
**TAX MAP**  
TOWNSHIP OF BYRAM  
SUSSEX COUNTY, NEW JERSEY  
SCALE: 1" = 100' JUNE 2006  
Prepared By  
**HAROLD E. PELLOW**  
NEW JERSEY PROFESSIONAL ENGINEER AND  
LAND SURVEYOR, LIC. #13229  
HAROLD E. PELLOW & ASSOCIATES, INC.  
17 PLAINS ROAD, AUGUSTA, NEW JERSEY  
\* TO SHOW CONDITIONS AS OF MAR. 2010





AUGUST 2013	
AUGUST 2011	
DATE	DATE
REVISED	
HAROLD E. PELLOW & ASSOCIATES INC.	
HAROLD E. PELLOW - N.J. PROFESSIONAL ENGINEER & LAND SURVEYOR, LIC. NO. 13229	

\*\*THE OVERLAPPING LINES AND DIMENSIONS AND GORE LINES AND DIMENSIONS SHOWN ARE PLOTTED IN ACCORDANCE WITH THE METES AND BOUNDS DESCRIPTIONS APPEARING IN THE LAST DEED OF RECORD FOR EACH PARCEL & DO NOT PURPORT TO REPRESENT TITLE OR OWNERSHIP STATUS IN ANY MANNER. THESE SITUATIONS ARE SUBJECT TO SOLUTION BY THE PROPERTY OWNERS CONCERNED.



- MAP REFERENCES:**
1. THE DETAILS SHOWN ON THESE MAPS ARE BASED ON THE APPROVED ORIGINAL TAX MAPS AND THE GENERAL REVISIONS THERETO, PRIOR TO JUNE 2006. FOR REVISIONS AND CONDITIONS PRIOR TO JUNE 2006, SEE APPROVED ORIGINAL MAPS ON FILE IN THE MUNICIPAL TAX ASSESSOR'S OFFICE.
  2. THE AREAS, BOUNDARIES, AND DIMENSIONS SHOWN ON THESE MAPS ARE DERIVED FROM AERIAL SURVEYS, RECORDED PLANS, MAPS, DEEDS, AND WILLS AND ARE TO BE USED FOR ASSESSMENT PURPOSES ONLY.

SHEET 3

SHEET 7.01

SHEET 7.02

SHEET 7

SHEET 3

SHEET 3.07

SHEET 3.05

**EXEMPT LOTS \***

BLOCK	LOT	ACREAGE	REASON FOR EXEMPTION
214.05	1	3.1	STATE OF NEW JERSEY DEP
214.06	1	4.95	STATE OF NEW JERSEY DEP
360	26.01	10.00	BYRAM TOWNSHIP
381	1	0.13±	STATE OF NEW JERSEY DEP

**TAX MAP**  
**TOWNSHIP OF BYRAM**  
 SUSSEX COUNTY, NEW JERSEY  
 SCALE: 1" = 200' JUNE 2006  
 Prepared By  
**HAROLD E. PELLOW**  
 NEW JERSEY PROFESSIONAL ENGINEER AND  
 LAND SURVEYOR, LIC. #13229  
 HAROLD E. PELLOW & ASSOCIATES, INC.  
 17 PLAINS ROAD, AUGUSTA, NEW JERSEY  
\* TO SHOW CONDITIONS AS OF JUNE 2006

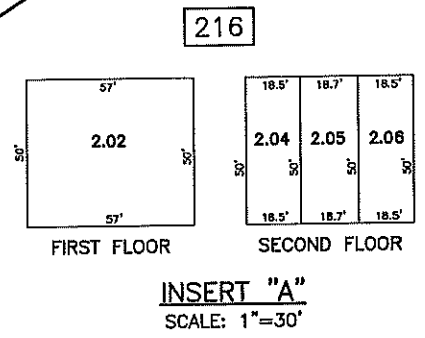
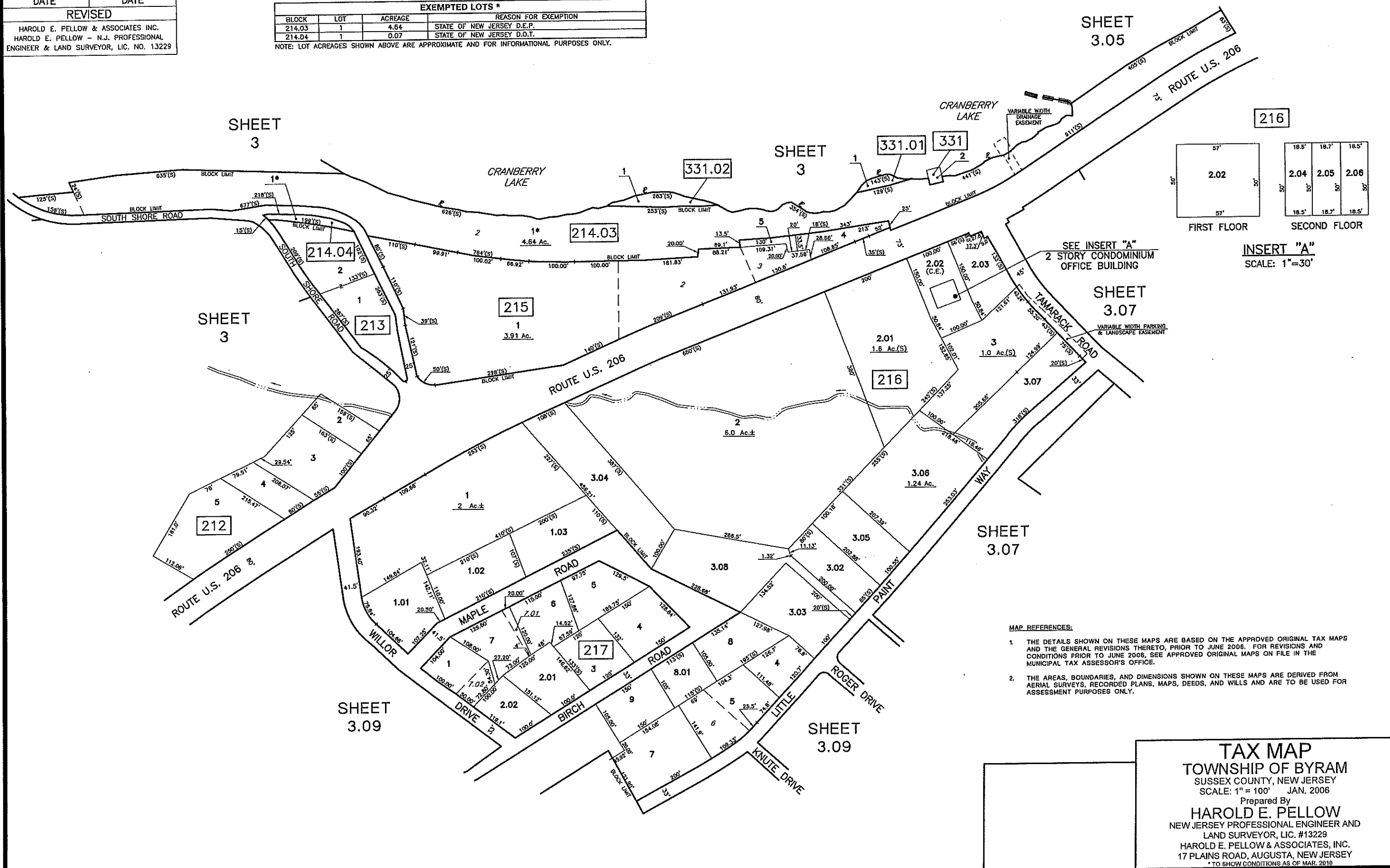




DECEMBER 2018	
DECEMBER 2014	
DECEMBER 2013	
MARCH 2010	
DATE	DATE
REVISED	
HAROLD E. PELLOW & ASSOCIATES INC.	
HAROLD E. PELLOW - N.J. PROFESSIONAL	
ENGINEER & LAND SURVEYOR, LIC. NO. 13229	

EXEMPTED LOTS *			
BLOCK	LOT	ACREAGE	REASON FOR EXEMPTION
214.03	1	4.64	STATE OF NEW JERSEY D.E.P.
214.04	1	0.07	STATE OF NEW JERSEY D.O.T.

NOTE: LOT ACREAGES SHOWN ABOVE ARE APPROXIMATE AND FOR INFORMATIONAL PURPOSES ONLY.



- MAP REFERENCES:
1. THE DETAILS SHOWN ON THESE MAPS ARE BASED ON THE APPROVED ORIGINAL TAX MAPS AND THE GENERAL REVISIONS THERETO, PRIOR TO JUNE 2006. FOR REVISIONS AND CONDITIONS PRIOR TO JUNE 2006, SEE APPROVED ORIGINAL MAPS ON FILE IN THE MUNICIPAL TAX ASSESSOR'S OFFICE.
  2. THE AREAS, BOUNDARIES, AND DIMENSIONS SHOWN ON THESE MAPS ARE DERIVED FROM AERIAL SURVEYS, RECORDED PLANS, MAPS, DEEDS, AND WILLS AND ARE TO BE USED FOR ASSESSMENT PURPOSES ONLY.

**TAX MAP**  
**TOWNSHIP OF BYRAM**  
 SUSSEX COUNTY, NEW JERSEY  
 SCALE: 1" = 100' JAN. 2006  
 Prepared By  
**HAROLD E. PELLOW**  
 NEW JERSEY PROFESSIONAL ENGINEER AND  
 LAND SURVEYOR, LIC. #13229  
 HAROLD E. PELLOW & ASSOCIATES, INC.  
 17 PLAINS ROAD, AUGUSTA, NEW JERSEY  
 \* TO SHOW CONDITIONS AS OF MAR. 2010

