

MAP REFERENCES:

1. THE DETAILS SHOWN ON THESE MAPS ARE BASED ON THE APPROVED ORIGINAL TAX MAPS AND THE GENERAL REVISIONS THEREOF, PRIOR TO JUNE 2006. FOR REVISIONS AND CONDITIONS PRIOR TO JUNE 2006, SEE APPROVED ORIGINAL MAPS ON FILE IN THE MUNICIPAL TAX ASSESSOR'S OFFICE.
2. THE AREAS, BOUNDARIES, AND DIMENSIONS SHOWN ON THESE MAPS ARE DERIVED FROM AERIAL SURVEYS, RECORDED PLANS, MAPS, DEEDS, AND WILLS AND ARE TO BE USED FOR ASSESSMENT PURPOSES ONLY.

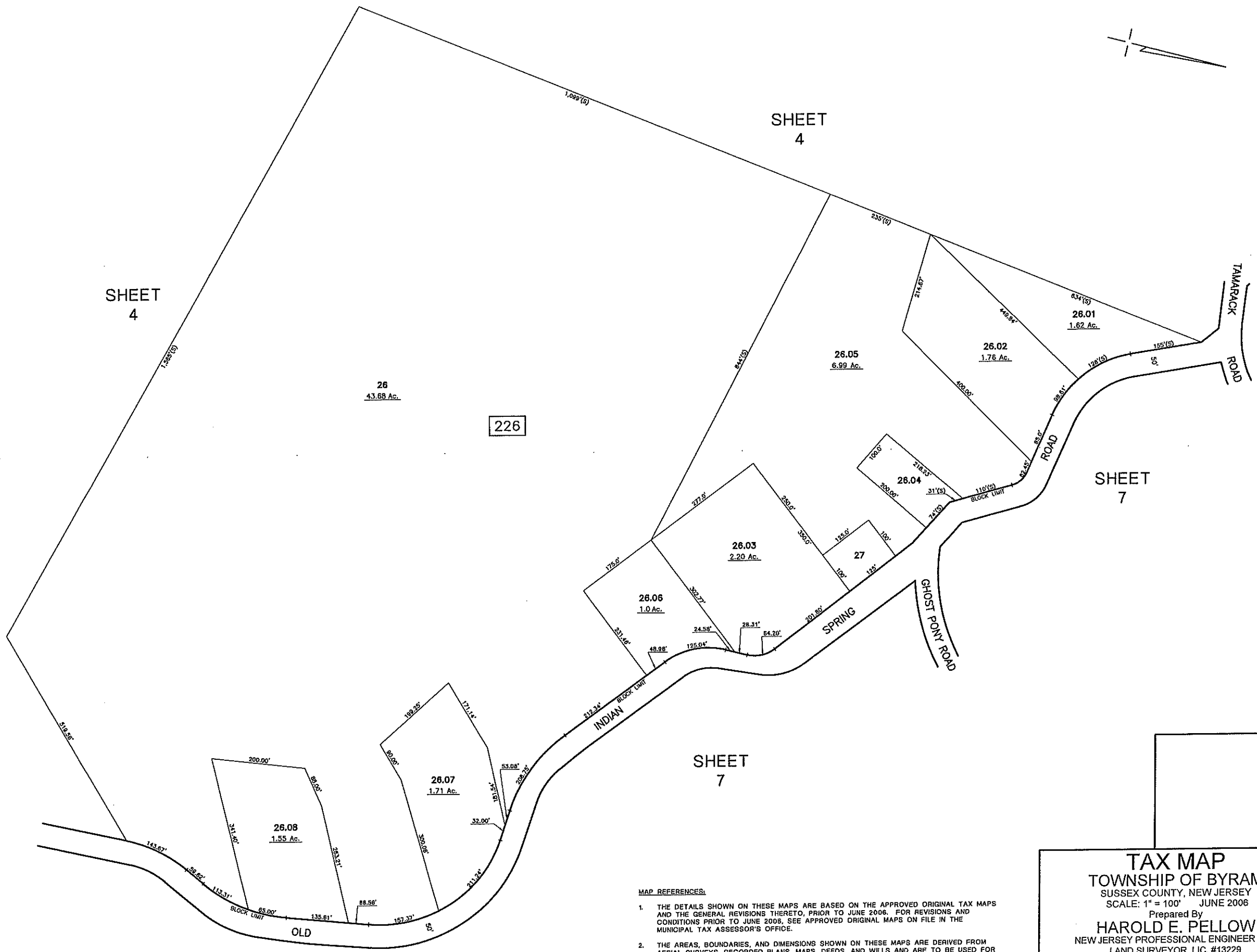
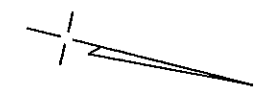
\*\*THE OVERLAPPING LINES AND DIMENSIONS SHOWN ARE PLOTTED IN ACCORDANCE WITH THE METES AND BOUNDS DESCRIPTIONS APPEARING IN THE LAST DEED OF RECORD FOR EACH PARCEL & DO NOT PURPORT TO REPRESENT TITLE OR OWNERSHIP STATUS IN ANY MANNER. THESE SITUATIONS ARE SUBJECT TO SOLUTION BY THE PROPERTY OWNERS CONCERNED.

DECEMBER 2013	
MARCH 2010	
OCTOBER 2009	
DATE	DATE
REVISED	
HAROLD E. PELLOW & ASSOCIATES INC.	
HAROLD E. PELLOW - N.J. PROFESSIONAL ENGINEER & LAND SURVEYOR, LIC. NO. 13229	

BLOCK	LOT	ACREAGE	REASON FOR EXEMPTION
226	25.02	53.97	TOWNSHIP OF BYRAM
366	3	225.46 (TOTAL)	STATE OF NEW JERSEY D.E.P.
366	4	0.2	STATE OF NEW JERSEY D.E.P.
366	8	22.17	STATE OF NEW JERSEY D.E.P.
366	10	25.43	STATE OF NEW JERSEY D.E.P.
366	11	54.13	STATE OF NEW JERSEY D.E.P.
366	11.01	37.32	STATE OF NEW JERSEY D.E.P.
366	11.03	17.31	STATE OF NEW JERSEY D.E.P.
366	12.01	16.06	STATE OF NEW JERSEY D.E.P.

NOTE: LOT ACREAGES SHOWN ABOVE ARE APPROXIMATE AND FOR INFORMATIONAL PURPOSES ONLY.

**TAX MAP**  
 TOWNSHIP OF BYRAM  
 SUSSEX COUNTY, NEW JERSEY  
 SCALE: 1" = 400' JUNE 2006  
 Prepared By  
**HAROLD E. PELLOW**  
 NEW JERSEY PROFESSIONAL ENGINEER AND  
 LAND SURVEYOR, LIC. #13229  
 HAROLD E. PELLOW & ASSOCIATES, INC.  
 17 PLAINS ROAD, AUGUSTA, NEW JERSEY  
 \*TO SHOW CONDITIONS AS OF MAR. 2010



- MAP REFERENCES:
1. THE DETAILS SHOWN ON THESE MAPS ARE BASED ON THE APPROVED ORIGINAL TAX MAPS AND THE GENERAL REVISIONS THERETO, PRIOR TO JUNE 2006. FOR REVISIONS AND CONDITIONS PRIOR TO JUNE 2006, SEE APPROVED ORIGINAL MAPS ON FILE IN THE MUNICIPAL TAX ASSESSOR'S OFFICE.
  2. THE AREAS, BOUNDARIES, AND DIMENSIONS SHOWN ON THESE MAPS ARE DERIVED FROM AERIAL SURVEYS, RECORDED PLANS, MAPS, DEEDS, AND WILLS AND ARE TO BE USED FOR ASSESSMENT PURPOSES ONLY.

**TAX MAP**  
**TOWNSHIP OF BYRAM**  
 SUSSEX COUNTY, NEW JERSEY  
 SCALE: 1" = 100' JUNE 2006  
 Prepared By  
**HAROLD E. PELLOW**  
 NEW JERSEY PROFESSIONAL ENGINEER AND  
 LAND SURVEYOR, LIC. #13229  
 HAROLD E. PELLOW & ASSOCIATES, INC.  
 17 PLAINS ROAD, AUGUSTA, NEW JERSEY  
 \* TO SHOW CONDITIONS AS OF JUNE 2006