

DATE	DATE
AUGUST 2011	
MARCH 2010	
JULY 2009	
REVISED	
HAROLD E. PELLOW & ASSOCIATES INC. HAROLD E. PELLOW - N.J. PROFESSIONAL ENGINEER & LAND SURVEYOR, LIC. NO. 13229	

BLOCK	LOT	ACREAGE	REASON FOR EXEMPTION
335	1.04	4.08	TOWNSHIP OF BYRAM
335	2	44.622	TOWNSHIP OF BYRAM
336	43	44	TOWNSHIP OF BYRAM

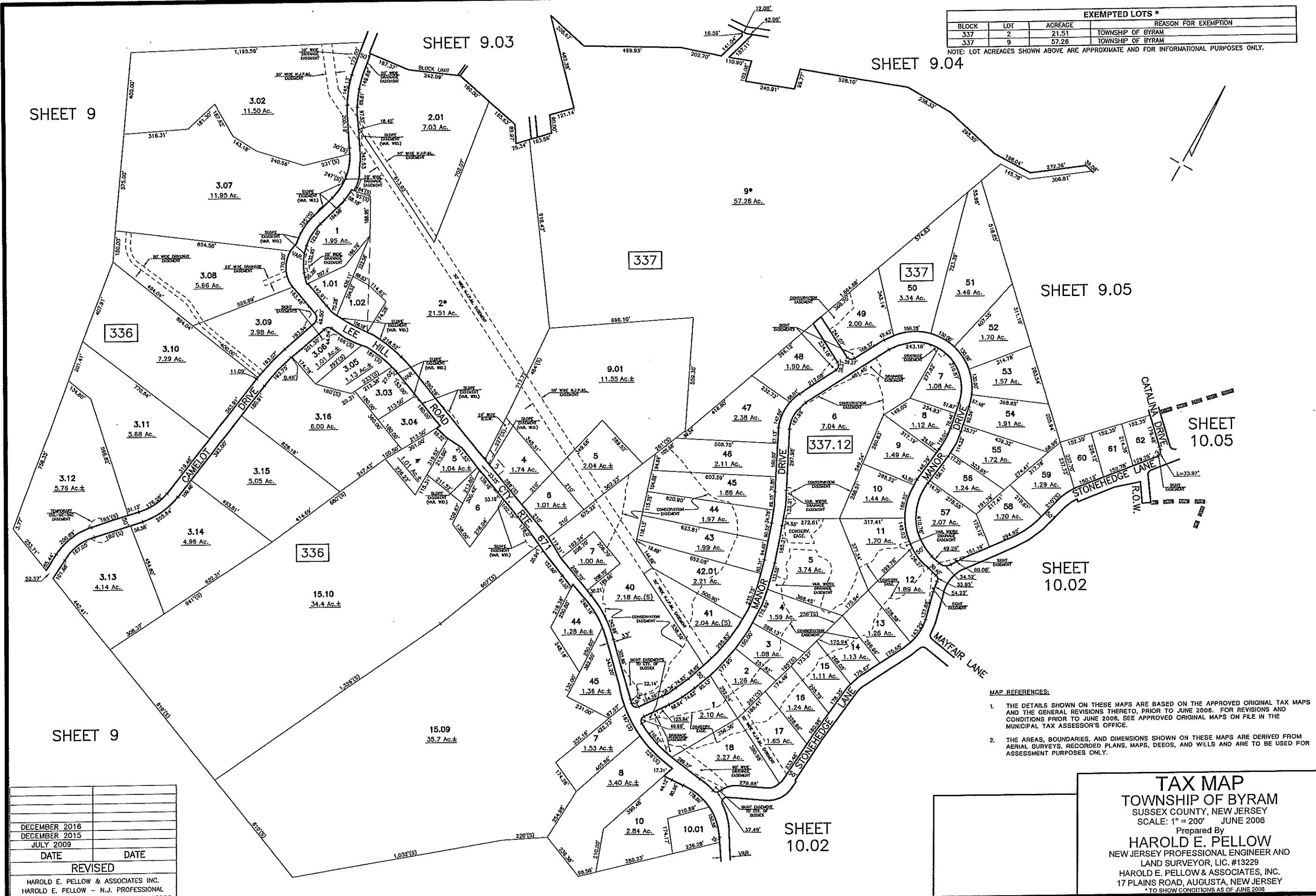
NOTE: LOT ACREAGES SHOWN ABOVE ARE APPROXIMATE AND FOR INFORMATIONAL PURPOSES ONLY.

TAX MAP
TOWNSHIP OF BYRAM
 SUSSEX COUNTY, NEW JERSEY
 SCALE: 1" = 400' JUNE 2006
 Prepared By
HAROLD E. PELLOW
 NEW JERSEY PROFESSIONAL ENGINEER AND
 LAND SURVEYOR, LIC. #13229
 HAROLD E. PELLOW & ASSOCIATES, INC.
 17 PLAINS ROAD, AUGUSTA, NEW JERSEY
 *TO SHOW CONDITIONS AS OF AUG. 2011

- MAP REFERENCES:
- THE DETAILS SHOWN ON THESE MAPS ARE BASED ON THE APPROVED ORIGINAL TAX MAPS AND THE GENERAL REVISIONS THERETO, PRIOR TO JUNE 2006. FOR REVISIONS AND CONDITIONS PRIOR TO JUNE 2006, SEE APPROVED ORIGINAL MAPS ON FILE IN THE MUNICIPAL TAX ASSESSOR'S OFFICE.
 - THE AREAS, BOUNDARIES, AND DIMENSIONS SHOWN ON THESE MAPS ARE DERIVED FROM AERIAL SURVEYS, RECORDED PLANS, MAPS, DEEDS, AND WILLS AND ARE TO BE USED FOR ASSESSMENT PURPOSES ONLY.

EXEMPTED LOTS *			
BLOCK	LOT	ACREAGE	REASON FOR EXEMPTION
337	2	21.51	TOWNSHIP OF BYRAM
337	9	57.26	TOWNSHIP OF BYRAM

NOTE: LOT ACREAGES SHOWN ABOVE ARE APPROXIMATE AND FOR INFORMATIONAL PURPOSES ONLY.



MAP REFERENCES:

- THE DETAILS SHOWN ON THESE MAPS ARE BASED ON THE APPROVED ORIGINAL TAX MAPS AND THE GENERAL REVISIONS THERETO, PRIOR TO JUNE 2006. FOR REVISIONS AND CONDITIONS PRIOR TO JUNE 2006, SEE APPROVED ORIGINAL MAPS ON FILE IN THE MUNICIPAL TAX ASSESSOR'S OFFICE.
- THE AREAS, BOUNDARIES, AND DIMENSIONS SHOWN ON THESE MAPS ARE DERIVED FROM AERIAL SURVEYS, RECORDED PLANS, MAPS, DEEDS, AND WILLS AND ARE TO BE USED FOR ASSESSMENT PURPOSES ONLY.

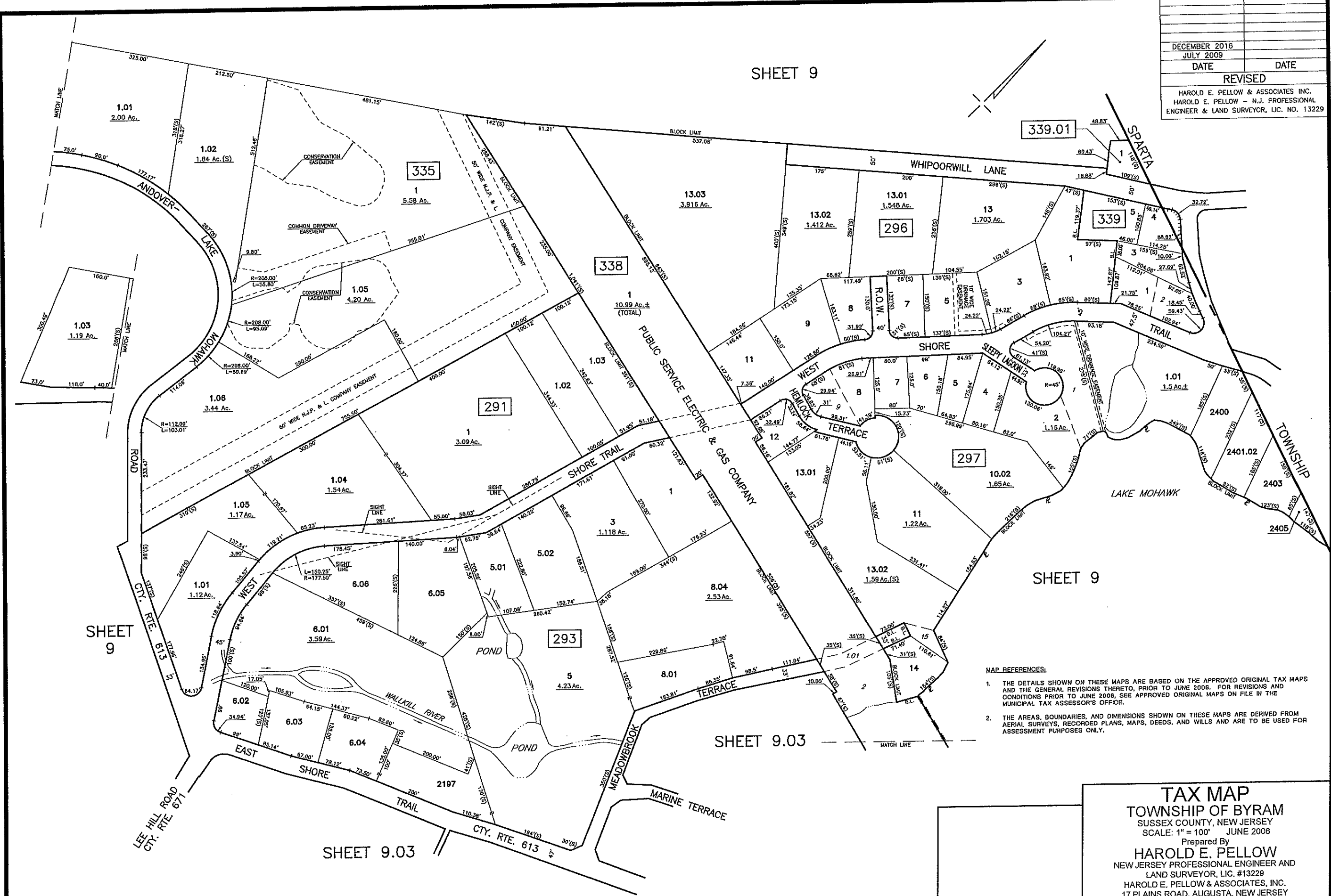
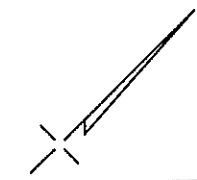
DATE	DATE
DECEMBER 2016	
DECEMBER 2015	
JULY 2009	
REVISED	

HAROLD E. PELLOW & ASSOCIATES INC.
 HAROLD E. PELLOW - N.J. PROFESSIONAL
 ENGINEER & LAND SURVEYOR, LIC. NO. 13229

TAX MAP
 TOWNSHIP OF BYRAM
 SUSSEX COUNTY, NEW JERSEY
 SCALE: 1" = 200' JUNE 2006
 Prepared By
HAROLD E. PELLOW
 NEW JERSEY PROFESSIONAL ENGINEER AND
 LAND SURVEYOR, LIC. #13229
 HAROLD E. PELLOW & ASSOCIATES, INC.
 17 PLAINS ROAD, AUGUSTA, NEW JERSEY
 * TO SHOW CONDITIONS AS OF JUNE 2006

SHEET 9

DECEMBER 2016	DATE
JULY 2009	DATE
DATE	DATE
REVISED	
HAROLD E. PELLOW & ASSOCIATES INC. HAROLD E. PELLOW - N.J. PROFESSIONAL ENGINEER & LAND SURVEYOR, LIC. NO. 13229	



SHEET 9

SHEET 9

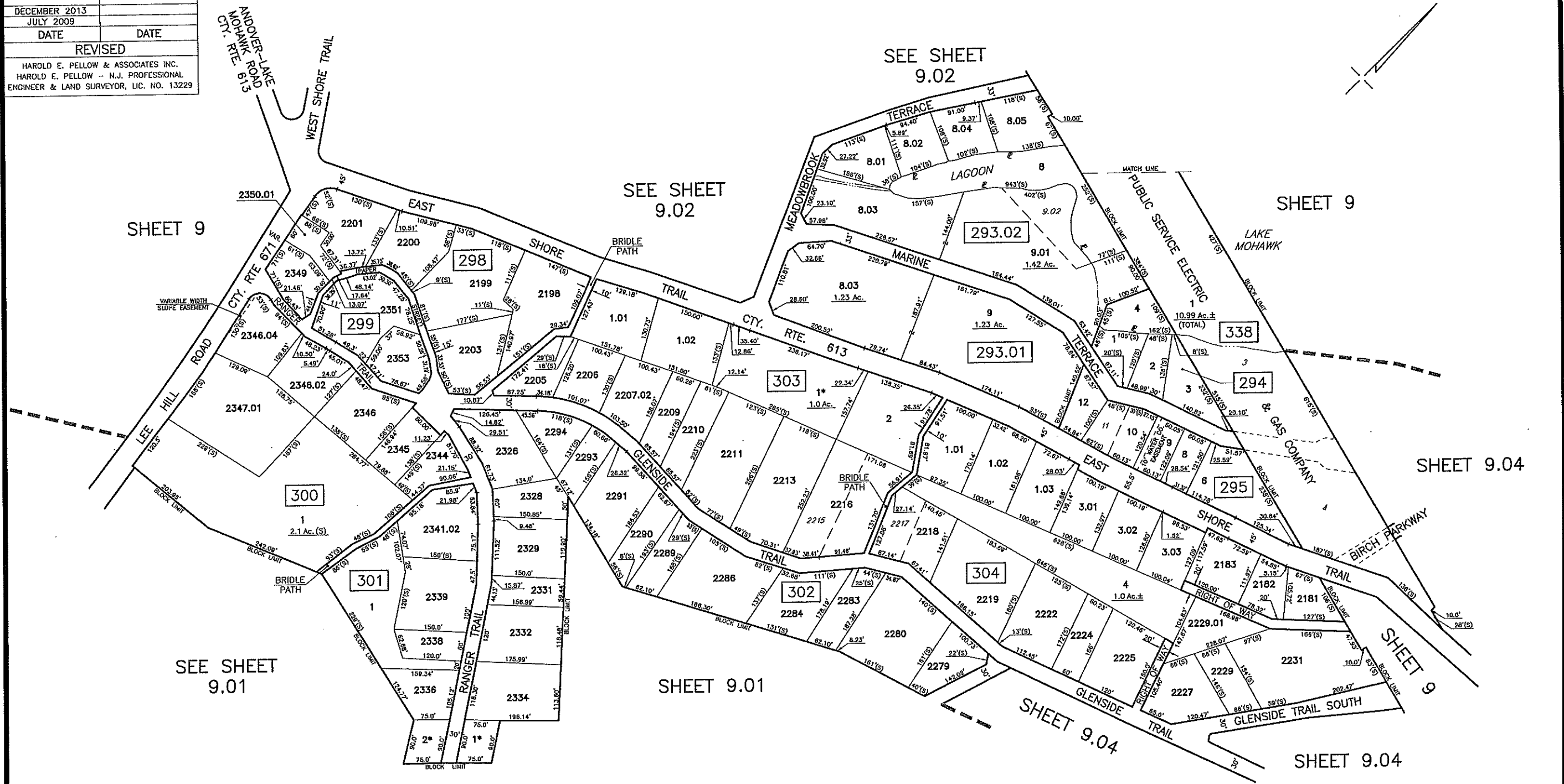
SHEET 9.03

SHEET 9.03

- MAP REFERENCES:
- THE DETAILS SHOWN ON THESE MAPS ARE BASED ON THE APPROVED ORIGINAL TAX MAPS AND THE GENERAL REVISIONS THERETO, PRIOR TO JUNE 2006. FOR REVISIONS AND CONDITIONS PRIOR TO JUNE 2006, SEE APPROVED ORIGINAL MAPS ON FILE IN THE MUNICIPAL TAX ASSESSOR'S OFFICE.
 - THE AREAS, BOUNDARIES, AND DIMENSIONS SHOWN ON THESE MAPS ARE DERIVED FROM AERIAL SURVEYS, RECORDED PLANS, MAPS, DEEDS, AND WILLS AND ARE TO BE USED FOR ASSESSMENT PURPOSES ONLY.

TAX MAP
TOWNSHIP OF BYRAM
 SUSSEX COUNTY, NEW JERSEY
 SCALE: 1" = 100' JUNE 2006
 Prepared By
HAROLD E. PELLOW
 NEW JERSEY PROFESSIONAL ENGINEER AND
 LAND SURVEYOR, LIC. #13229
 HAROLD E. PELLOW & ASSOCIATES, INC.
 17 PLAINS ROAD, AUGUSTA, NEW JERSEY
 * TO SHOW CONDITIONS AS OF JULY 2009

DECEMBER 2013	DATE
JULY 2009	DATE
REVISED	
HAROLD E. PELLOW & ASSOCIATES INC. HAROLD E. PELLOW - N.J. PROFESSIONAL ENGINEER & LAND SURVEYOR, LIC. NO. 13229	



EXEMPTED LOTS *			
BLOCK	LOT	ACREAGE	REASON FOR EXEMPTION
301	2	0.160	TOWNSHIP OF SPARTA
302	1	0.160	TOWNSHIP OF SPARTA
303	1	1.00	TOWNSHIP OF SPARTA

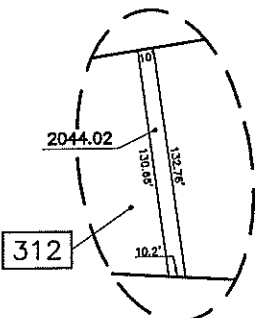
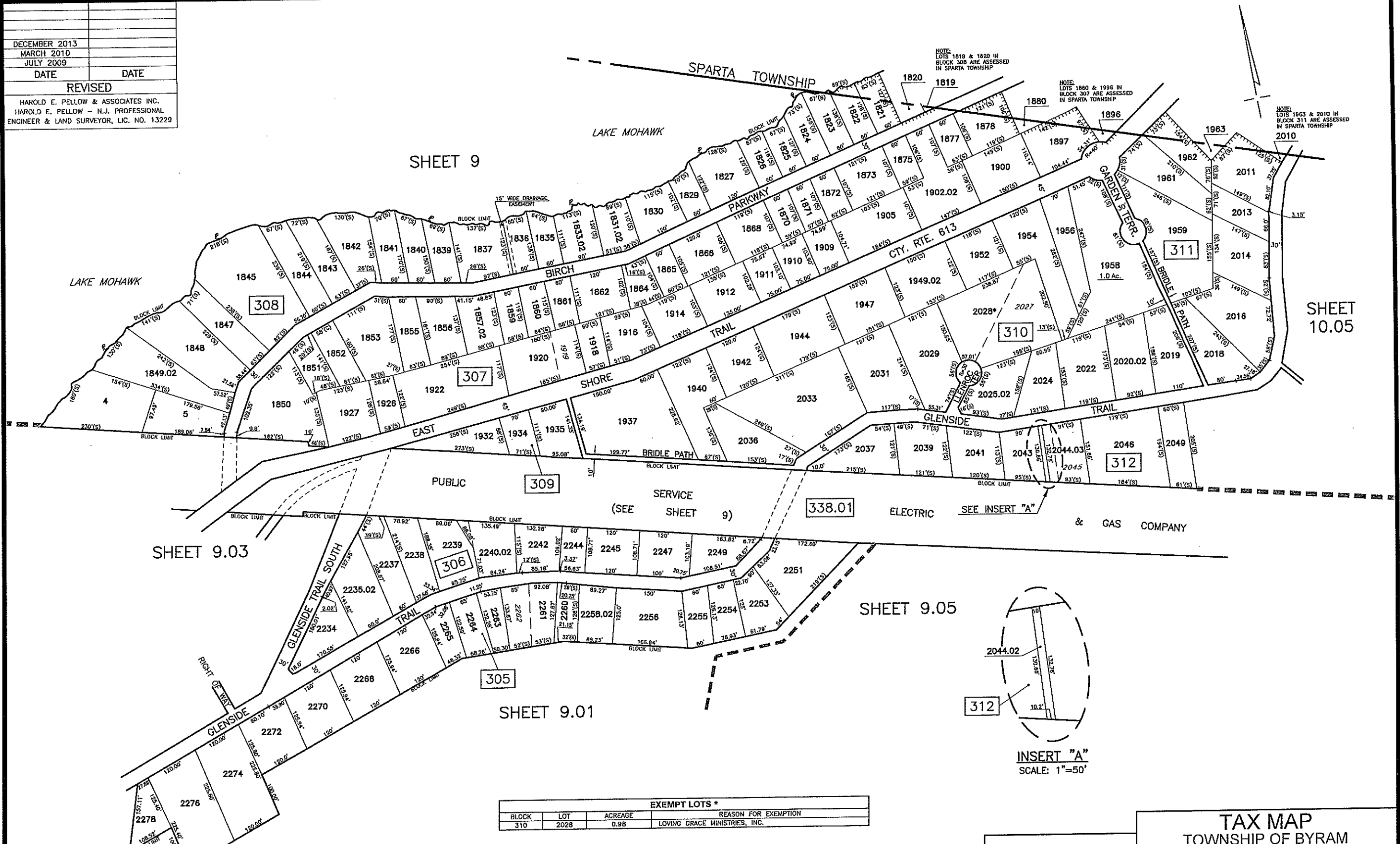
NOTE: LOT ACREAGES SHOWN ABOVE ARE APPROXIMATE AND FOR INFORMATIONAL PURPOSES ONLY.

MAP REFERENCES:

- THE DETAILS SHOWN ON THESE MAPS ARE BASED ON THE APPROVED ORIGINAL TAX MAPS AND THE GENERAL REVISIONS THERETO, PRIOR TO JUNE 2006. FOR REVISIONS AND CONDITIONS PRIOR TO JUNE 2006, SEE APPROVED ORIGINAL MAPS ON FILE IN THE MUNICIPAL TAX ASSESSOR'S OFFICE.
- THE AREAS, BOUNDARIES, AND DIMENSIONS SHOWN ON THESE MAPS ARE DERIVED FROM AERIAL SURVEYS, RECORDED PLANS, MAPS, DEEDS, AND WILLS AND ARE TO BE USED FOR ASSESSMENT PURPOSES ONLY.

TAX MAP
TOWNSHIP OF BYRAM
 SUSSEX COUNTY, NEW JERSEY
 SCALE: 1" = 100' JUNE 2006
 Prepared By
HAROLD E. PELLOW
 NEW JERSEY PROFESSIONAL ENGINEER AND
 LAND SURVEYOR, LIC. #13229
 HAROLD E. PELLOW & ASSOCIATES, INC.
 17 PLAINS ROAD, AUGUSTA, NEW JERSEY
 * TO SHOW CONDITIONS AS OF JUNE 2006

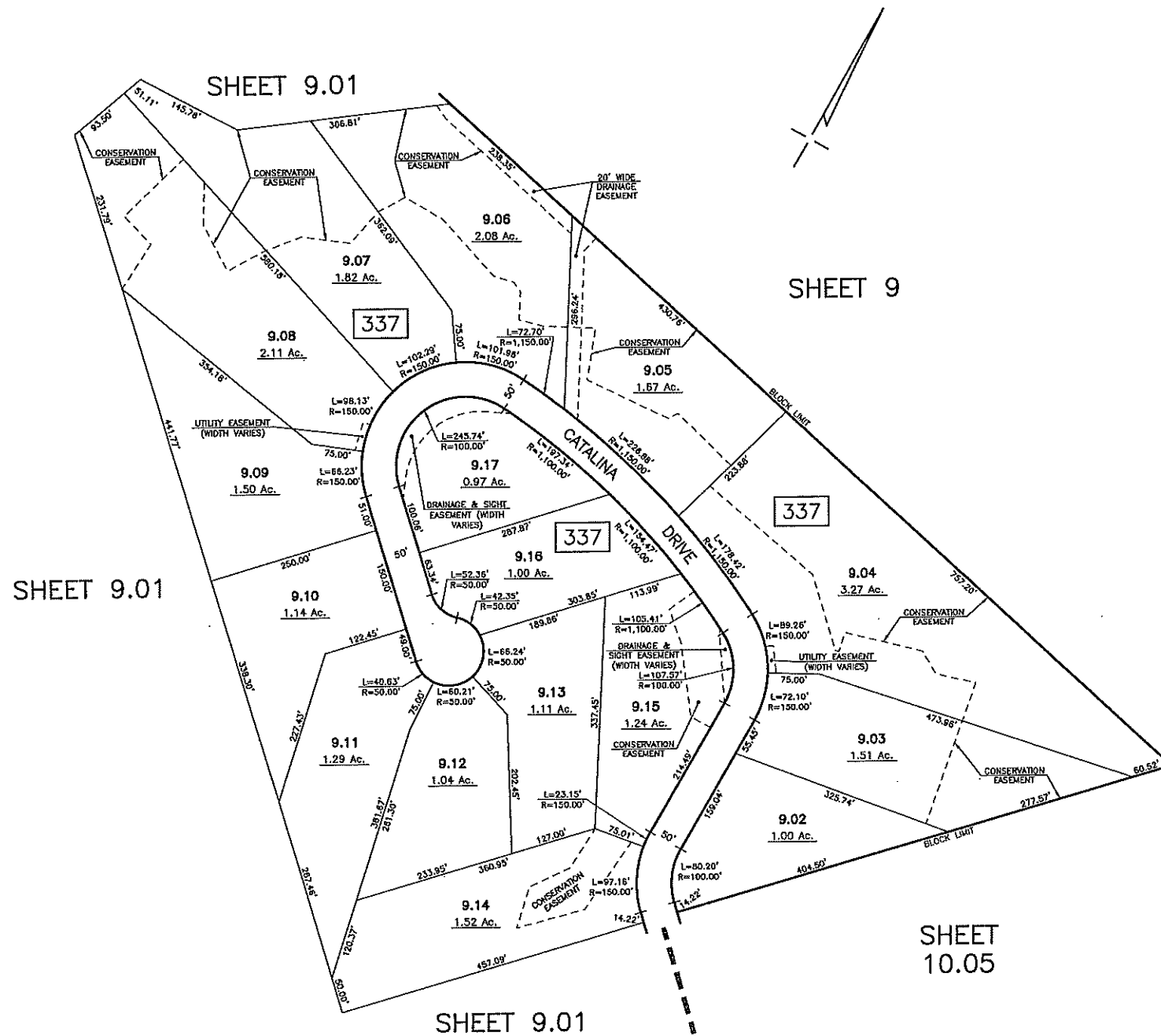
DECEMBER 2013	
MARCH 2010	
JULY 2009	
DATE	DATE
REVISED	
HAROLD E. PELLOW & ASSOCIATES INC.	
HAROLD E. PELLOW - N.J. PROFESSIONAL ENGINEER & LAND SURVEYOR, LIC. NO. 13229	



EXEMPT LOTS *			
BLOCK	LOT	ACREAGE	REASON FOR EXEMPTION
310	2028	0.98	LOVING GRACE MINISTRIES, INC.

- MAP REFERENCES:
1. THE DETAILS SHOWN ON THESE MAPS ARE BASED ON THE APPROVED ORIGINAL TAX MAPS AND THE GENERAL REVISIONS THERETO, PRIOR TO JUNE 2006. FOR REVISIONS AND CONDITIONS PRIOR TO JUNE 2006, SEE APPROVED ORIGINAL MAPS ON FILE IN THE MUNICIPAL TAX ASSESSOR'S OFFICE.
 2. THE AREAS, BOUNDARIES, AND DIMENSIONS SHOWN ON THESE MAPS ARE DERIVED FROM AERIAL SURVEYS, RECORDED PLANS, MAPS, DEEDS, AND WILLS AND ARE TO BE USED FOR ASSESSMENT PURPOSES ONLY.

TAX MAP
TOWNSHIP OF BYRAM
 SUSSEX COUNTY, NEW JERSEY
 SCALE: 1" = 100' JUNE 2006
 Prepared By
HAROLD E. PELLOW
 NEW JERSEY PROFESSIONAL ENGINEER AND
 LAND SURVEYOR, LIC. #13229
 HAROLD E. PELLOW & ASSOCIATES, INC.
 17 PLAINS ROAD, AUGUSTA, NEW JERSEY
 * TO SHOW CONDITIONS AS OF JUNE 2006



MAP REFERENCES:

1. THE DETAILS SHOWN ON THESE MAPS ARE BASED ON THE APPROVED ORIGINAL TAX MAPS AND THE GENERAL REVISIONS THERETO, PRIOR TO JUNE 2006. FOR REVISIONS AND CONDITIONS PRIOR TO JUNE 2006, SEE APPROVED ORIGINAL MAPS ON FILE IN THE MUNICIPAL TAX ASSESSOR'S OFFICE.
2. THE AREAS, BOUNDARIES, AND DIMENSIONS SHOWN ON THESE MAPS ARE DERIVED FROM AERIAL SURVEYS, RECORDED PLANS, MAPS, DEEDS, AND WILLS AND ARE TO BE USED FOR ASSESSMENT PURPOSES ONLY.

TAX MAP
TOWNSHIP OF BYRAM
 SUSSEX COUNTY, NEW JERSEY
 SCALE: 1" = 100' JUNE 2006
 Prepared By
HAROLD E. PELLOW
 NEW JERSEY PROFESSIONAL ENGINEER AND
 LAND SURVEYOR, LIC. #13229
 HAROLD E. PELLOW & ASSOCIATES, INC.
 17 PLAINS ROAD, AUGUSTA, NEW JERSEY
* TO SHOW CONDITIONS AS OF JUNE 2006