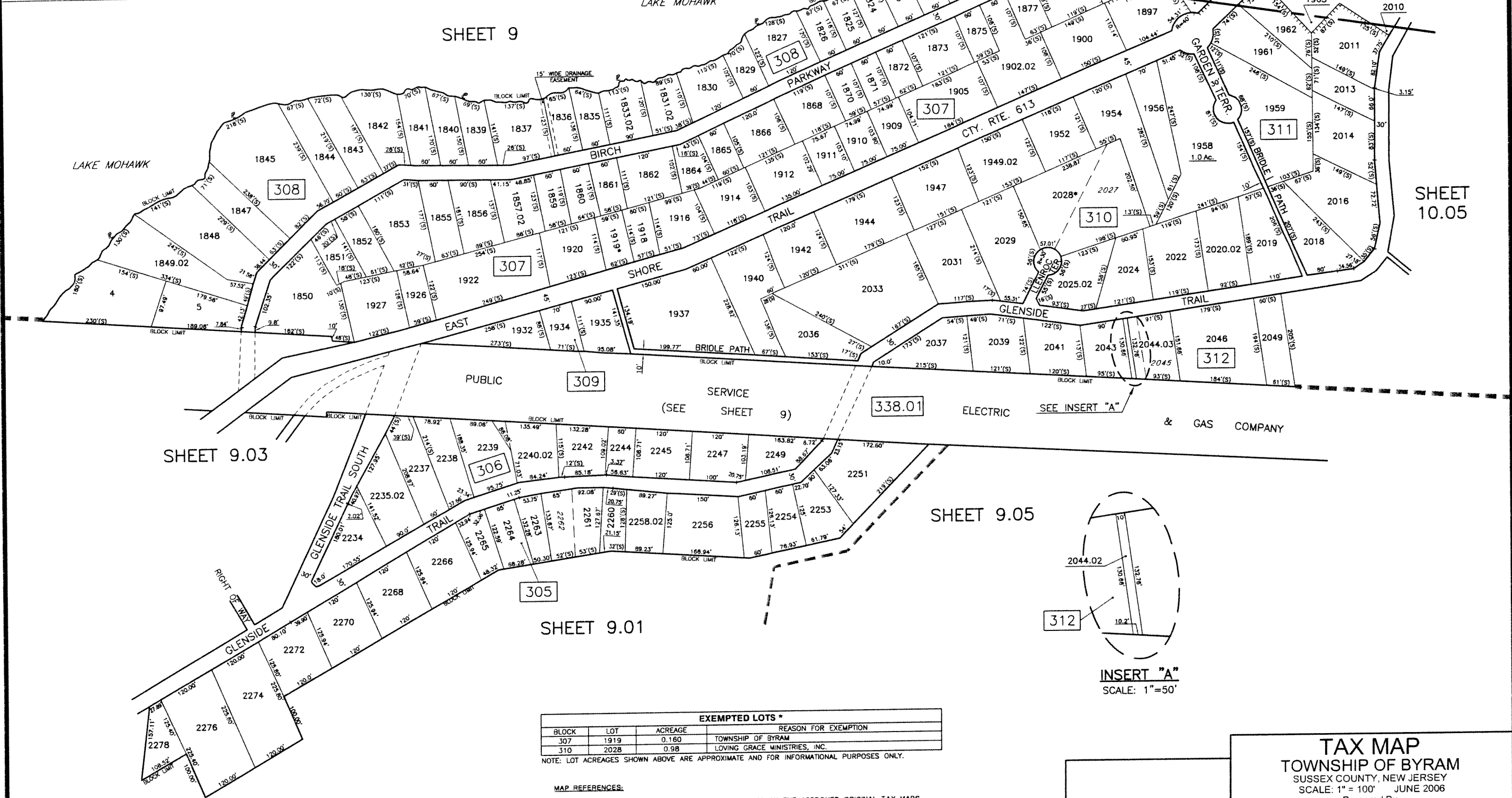


MARCH 2010	DATE
JULY 2009	DATE
REVISID	DATE
HAROLD E. PELLOW & ASSOCIATES INC. HAROLD E. PELLOW - N.J. PROFESSIONAL ENGINEER & LAND SURVEYOR, LIC. NO. 13229	



NOTE:
LOTS 1819 & 1820 IN
BLOCK 308 ARE ASSESSED
IN SPARTA TOWNSHIP

NOTE:
LOTS 1880 & 1998 IN
BLOCK 307 ARE ASSESSED
IN SPARTA TOWNSHIP

NOTE:
LOTS 1963 & 2010 IN
BLOCK 311 ARE ASSESSED
IN SPARTA TOWNSHIP

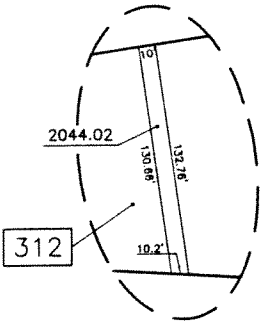
SHEET 9

SHEET 10.05

SHEET 9.03

SHEET 9.05

SHEET 9.01



INSERT "A"
SCALE: 1"=50'

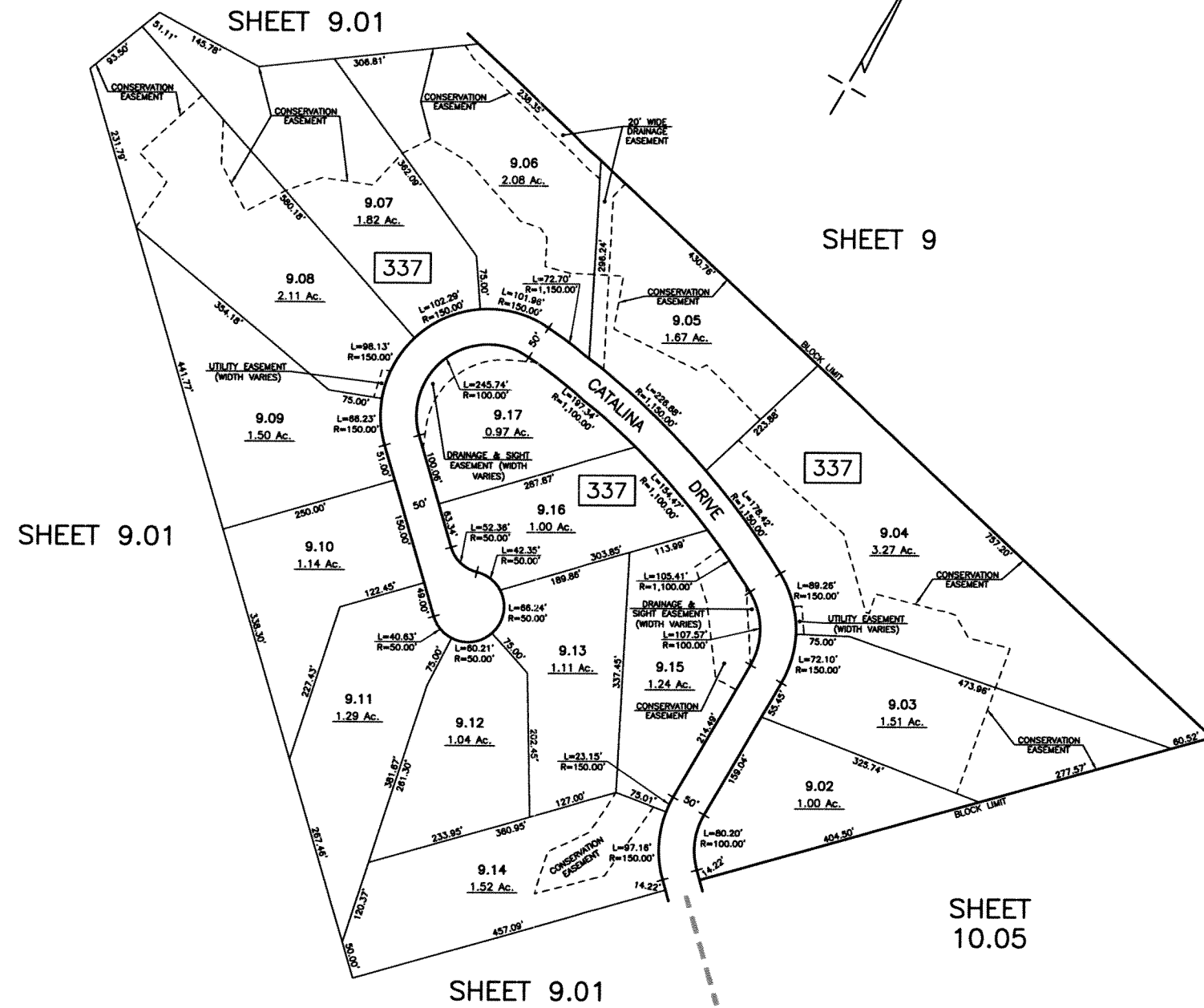
EXEMPTED LOTS *			
BLOCK	LOT	ACREAGE	REASON FOR EXEMPTION
307	1919	0.160	TOWNSHIP OF BYRAM
310	2028	0.98	LOVING GRACE MINISTRIES, INC.

NOTE: LOT ACREAGES SHOWN ABOVE ARE APPROXIMATE AND FOR INFORMATIONAL PURPOSES ONLY.

MAP REFERENCES:

- THE DETAILS SHOWN ON THESE MAPS ARE BASED ON THE APPROVED ORIGINAL TAX MAPS AND THE GENERAL REVISIONS THERETO, PRIOR TO JUNE 2008. FOR REVISIONS AND CONDITIONS PRIOR TO JUNE 2008, SEE APPROVED ORIGINAL MAPS ON FILE IN THE MUNICIPAL TAX ASSESSOR'S OFFICE.
- THE AREAS, BOUNDARIES, AND DIMENSIONS SHOWN ON THESE MAPS ARE DERIVED FROM AERIAL SURVEYS, RECORDED PLANS, MAPS, DEEDS, AND WILLS AND ARE TO BE USED FOR ASSESSMENT PURPOSES ONLY.

TAX MAP
TOWNSHIP OF BYRAM
SUSSEX COUNTY, NEW JERSEY
SCALE: 1" = 100' JUNE 2006
Prepared By
HAROLD E. PELLOW
NEW JERSEY PROFESSIONAL ENGINEER AND
LAND SURVEYOR, LIC. #13229
HAROLD E. PELLOW & ASSOCIATES, INC.
17 PLAINS ROAD, AUGUSTA, NEW JERSEY
* TO SHOW CONDITIONS AS OF MAR 2010



MAP REFERENCES:

1. THE DETAILS SHOWN ON THESE MAPS ARE BASED ON THE APPROVED ORIGINAL TAX MAPS AND THE GENERAL REVISIONS THERETO, PRIOR TO JUNE 2006. FOR REVISIONS AND CONDITIONS PRIOR TO JUNE 2006, SEE APPROVED ORIGINAL MAPS ON FILE IN THE MUNICIPAL TAX ASSESSOR'S OFFICE.
2. THE AREAS, BOUNDARIES, AND DIMENSIONS SHOWN ON THESE MAPS ARE DERIVED FROM AERIAL SURVEYS, RECORDED PLANS, MAPS, DEEDS, AND WILLS AND ARE TO BE USED FOR ASSESSMENT PURPOSES ONLY.

TAX MAP
TOWNSHIP OF BYRAM
 SUSSEX COUNTY, NEW JERSEY
 SCALE: 1" = 100' JUNE 2006
 Prepared By
HAROLD E. PELLOW
 NEW JERSEY PROFESSIONAL ENGINEER AND
 LAND SURVEYOR, LIC. #13229
 HAROLD E. PELLOW & ASSOCIATES, INC.
 17 PLAINS ROAD, AUGUSTA, NEW JERSEY
 * TO SHOW CONDITIONS AS OF JUNE 2006