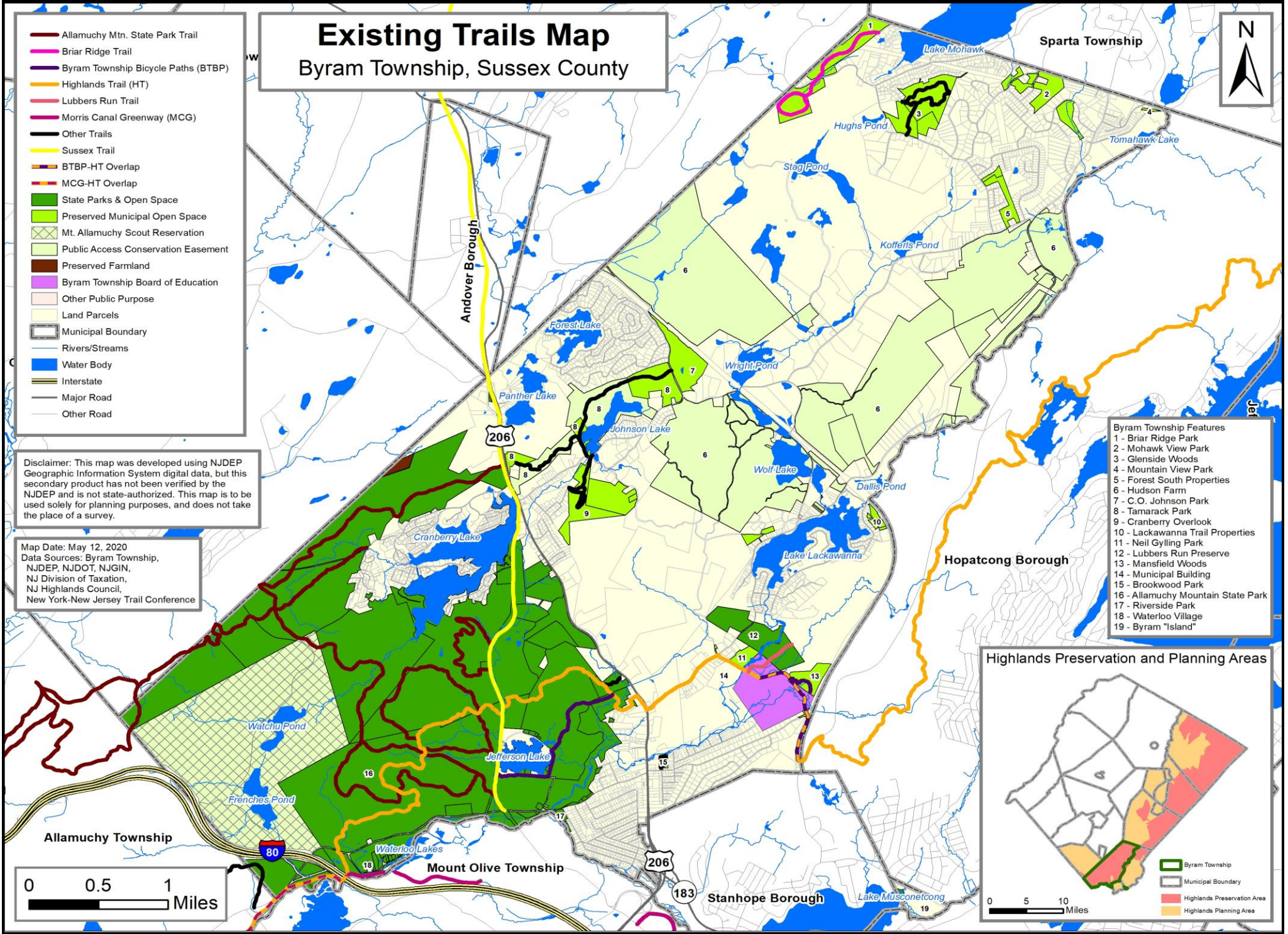
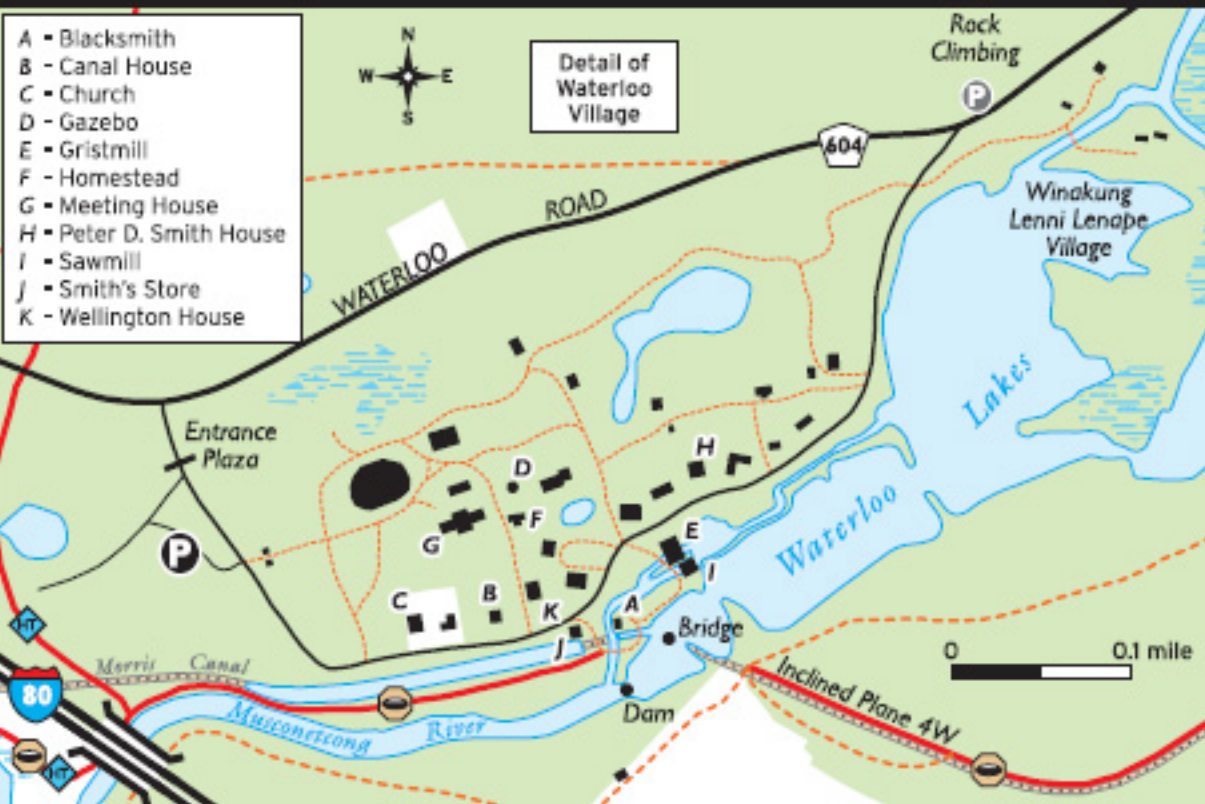


VI. Map of Existing Trails



Stephens & Allamuchy Mountain State Parks



Allamuchy Mountain Trails

- AP - Allamuchy Pond - 2.6 mi
 - BA - Barberry - 0.8 mi
 - BP - Bike Path - 1.3 mi
 - BI - Birch - 0.6 mi
 - DP - Deer Path - 6.6 mi
 - DC - Ditch/Cardiac - 2.0 mi
 - HI - Highlands* - 8.6 mi
 - IM - Iron Mine - 1.4 mi
 - LV - Lake View - 1.5 mi
 - MC - Morris Canal Gwy* - 6.7 mi
 - PE - Pebble - 3.1 mi
 - RA - Ranger - 2.6 mi
 - SS - Salt Spur - 0.2 mi
 - SB - Sussex Branch* - 2.7 mi
 - SL - Switchback Loop - 2.0 mi
 - WA - Waterloo/517 - 5.6 mi
 - WN - Waterloo North - 0.9 mi
 - WS - Waterloo South - 0.5 mi
 - WW - Waving Willie - 3.4 mi
- *trail continues outside park

Stephens Trails

- BL - Blue - 0.9 mi
 - FT - Fire Tower Loop - 0.5 mi
 - GR - Green - 1.9 mi
 - HI - Highlands* - 2.3 mi
 - ML - Maze Loop - 2.8 mi
 - OR - Orange - 1.2 mi
 - PP - Patriot's Path* - 2.3 mi
 - RE - Red - 0.9 mi
 - RW - Red/White - 0.9 mi
 - WH - White Loop - 6.6 mi
 - YE - Yellow - 0.5 mi
- *trail continues outside park



nynjtc.org



Scan QR code for an enhanced map on your mobile device!



Map adapted by the New York-New Jersey Trail Conference from *Jersey Highlands Trails*, a two-map set that includes elevation contours, is waterproof and tear-resistant, and shows more than 230 miles of trails in the Highlands of New Jersey.

Map funded in part with a national Recreational Trails Program grant in cooperation with the New Jersey State Park Service.

The Trail Conference supports parks by mobilizing thousands of outdoor-loving volunteers who create, maintain, and protect 2,000 miles of public trails. Support trails and the work of our volunteers by purchasing great trail maps, volunteering on the trails, or simply visiting nynjtc.org for more info.

© 2015 NY-NJ Trail Conference, Inc.