

AUGUST 2013	
AUGUST 2011	
MARCH 2010	
DATE	DATE
REVISED	
HAROLD E. PELLOW & ASSOCIATES INC.	
HAROLD E. PELLOW - N.J. PROFESSIONAL ENGINEER & LAND SURVEYOR, LIC. NO. 13229	

SHEET 3.06

SHEET 3.06

INSERT "A"  
SCALE: 1"=200'

INSERT "B"  
SCALE: 1"=200'

INSERT "C"  
SCALE: 1"=200'

- MAP REFERENCES:
- THE DETAILS SHOWN ON THESE MAPS ARE BASED ON THE APPROVED ORIGINAL TAX MAPS AND THE GENERAL REVISIONS THERETO, PRIOR TO JUNE 2006. FOR REVISIONS AND CONDITIONS PRIOR TO JUNE 2006, SEE APPROVED ORIGINAL MAPS ON FILE IN THE MUNICIPAL TAX ASSESSOR'S OFFICE.
  - THE AREAS, BOUNDARIES, AND DIMENSIONS SHOWN ON THESE MAPS ARE DERIVED FROM AERIAL SURVEYS, RECORDED PLANS, MAPS, DEEDS, AND WILLS AND ARE TO BE USED FOR ASSESSMENT PURPOSES ONLY.

EXEMPT LOTS *			
BLOCK	LOT	ACREAGE	REASON FOR EXEMPTION
349	1.01	1.0	STATE OF NEW JERSEY D.O.T.
351	1	55.6	TOWNSHIP OF BYRAM
351	1.01	0.37	STATE OF NEW JERSEY D.O.T.
351	7.01	0.2	STATE OF NEW JERSEY D.O.T.
360	31.12	5.74	AN EVENING WITH JESUS FELLOWSHIP
360	39.03	10.03	BYRAM TOWNSHIP
360	42.05	49.09	BYRAM TOWNSHIP

**TAX MAP**  
**TOWNSHIP OF BYRAM**  
 SUSSEX COUNTY, NEW JERSEY  
 SCALE: 1" = 400' JUNE 2006  
 Prepared By  
**HAROLD E. PELLOW**  
 NEW JERSEY PROFESSIONAL ENGINEER AND  
 LAND SURVEYOR, LIC. #13229  
 HAROLD E. PELLOW & ASSOCIATES, INC.  
 17 PLAINS ROAD, AUGUSTA, NEW JERSEY  
 \* TO SHOW CONDITIONS AS OF JUNE 2006

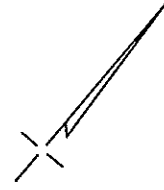








DECEMBER 2014	
AUGUST 2013	
AUGUST 2011	
MARCH 2010	
JULY 2009	
DATE	DATE
REVISED	
HAROLD E. PELLOW & ASSOCIATES INC.	
HAROLD E. PELLOW - N.J. PROFESSIONAL	
ENGINEER & LAND SURVEYOR, LIC. NO. 13229	



SHEET 7.01

SHEET 7.03

SHEET 7

SHEET 7.03

SHEET 7.06

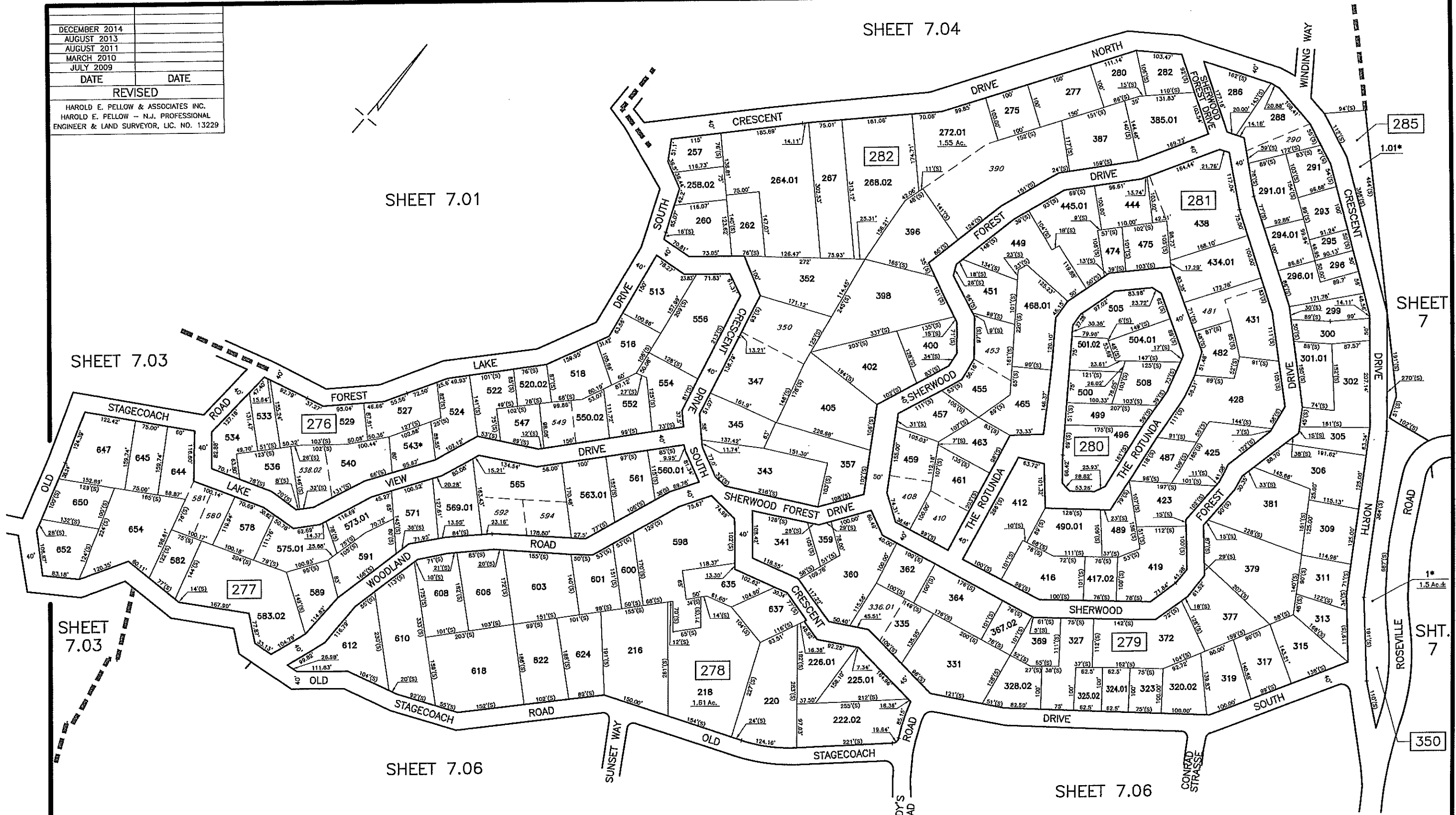
SHEET 7.06

SHT. 7

350

1\* 1.5 Ac.±

285



EXEMPT LOTS \*

BLOCK	LOT	ACREAGE	REASON FOR EXEMPTION
276	543	0.195	TOWNSHIP OF BYRAM
285	1.01	0.459	TOWNSHIP OF BYRAM
350	1	1.5	TOWNSHIP OF BYRAM

MAP REFERENCES:

1. THE DETAILS SHOWN ON THESE MAPS ARE BASED ON THE APPROVED ORIGINAL TAX MAPS AND THE GENERAL REVISIONS THERETO, PRIOR TO JUNE 2006. FOR REVISIONS AND CONDITIONS PRIOR TO JUNE 2006, SEE APPROVED ORIGINAL MAPS ON FILE IN THE MUNICIPAL TAX ASSESSOR'S OFFICE.
2. THE AREAS, BOUNDARIES, AND DIMENSIONS SHOWN ON THESE MAPS ARE DERIVED FROM AERIAL SURVEYS, RECORDED PLANS, MAPS, DEEDS, AND WILLS AND ARE TO BE USED FOR ASSESSMENT PURPOSES ONLY.

**TAX MAP**  
**TOWNSHIP OF BYRAM**  
 SUSSEX COUNTY, NEW JERSEY  
 SCALE: 1" = 100' JUNE 2006  
 Prepared By  
**HAROLD E. PELLOW**  
 NEW JERSEY PROFESSIONAL ENGINEER AND  
 LAND SURVEYOR, LIC. #13229  
 HAROLD E. PELLOW & ASSOCIATES, INC.  
 17 PLAINS ROAD, AUGUSTA, NEW JERSEY  
 \* TO SHOW CONDITIONS AS OF DEC. 2014

SHEET 7.05

SHEET 7.03

SHEET 7

SHEET 7

