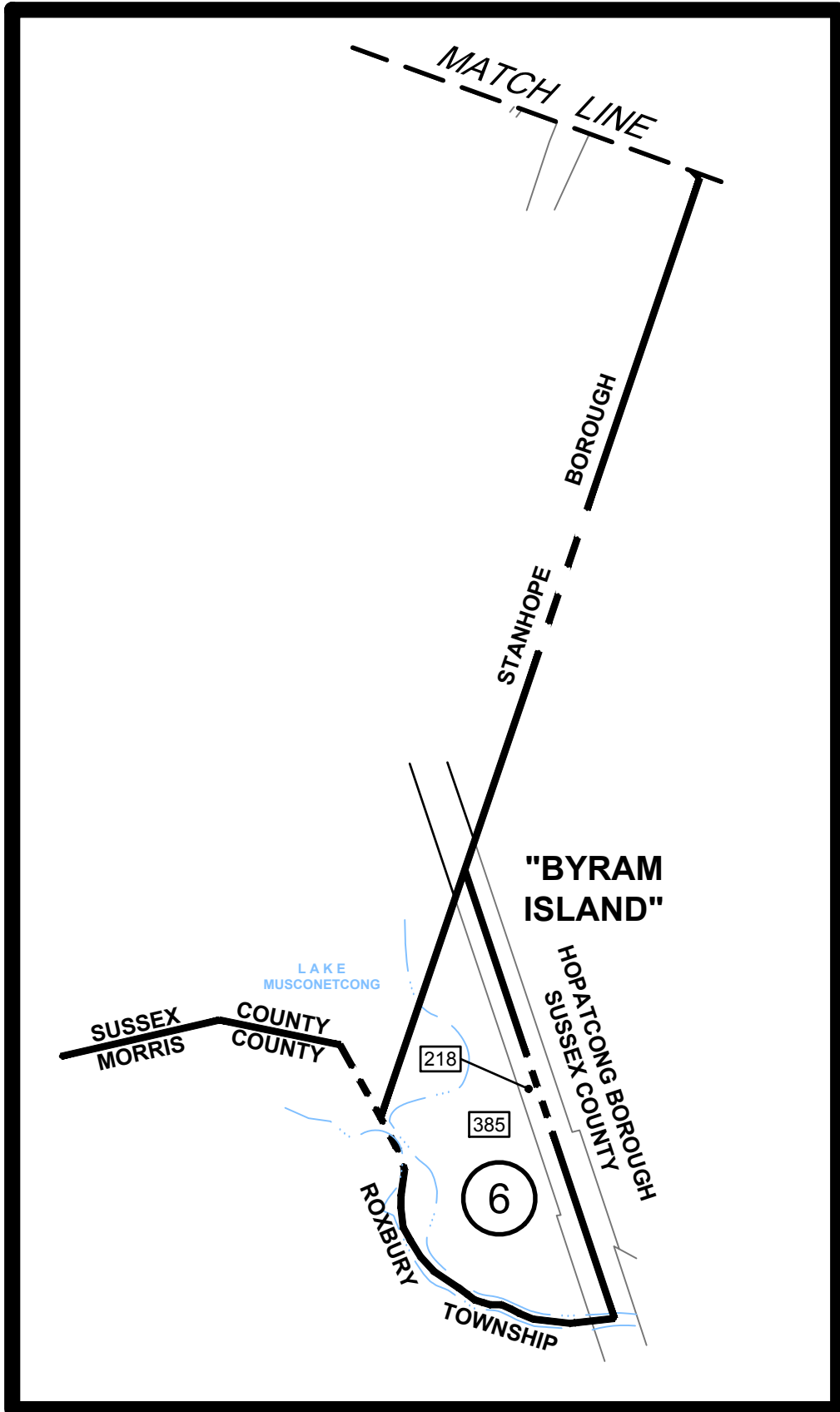


I Hereby certify that this map has been created under my immediate supervision and complies with the laws of the State of New Jersey.

HAROLD E. PELLOW, P.E. & L.S.
PROFESSIONAL ENGINEER AND LAND SURVEYOR, N.J. LIC. NO.13229

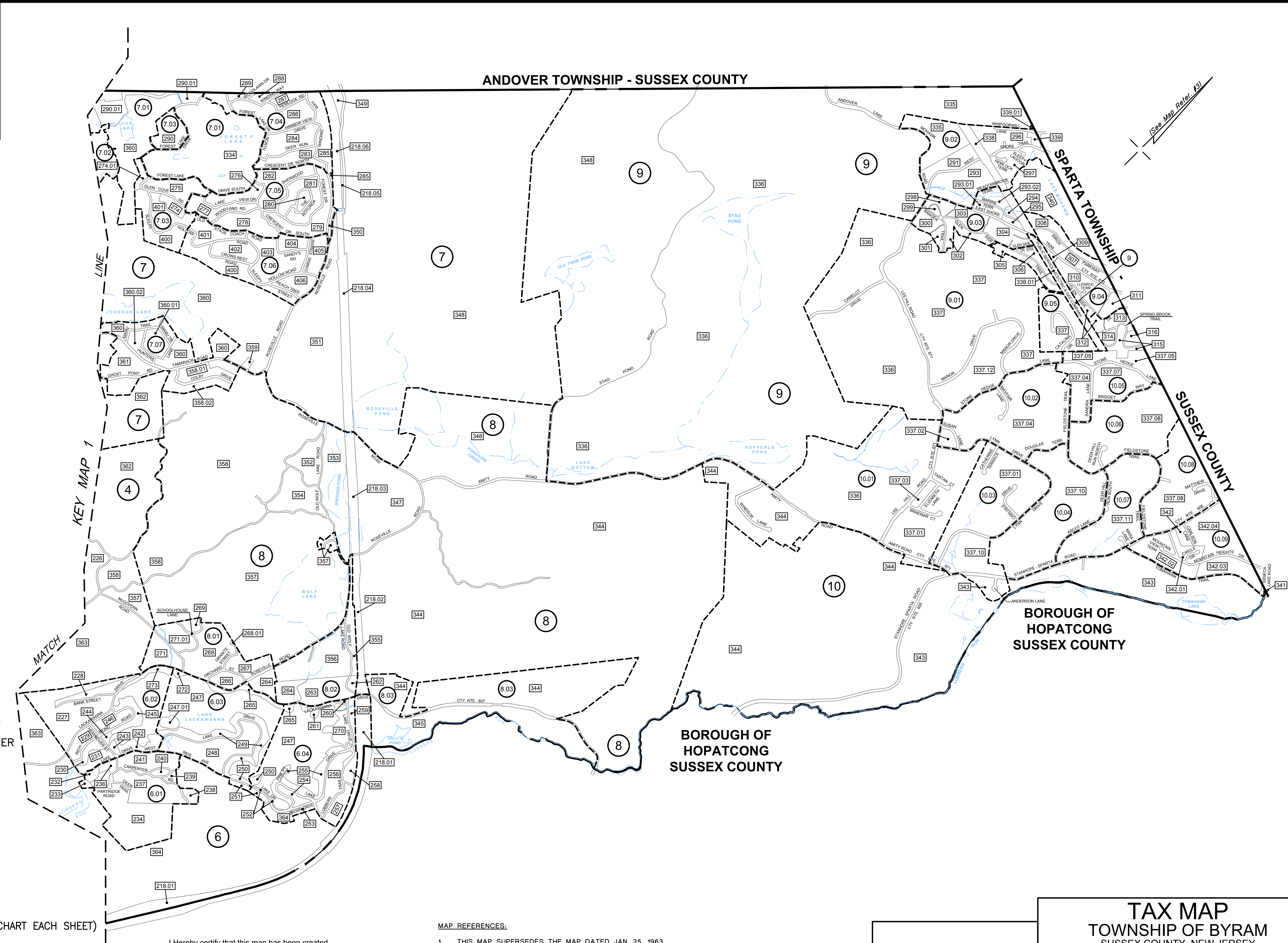
..IPDF Record Sets\2021 September\HMA-INDEX-01.jpg



- MAP REFERENCES:
1. THIS MAP SUPERSEDES THE MAP DATED JAN. 25, 1963.
 2. THE DETAILS SHOWN ON THESE MAPS ARE BASED ON THE APPROVED ORIGINAL TAX MAPS AND THE GENERAL REVISIONS THERETO, PRIOR TO JUNE 2006. FOR REVISIONS AND CONDITIONS PRIOR TO JUNE 2006, SEE APPROVED ORIGINAL MAPS ON FILE IN THE MUNICIPAL TAX ASSESSOR'S OFFICE.
 3. THE AREAS, BOUNDARIES, AND DIMENSIONS SHOWN ON THESE MAPS ARE DERIVED FROM AERIAL SURVEYS, RECORDED PLANS, MAPS, DEEDS, AND WILLS AND ARE TO BE USED FOR ASSESSMENT PURPOSES ONLY.

TAX MAP
TOWNSHIP OF BYRAM
SUSSEX COUNTY, NEW JERSEY
SCALE: 1" = 1,000' JUNE 2006
Prepared By
HAROLD E. PELLOW
NEW JERSEY PROFESSIONAL ENGINEER AND
LAND SURVEYOR, LIC. #13229
HAROLD E. PELLOW & ASSOCIATES, INC.
17 PLAINS ROAD, AUGUSTA, NEW JERSEY
TO SHOW CONDITIONS AS OF JULY 2021

AUGUST 2020	
FEBRUARY 2019	
DECEMBER 2016	
DECEMBER 2014	
DECEMBER 2013	
AUGUST 2011	FEBRUARY 2023
MARCH 2010	JULY 2021
DATE	DATE
REVISED	
HAROLD E. PELLOW & ASSOCIATES INC.	
HAROLD E. PELLOW – N.J. PROFESSIONAL	
ENGINEER & LAND SURVEYOR, LIC. NO. 13229	



LEGEND

INDEX (KEY) SHEETS

- ① DETAIL SHEET NUMBER
- 20 BLOCK NUMBER

- SHEET LIMIT
- BLOCK LIMIT (B.L.)

DETAIL SHEETS

- 20 BLOCK NUMBER
- 11 LOT NUMBER
- 1* EXEMPTED LOT (SEE CHART EACH SHEET)

- SHEET LIMIT
- BLOCK LIMIT (B.L.)
- LOT LINE
- WATERWAY AND FLOW DIRECTION

I Hereby certify that this map has been created under my immediate supervision and complies with the laws of the State of New Jersey

HAROLD E. PELLOW, P.E. & L.S.
PROFESSIONAL ENGINEER AND LAND SURVEYOR, N.J. LIC. NO.13229

..JPDF Record Sets\2021 September\HPTA\INDEX-02.jpg

MAP REFERENCES:

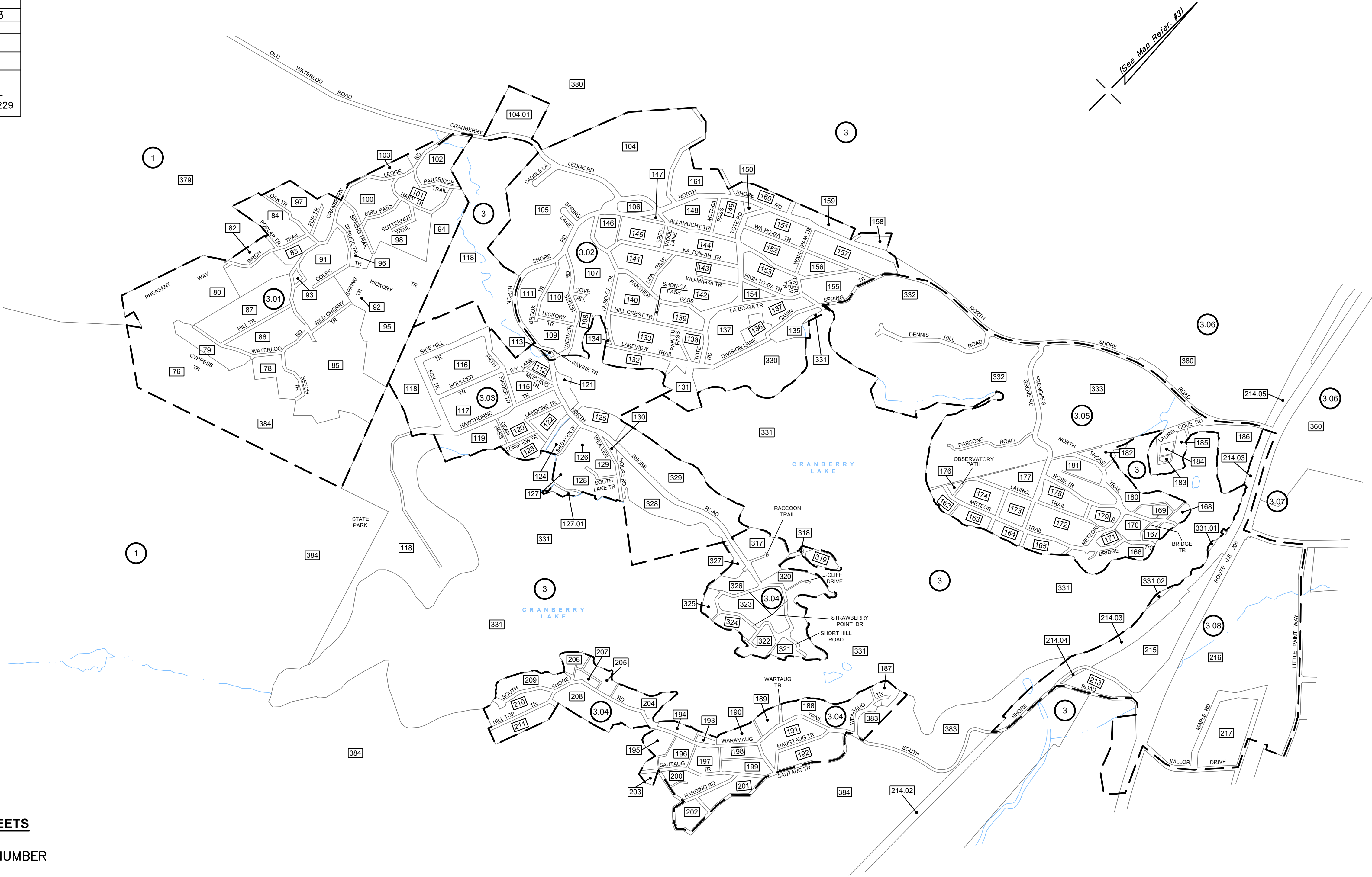
1. THIS MAP SUPERSEDES THE MAP DATED JAN. 25, 1963.
2. THE DETAILS SHOWN ON THESE MAPS ARE BASED ON THE APPROVED ORIGINAL TAX MAPS AND THE GENERAL REVISIONS THERETO, PRIOR TO JUNE 2006. FOR REVISIONS AND CONDITIONS PRIOR TO JUNE 2006, SEE APPROVED ORIGINAL MAPS ON FILE IN THE MUNICIPAL TAX ASSESSOR'S OFFICE.
3. THE AREAS, BOUNDARIES, AND DIMENSIONS SHOWN ON THESE MAPS ARE DERIVED FROM AERIAL SURVEYS, RECORDED PLANS, MAPS, DEEDS, AND WILLS AND ARE TO BE USED FOR ASSESSMENT PURPOSES ONLY.

TAX MAP
TOWNSHIP OF BYRAM

SUSSEX COUNTY, NEW JERSEY
SCALE: 1" = 1,000' JUNE 2006

Prepared By
HAROLD E. PELLOW
NEW JERSEY PROFESSIONAL ENGINEER AND
LAND SURVEYOR, LIC. #13229
HAROLD E. PELLOW & ASSOCIATES, INC.
17 PLAINS ROAD, AUGUSTA, NEW JERSEY

AUGUST 2020	
FEBRUARY 2019	
DECEMBER 2016	
DECEMBER 2015	
DECEMBER 2014	
DECEMBER 2013	FEBRUARY 2023
MARCH 2010	JULY 2021
DATE	DATE
REVISED	
HAROLD E. PELLOW & ASSOCIATES INC.	
HAROLD E. PELLOW – N.J. PROFESSIONAL	
ENGINEER & LAND SURVEYOR, LIC. NO. 13229	



LEGEND

INDEX (KEY) SHEETS

- 1 DETAIL SHEET NUMBER
- 20 BLOCK NUMBER

- SHEET LIMIT
- BLOCK LIMIT (B.L.)

DETAIL SHEETS

- 20 BLOCK NUMBER
- 11 LOT NUMBER
- 1* EXEMPTED LOT (SEE CHART EACH SHEET)

- SHEET LIMIT
- BLOCK LIMIT (B.L.)
- LOT LINE
- ~~~~~ WATERWAY AND FLOW DIRECTION

I hereby certify that this map has been created under my immediate supervision and complies with the laws of the State of New Jersey

HAROLD E. PELLOW, P.E. & L.S.
PROFESSIONAL ENGINEER AND LAND SURVEYOR, N.J. LIC. NO.13229
PDF Record Sets\2021 September\HPA INDEX-03.jpg

MAP REFERENCES:

- THIS MAP SUPERSEDES THE MAP DATED JAN. 25, 1963.
- THE DETAILS SHOWN ON THESE MAPS ARE BASED ON THE APPROVED ORIGINAL TAX MAPS AND THE GENERAL REVISIONS THERETO, PRIOR TO JUNE 2006. FOR REVISIONS AND CONDITIONS PRIOR TO JUNE 2006, SEE APPROVED ORIGINAL MAPS ON FILE IN THE MUNICIPAL TAX ASSESSOR'S OFFICE.
- THE AREAS, BOUNDARIES, AND DIMENSIONS SHOWN ON THESE MAPS ARE DERIVED FROM AERIAL SURVEYS, RECORDED PLANS, MAPS, DEEDS, AND WILLS AND ARE TO BE USED FOR ASSESSMENT PURPOSES ONLY.

TAX MAP
TOWNSHIP OF BYRAM
SUSSEX COUNTY, NEW JERSEY
SCALE: 1" = 400' JUNE 2006
Prepared By
HAROLD E. PELLOW
NEW JERSEY PROFESSIONAL ENGINEER AND
LAND SURVEYOR, LIC. #13229
HAROLD E. PELLOW & ASSOCIATES, INC.
17 PLAINS ROAD, AUGUSTA, NEW JERSEY