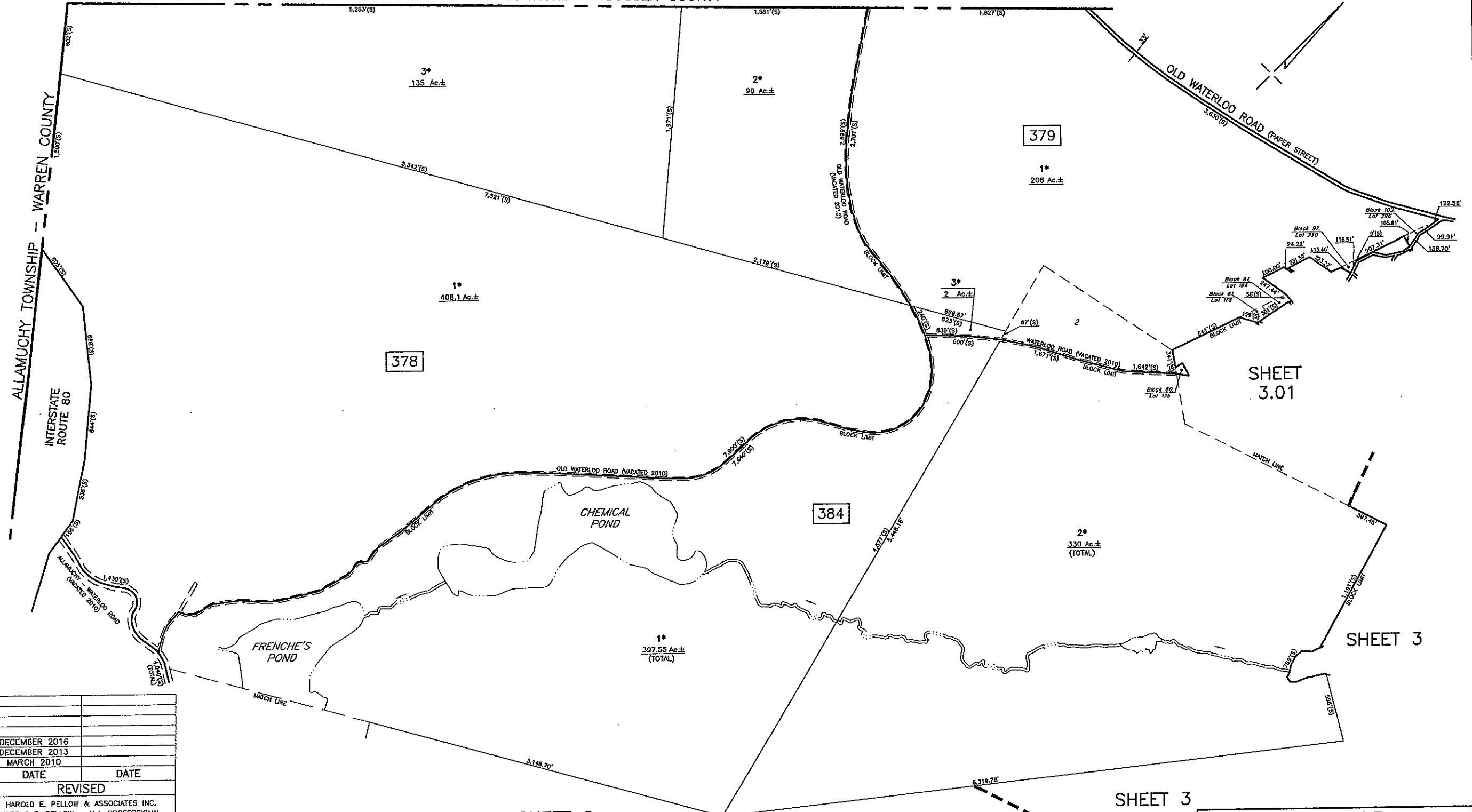


GREEN TOWNSHIP -- SUSSEX COUNTY



DECEMBER 2016	
DECEMBER 2013	
MARCH 2010	
DATE	DATE
REVISED	
HAROLD E. PELLOW & ASSOCIATES INC.	
HAROLD E. PELLOW - N.J. PROFESSIONAL	
ENGINEER & LAND SURVEYOR, L.I.C. NO. 13229	

EXEMPTED LOTS *			
BLOCK	LOT	ACREAGE	REASON FOR EXEMPTION
378	1	408.1	PATRIOTS' PATH COUNCIL, INC.
378	2	90	STATE OF NEW JERSEY D.E.P.
378	3	135	STATE OF NEW JERSEY D.E.P.
379	1	206	STATE OF NEW JERSEY D.E.P.
379	3	2	PATRIOTS' PATH COUNCIL, INC.
384	1	397.55	PATRIOTS' PATH COUNCIL, INC.
384	2	330 (TOTAL)	STATE OF NEW JERSEY D.E.P.

NOTE: LOT ACREAGES SHOWN ABOVE ARE APPROXIMATE AND FOR INFORMATIONAL PURPOSES ONLY.

SHEET 2

MAP REFERENCES:

- THE DETAILS SHOWN ON THESE MAPS ARE BASED ON THE APPROVED ORIGINAL TAX MAPS AND THE GENERAL REVISIONS THERETO, PRIOR TO JUNE 2006. FOR REVISIONS AND CONDITIONS PRIOR TO JUNE 2006, SEE APPROVED ORIGINAL MAPS ON FILE IN THE MUNICIPAL TAX ASSESSOR'S OFFICE.
- THE AREAS, BOUNDARIES, AND DIMENSIONS SHOWN ON THESE MAPS ARE DERIVED FROM AERIAL SURVEYS, RECORDED PLANS, MAPS, DEEDS, AND WILLS AND ARE TO BE USED FOR ASSESSMENT PURPOSES ONLY.

SHEET 3

TAX MAP
 TOWNSHIP OF BYRAM
 SUSSEX COUNTY, NEW JERSEY
 SCALE: 1" = 400' JUNE 2006
 Prepared By
HAROLD E. PELLOW
 NEW JERSEY PROFESSIONAL ENGINEER AND
 LAND SURVEYOR, L.I.C. #13229
 HAROLD E. PELLOW & ASSOCIATES, INC.
 17 PLAINS ROAD, AUGUSTA, NEW JERSEY
 * TO SHOW CONDITIONS AS OF MAR. 2010