

EXEMPTED LOTS *			
BLOCK	LOT	ACREAGE	REASON FOR EXEMPTION
214	1	2.58	STATE OF NEW JERSEY D.E.P.
214.01	1	0.18	STATE OF NEW JERSEY D.E.P.
214.02	1	24.1	STATE OF NEW JERSEY D.E.P.
371	1	43.5	STATE OF NEW JERSEY D.E.P.
371.01	1	10.2	STATE OF NEW JERSEY D.E.P.
377	2	58.99	PATRIOTS' PATH COUNCIL, INC.
384	1	397.55 (TOTAL)	PATRIOTS' PATH COUNCIL, INC.
384	5	368 (TOTAL)	STATE OF NEW JERSEY D.E.P.
384	6	650	STATE OF NEW JERSEY D.E.P.
384	7	10	STATE OF NEW JERSEY D.E.P.
384.01	1	2.3	STATE OF NEW JERSEY D.E.P.

NOTE: LOT ACREAGES SHOWN ABOVE ARE APPROXIMATE AND FOR INFORMATIONAL PURPOSES ONLY.

**MAP REFERENCES:**

- THE DETAILS SHOWN ON THESE MAPS ARE BASED ON THE APPROVED ORIGINAL TAX MAPS AND THE GENERAL REVISIONS THERETO, PRIOR TO JUNE 2006. FOR REVISIONS AND CONDITIONS PRIOR TO JUNE 2006, SEE APPROVED ORIGINAL MAPS ON FILE IN THE MUNICIPAL TAX ASSESSOR'S OFFICE.
- THE AREAS, BOUNDARIES, AND DIMENSIONS SHOWN ON THESE MAPS ARE DERIVED FROM AERIAL SURVEYS, RECORDED PLANS, MAPS, DEEDS, AND WILLS AND ARE TO BE USED FOR ASSESSMENT PURPOSES ONLY.

DATE	DATE
DECEMBER 2013	
MARCH 2010	
REVISED	

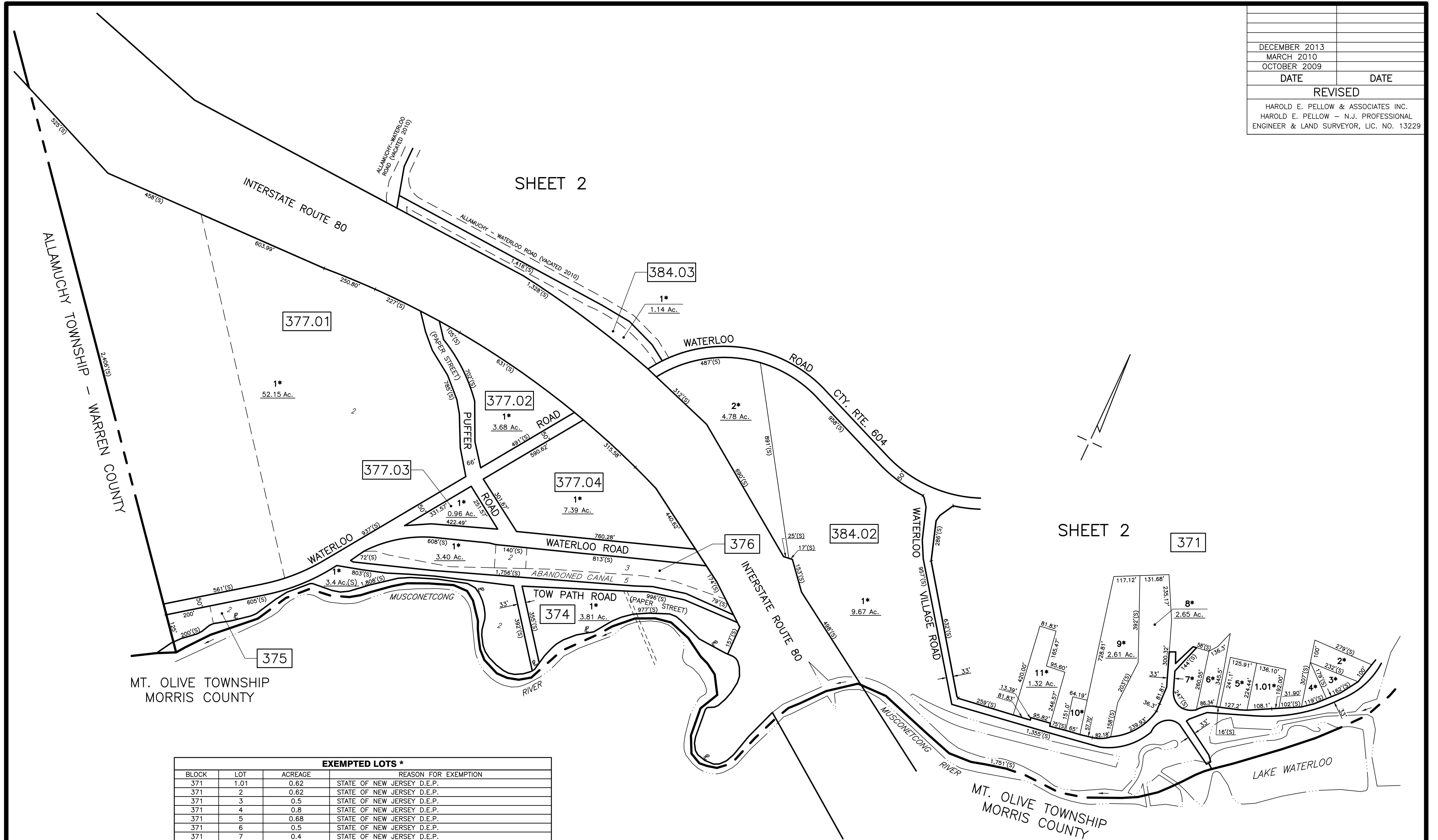
HAROLD E. PELLOW & ASSOCIATES INC.  
 HAROLD E. PELLOW - N.J. PROFESSIONAL  
 ENGINEER & LAND SURVEYOR, LIC. NO. 13229

**TAX MAP**  
 TOWNSHIP OF BYRAM  
 SUSSEX COUNTY, NEW JERSEY  
 SCALE: 1" = 400' JUNE 2006  
 Prepared By  
**HAROLD E. PELLOW**  
 NEW JERSEY PROFESSIONAL ENGINEER AND  
 LAND SURVEYOR, LIC. #13229  
 HAROLD E. PELLOW & ASSOCIATES, INC.  
 17 PLAINS ROAD, AUGUSTA, NEW JERSEY  
 \*TO SHOW CONDITIONS AS OF MAR. 2010

DECEMBER 2013	
MARCH 2010	
OCTOBER 2009	
DATE	DATE
REVISED	
HAROLD E. PELLOW & ASSOCIATES INC. HAROLD E. PELLOW - N.J. PROFESSIONAL ENGINEER & LAND SURVEYOR, LIC. NO. 13229	

SHEET 2

SHEET 2



MT. OLIVE TOWNSHIP  
MORRIS COUNTY

MT. OLIVE TOWNSHIP  
MORRIS COUNTY

EXEMPTED LOTS *			
BLOCK	LOT	ACREAGE	REASON FOR EXEMPTION
371	1.01	0.62	STATE OF NEW JERSEY D.E.P.
371	2	0.62	STATE OF NEW JERSEY D.E.P.
371	3	0.5	STATE OF NEW JERSEY D.E.P.
371	4	0.8	STATE OF NEW JERSEY D.E.P.
371	5	0.68	STATE OF NEW JERSEY D.E.P.
371	6	0.5	STATE OF NEW JERSEY D.E.P.
371	7	0.4	STATE OF NEW JERSEY D.E.P.
371	8	2.65	STATE OF NEW JERSEY D.E.P.
371	9	2.61	STATE OF NEW JERSEY D.E.P.
371	10	0.25	STATE OF NEW JERSEY D.E.P.
371	11	1.32	WATERLOO METHODIST CHURCH
374	1	3.81	STATE OF NEW JERSEY D.E.P.
375	1	3.4	STATE OF NEW JERSEY D.E.P.
376	1	3.40	STATE OF NEW JERSEY D.E.P.
377.01	1	52.15	STATE OF NEW JERSEY D.E.P.
377.02	1	3.68	STATE OF NEW JERSEY D.E.P.
377.03	1	0.96	STATE OF NEW JERSEY D.E.P.
377.04	1	7.39	STATE OF NEW JERSEY D.E.P.
384.02	1	9.67	STATE OF NEW JERSEY D.E.P.
384.02	2	4.78	STATE OF NEW JERSEY D.E.P.
384.03	1	1.14	PATRIOTS' PATH COUNCIL, INC.

NOTE: LOT ACREAGES SHOWN ABOVE ARE APPROXIMATE AND FOR INFORMATIONAL PURPOSES ONLY.

MAP REFERENCES:

- THE DETAILS SHOWN ON THESE MAPS ARE BASED ON THE APPROVED ORIGINAL TAX MAPS AND THE GENERAL REVISIONS THERETO, PRIOR TO JUNE 2006. FOR REVISIONS AND CONDITIONS PRIOR TO JUNE 2006, SEE APPROVED ORIGINAL MAPS ON FILE IN THE MUNICIPAL TAX ASSESSOR'S OFFICE.
- THE AREAS, BOUNDARIES, AND DIMENSIONS SHOWN ON THESE MAPS ARE DERIVED FROM AERIAL SURVEYS, RECORDED PLANS, MAPS, DEEDS, AND WILLS AND ARE TO BE USED FOR ASSESSMENT PURPOSES ONLY.

**TAX MAP**  
**TOWNSHIP OF BYRAM**  
 SUSSEX COUNTY, NEW JERSEY  
 SCALE: 1" = 200' JUNE 2006  
 Prepared By  
**HAROLD E. PELLOW**  
 NEW JERSEY PROFESSIONAL ENGINEER AND  
 LAND SURVEYOR, LIC. #13229  
 HAROLD E. PELLOW & ASSOCIATES, INC.  
 17 PLAINS ROAD, AUGUSTA, NEW JERSEY  
\* TO SHOW CONDITIONS AS OF MAR. 2010