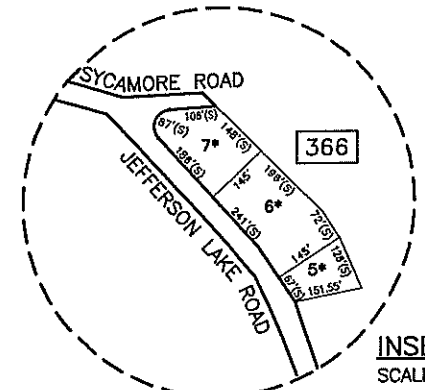


INSERT "A"
SCALE: 1"=200'



INSERT "B"
SCALE: 1"=200'

EXEMPT LOTS *

BLOCK	LOT	ACREAGE	REASON FOR EXEMPTION
30	85	1.238	STATE OF NEW JERSEY D.E.P.
64	1	23.02	STATE OF NEW JERSEY D.E.P.
70	10	17.64	STATE OF NEW JERSEY D.E.P.
364	4	13.87	TOWNSHIP OF BYRAM
364	4.01	13.41	BOARD OF EDUCATION
365	1.03	1.45	STATE OF NEW JERSEY D.O.T.
365	3	0.465	TOWNSHIP OF BYRAM
365	16	89.81	BOARD OF EDUCATION
365	16.01	22.04	TOWNSHIP OF BYRAM
365	17.05	3.716	STATE OF NEW JERSEY D.O.T.
366	2	79.4	STATE OF NEW JERSEY D.E.P.
366	5	0.3	STATE OF NEW JERSEY D.E.P.
366	6	0.8	STATE OF NEW JERSEY D.E.P.
366	7	0.384	STATE OF NEW JERSEY D.E.P.
367	1	3	STATE OF NEW JERSEY D.E.P.
368	1	4.56	STATE OF NEW JERSEY D.E.P.
369	1	3	STATE OF NEW JERSEY D.E.P.
369	2	2.54	STATE OF NEW JERSEY D.E.P.
370	1	1.07	STATE OF NEW JERSEY D.E.P.
370	2	55.44	STATE OF NEW JERSEY D.E.P.
370	3	1.1	STATE OF NEW JERSEY D.E.P.
370	5	1.2	STATE OF NEW JERSEY D.E.P.
370	7	55.79	STATE OF NEW JERSEY D.E.P.
370	9	0.617	STATE OF NEW JERSEY D.E.P.

MAP REFERENCES:

- THE DETAILS SHOWN ON THESE MAPS ARE BASED ON THE APPROVED ORIGINAL TAX MAPS AND THE GENERAL REVISIONS THERETO, PRIOR TO JUNE 2006. FOR REVISIONS AND CONDITIONS PRIOR TO JUNE 2006, SEE APPROVED ORIGINAL MAPS ON FILE IN THE MUNICIPAL TAX ASSESSOR'S OFFICE.
- THE AREAS, BOUNDARIES, AND DIMENSIONS SHOWN ON THESE MAPS ARE DERIVED FROM AERIAL SURVEYS, RECORDED PLANS, MAPS, DEEDS, AND WILLS AND ARE TO BE USED FOR ASSESSMENT PURPOSES ONLY.

DATE	REVISED	DATE
DECEMBER 2013		
AUGUST 2011		
MARCH 2010		

HAROLD E. PELLOW & ASSOCIATES INC.
HAROLD E. PELLOW - N.J. PROFESSIONAL ENGINEER & LAND SURVEYOR, LIC. NO. 13229

TAX MAP
TOWNSHIP OF BYRAM
SUSSEX COUNTY, NEW JERSEY
SCALE: 1" = 400' JUNE 2006
Prepared By
HAROLD E. PELLOW
NEW JERSEY PROFESSIONAL ENGINEER AND
LAND SURVEYOR, LIC. #13229
HAROLD E. PELLOW & ASSOCIATES, INC.
17 PLAINS ROAD, AUGUSTA, NEW JERSEY
*TO SHOW CONDITIONS AS OF AUG. 2011

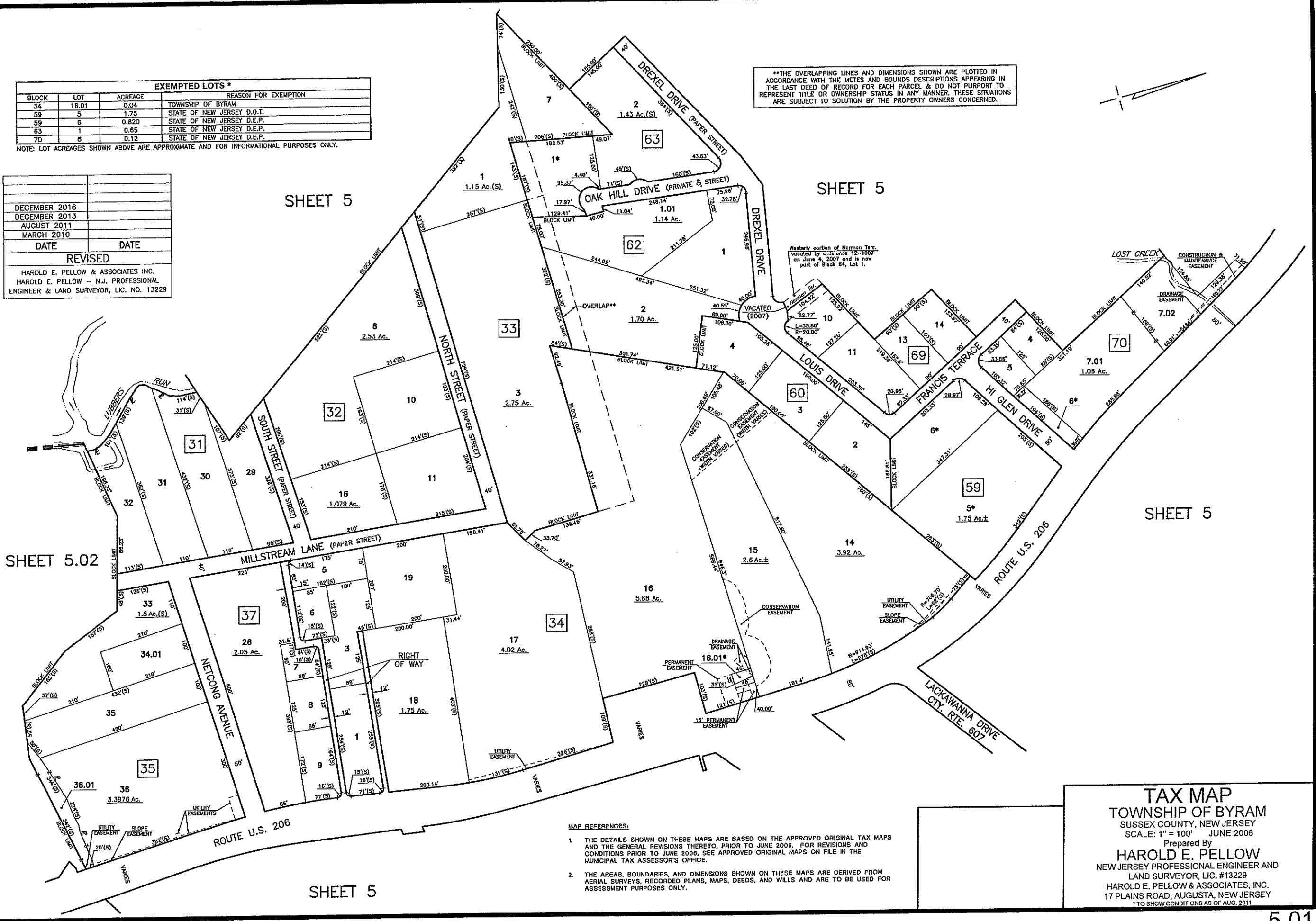
EXEMPTED LOTS *			
BLOCK	LOT	ACREAGE	REASON FOR EXEMPTION
34	16.01	0.04	TOWNSHIP OF BYRAM
59	5	1.75	STATE OF NEW JERSEY D.O.T.
59	6	0.820	STATE OF NEW JERSEY D.E.P.
63	1	0.65	STATE OF NEW JERSEY D.E.P.
70	6	0.12	STATE OF NEW JERSEY D.E.P.

NOTE: LOT ACREAGES SHOWN ABOVE ARE APPROXIMATE AND FOR INFORMATIONAL PURPOSES ONLY.

DATE	DATE
DECEMBER 2016	
DECEMBER 2013	
AUGUST 2011	
MARCH 2010	
REVISED	

HAROLD E. PELLOW & ASSOCIATES INC.
HAROLD E. PELLOW - N.J. PROFESSIONAL
ENGINEER & LAND SURVEYOR, LIC. NO. 13229

**THE OVERLAPPING LINES AND DIMENSIONS SHOWN ARE PLOTTED IN ACCORDANCE WITH THE METES AND BOUNDS DESCRIPTIONS APPEARING IN THE LAST DEED OF RECORD FOR EACH PARCEL & DO NOT PURPORT TO REPRESENT TITLE OR OWNERSHIP STATUS IN ANY MANNER. THESE SITUATIONS ARE SUBJECT TO SOLUTION BY THE PROPERTY OWNERS CONCERNED.

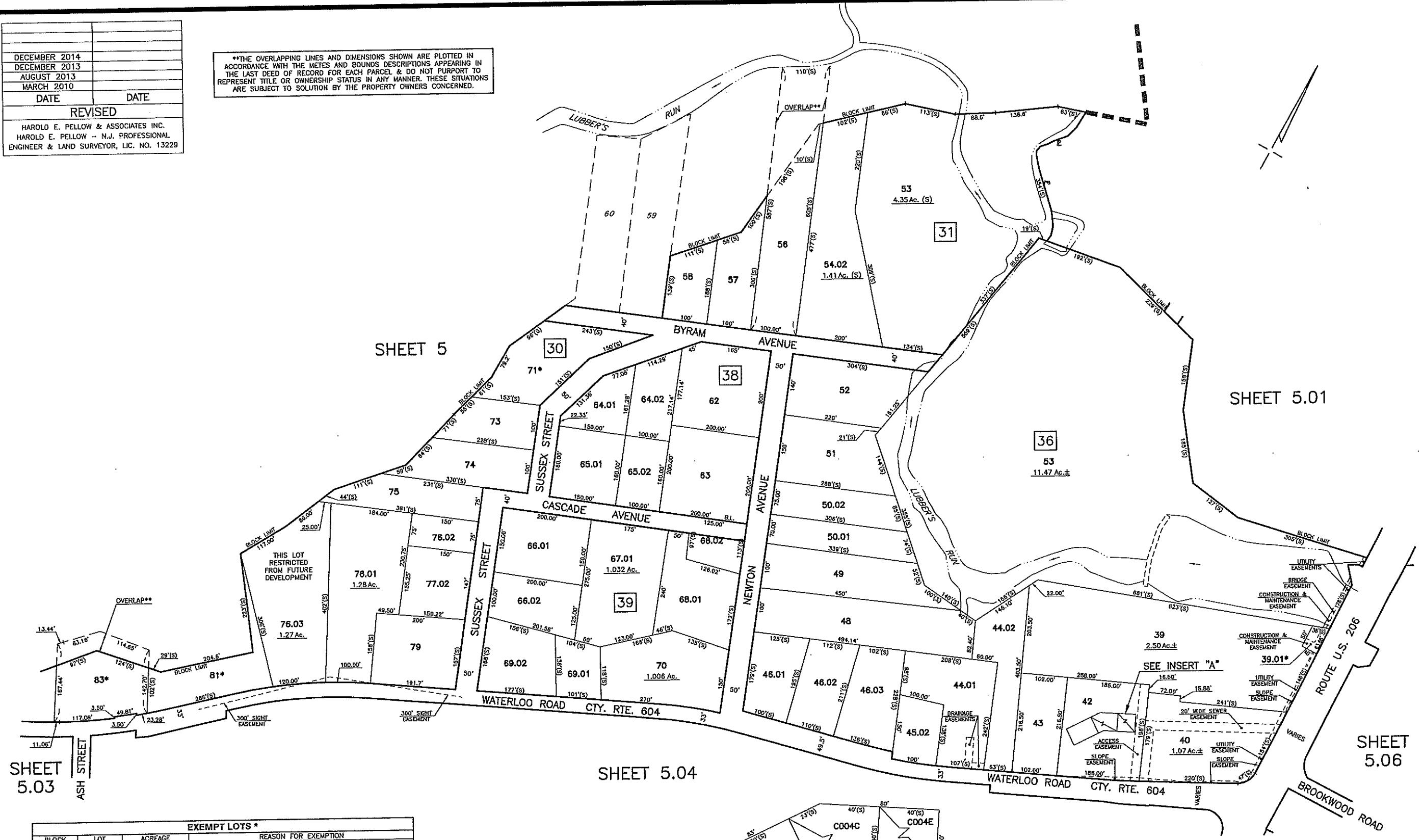


- MAP REFERENCES:
- THE DETAILS SHOWN ON THESE MAPS ARE BASED ON THE APPROVED ORIGINAL TAX MAPS AND THE GENERAL REVISIONS THERETO, PRIOR TO JUNE 2006. FOR REVISIONS AND CONDITIONS PRIOR TO JUNE 2006, SEE APPROVED ORIGINAL MAPS ON FILE IN THE MUNICIPAL TAX ASSESSOR'S OFFICE.
 - THE AREAS, BOUNDARIES, AND DIMENSIONS SHOWN ON THESE MAPS ARE DERIVED FROM AERIAL SURVEYS, RECORDED PLANS, MAPS, DEEDS, AND WILLS AND ARE TO BE USED FOR ASSESSMENT PURPOSES ONLY.

TAX MAP
TOWNSHIP OF BYRAM
 SUSSEX COUNTY, NEW JERSEY
 SCALE: 1" = 100' JUNE 2006
 Prepared By
HAROLD E. PELLOW
 NEW JERSEY PROFESSIONAL ENGINEER AND
 LAND SURVEYOR, LIC. #13229
 HAROLD E. PELLOW & ASSOCIATES, INC.
 17 PLAINS ROAD, AUGUSTA, NEW JERSEY
* TO SHOW CONDITIONS AS OF AUG. 2011

DECEMBER 2014	
DECEMBER 2013	
AUGUST 2013	
MARCH 2010	
DATE	DATE
REVISED	
HAROLD E. PELLOW & ASSOCIATES INC.	
HAROLD E. PELLOW - N.J. PROFESSIONAL ENGINEER & LAND SURVEYOR, LIC. NO. 13229	

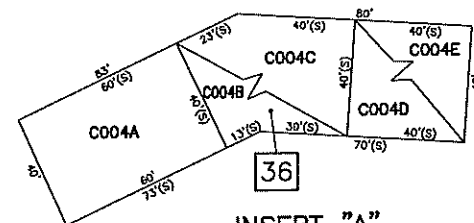
**THE OVERLAPPING LINES AND DIMENSIONS SHOWN ARE PLOTTED IN ACCORDANCE WITH THE METES AND BOUNDS DESCRIPTIONS APPEARING IN THE LAST DEED OF RECORD FOR EACH PARCEL & DO NOT PURPORT TO REPRESENT TITLE OR OWNERSHIP STATUS IN ANY MANNER. THESE SITUATIONS ARE SUBJECT TO SOLUTION BY THE PROPERTY OWNERS CONCERNED.



EXEMPT LOTS *			
BLOCK	LOT	ACREAGE	REASON FOR EXEMPTION
30	71	0.839	STATE OF NEW JERSEY
30	81	0.783	STATE OF NEW JERSEY D.E.P.
30	83	0.672	STATE OF NEW JERSEY D.E.P.
36	39.01	0.05	TOWNSHIP OF BYRAM

MAP REFERENCES:

- THE DETAILS SHOWN ON THESE MAPS ARE BASED ON THE APPROVED ORIGINAL TAX MAPS AND THE GENERAL REVISIONS THERETO, PRIOR TO JUNE 2006. FOR REVISIONS AND CONDITIONS PRIOR TO JUNE 2006, SEE APPROVED ORIGINAL MAPS ON FILE IN THE MUNICIPAL TAX ASSESSOR'S OFFICE.
- THE AREAS, BOUNDARIES, AND DIMENSIONS SHOWN ON THESE MAPS ARE DERIVED FROM AERIAL SURVEYS, RECORDED PLANS, MAPS, DEEDS, AND WILLS AND ARE TO BE USED FOR ASSESSMENT PURPOSES ONLY.



INSERT "A"
SCALE: 1"=30'

TAX MAP
TOWNSHIP OF BYRAM
 SUSSEX COUNTY, NEW JERSEY
 SCALE: 1" = 100' JUNE 2006
 Prepared By
HAROLD E. PELLOW
 NEW JERSEY PROFESSIONAL ENGINEER AND
 LAND SURVEYOR, LIC. #13229
 HAROLD E. PELLOW & ASSOCIATES, INC.
 17 PLAINS ROAD, AUGUSTA, NEW JERSEY
 * TO SHOW CONDITIONS AS OF AUG. 2011

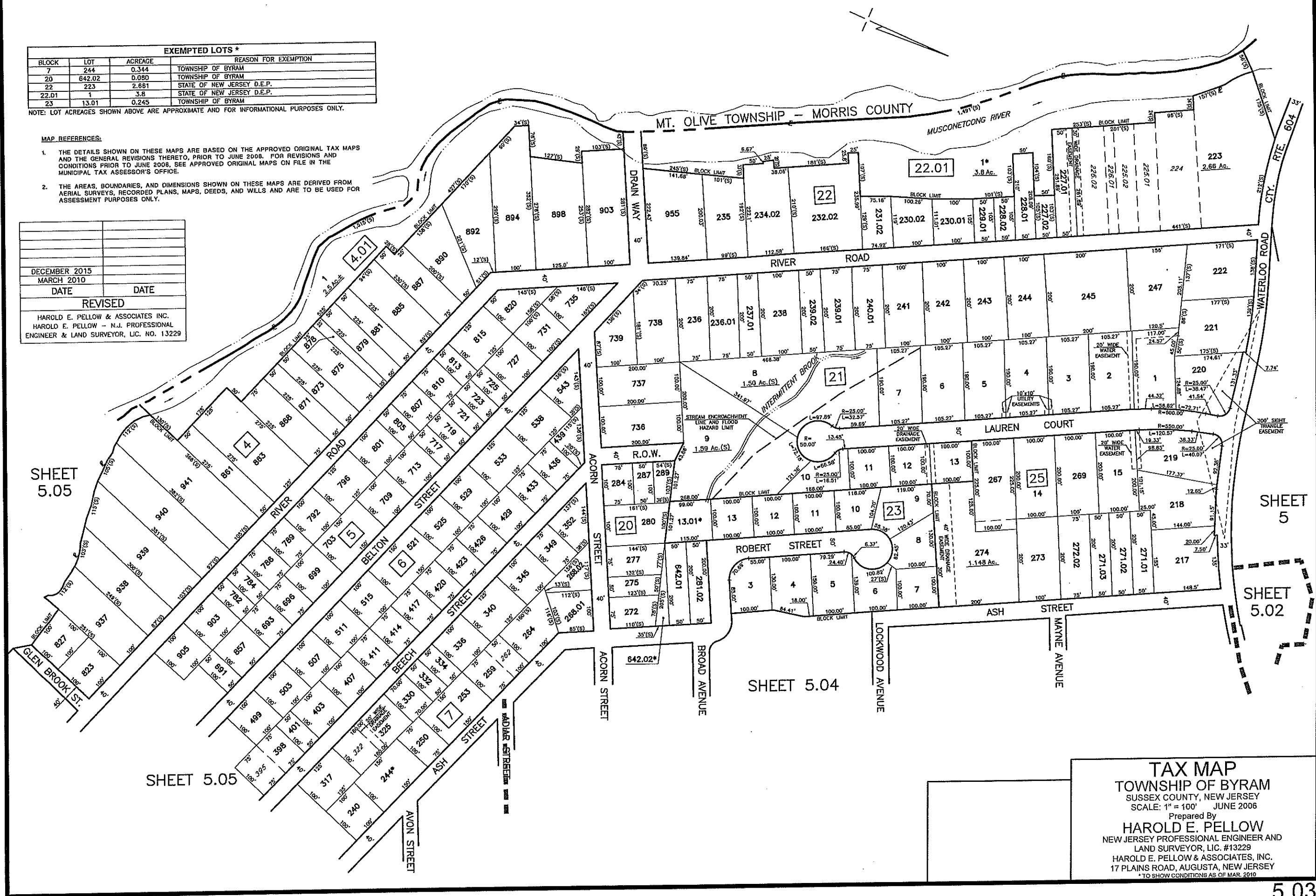
EXEMPTED LOTS *			
BLOCK	LOT	ACREAGE	REASON FOR EXEMPTION
7	244	0.344	TOWNSHIP OF BYRAM
20	642.02	0.080	TOWNSHIP OF BYRAM
22	223	2.681	STATE OF NEW JERSEY D.E.P.
22.01	1	3.8	STATE OF NEW JERSEY D.E.P.
23	13.01	0.245	TOWNSHIP OF BYRAM

NOTE: LOT ACREAGES SHOWN ABOVE ARE APPROXIMATE AND FOR INFORMATIONAL PURPOSES ONLY.

MAP REFERENCES:

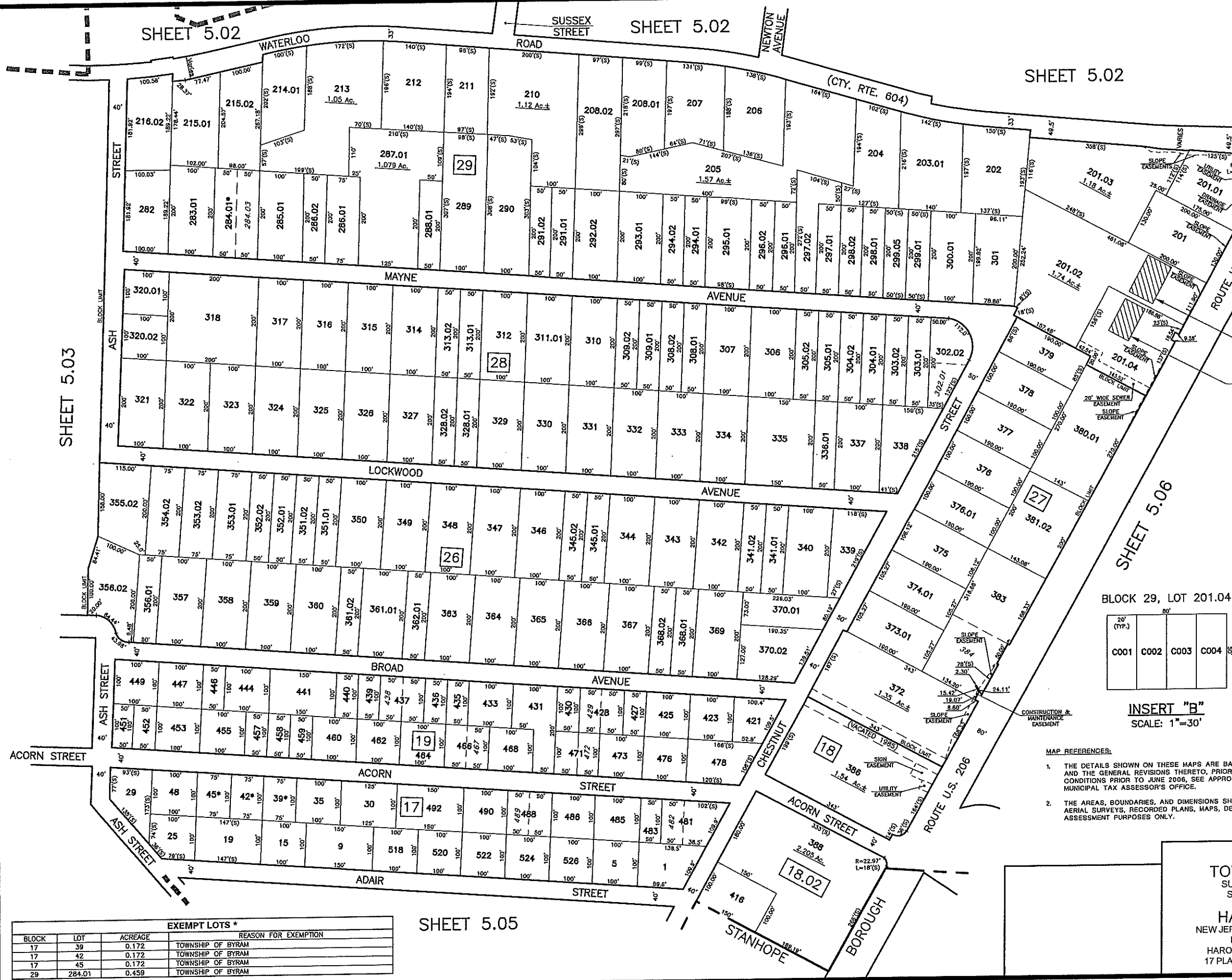
- THE DETAILS SHOWN ON THESE MAPS ARE BASED ON THE APPROVED ORIGINAL TAX MAPS AND THE GENERAL REVISIONS THERETO, PRIOR TO JUNE 2008. FOR REVISIONS AND CONDITIONS PRIOR TO JUNE 2008, SEE APPROVED ORIGINAL MAPS ON FILE IN THE MUNICIPAL TAX ASSESSOR'S OFFICE.
- THE AREAS, BOUNDARIES, AND DIMENSIONS SHOWN ON THESE MAPS ARE DERIVED FROM AERIAL SURVEYS, RECORDED PLANS, MAPS, DEEDS, AND WILLS AND ARE TO BE USED FOR ASSESSMENT PURPOSES ONLY.

DECEMBER 2015	
MARCH 2010	
DATE	DATE
REVISED	
HAROLD E. PELLOW & ASSOCIATES INC.	
HAROLD E. PELLOW - N.J. PROFESSIONAL	
ENGINEER & LAND SURVEYOR, LIC. NO. 13229	



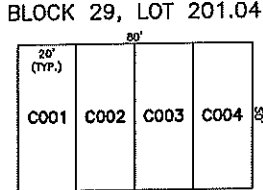
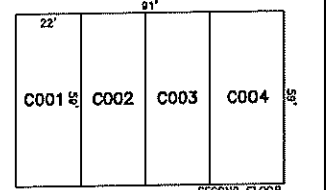
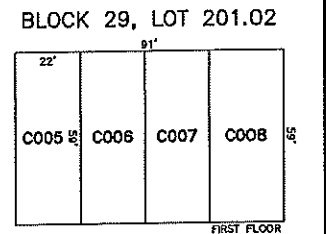
TAX MAP
 TOWNSHIP OF BYRAM
 SUSSEX COUNTY, NEW JERSEY
 SCALE: 1" = 100' JUNE 2006
 Prepared By
HAROLD E. PELLOW
 NEW JERSEY PROFESSIONAL ENGINEER AND
 LAND SURVEYOR, LIC. #13229
 HAROLD E. PELLOW & ASSOCIATES, INC.
 17 PLAINS ROAD, AUGUSTA, NEW JERSEY
* TO SHOW CONDITIONS AS OF MAR. 2010

DECEMBER 2016	
DECEMBER 2015	
DECEMBER 2013	
AUGUST 2011	
MARCH 2010	
DATE	DATE
REVISED	
HAROLD E. PELLOW & ASSOCIATES INC. HAROLD E. PELLOW - N.J. PROFESSIONAL ENGINEER & LAND SURVEYOR, LIC. NO. 13229	



SEE INSERT "A"
2 STORY CONDOMINIUM
OFFICE BLDG.

SEE INSERT "B"
1 STORY CONDOMINIUM
OFFICE BLDG.



INSERT "B"
SCALE: 1"=30'

INSERT "A"
SCALE: 1"=30'

MAP REFERENCES:

- THE DETAILS SHOWN ON THESE MAPS ARE BASED ON THE APPROVED ORIGINAL TAX MAPS AND THE GENERAL REVISIONS THERETO, PRIOR TO JUNE 2006. FOR REVISIONS AND CONDITIONS PRIOR TO JUNE 2006, SEE APPROVED ORIGINAL MAPS ON FILE IN THE MUNICIPAL TAX ASSESSOR'S OFFICE.
- THE AREAS, BOUNDARIES, AND DIMENSIONS SHOWN ON THESE MAPS ARE DERIVED FROM AERIAL SURVEYS, RECORDED PLANS, MAPS, DEEDS, AND WILLS AND ARE TO BE USED FOR ASSESSMENT PURPOSES ONLY.

TAX MAP
TOWNSHIP OF BYRAM
 SUSSEX COUNTY, NEW JERSEY
 SCALE: 1" = 100' JUNE 2006
 Prepared By
HAROLD E. PELLOW
 NEW JERSEY PROFESSIONAL ENGINEER AND
 LAND SURVEYOR, LIC. #13229
 HAROLD E. PELLOW & ASSOCIATES, INC.
 17 PLAINS ROAD, AUGUSTA, NEW JERSEY
 * TO SHOW CONDITIONS AS OF AUG. 2011

EXEMPT LOTS *

BLOCK	LOT	ACREAGE	REASON FOR EXEMPTION
17	39	0.172	TOWNSHIP OF BYRAM
17	42	0.172	TOWNSHIP OF BYRAM
17	45	0.172	TOWNSHIP OF BYRAM
29	284.01	0.459	TOWNSHIP OF BYRAM

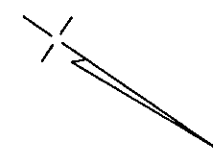
SHEET 5.05

DECEMBER 2015	
DECEMBER 2014	
AUGUST 2013	
MARCH 2010	
DATE	DATE
REVISED	
HAROLD E. PELLOW & ASSOCIATES INC.	
HAROLD E. PELLOW - N.J. PROFESSIONAL ENGINEER & LAND SURVEYOR, LIC. NO. 13229	

EXEMPT LOTS *			
BLOCK	LOT	ACREAGE	REASON FOR EXEMPTION
2	931	0.164	TOWNSHIP OF BYRAM
3	831	0.16	TOWNSHIP OF BYRAM
6	386	0.229	TOWNSHIP OF BYRAM
7	305	0.22	TOWNSHIP OF BYRAM
8	616	0.182	STATE OF NEW JERSEY D.O.T.
8	619	0.125	TOWNSHIP OF BYRAM
8	740	0.167	TOWNSHIP OF BYRAM
8	747	0.241	TOWNSHIP OF BYRAM
9	576	0.077	STATE OF NEW JERSEY D.O.T.
11	196	0.287	TOWNSHIP OF BYRAM
14	175	0.103	TOWNSHIP OF BYRAM
15	590	0.115	TOWNSHIP OF BYRAM
16	85	0.229	TOWNSHIP OF BYRAM
16	123	0.115	TOWNSHIP OF BYRAM
16	125	0.109	TOWNSHIP OF BYRAM

MAP REFERENCES:

1. THE DETAILS SHOWN ON THESE MAPS ARE BASED ON THE APPROVED ORIGINAL TAX MAPS AND THE GENERAL REVISIONS THERETO, PRIOR TO JUNE 2006, FOR REVISIONS AND CONDITIONS PRIOR TO JUNE 2006, SEE APPROVED ORIGINAL MAPS ON FILE IN THE MUNICIPAL TAX ASSESSOR'S OFFICE.
2. THE AREAS, BOUNDARIES, AND DIMENSIONS SHOWN ON THESE MAPS ARE DERIVED FROM AERIAL SURVEYS, RECORDED PLANS, MAPS, DEEDS, AND WILLS AND ARE TO BE USED FOR ASSESSMENT PURPOSES ONLY.



TAX MAP
 TOWNSHIP OF BYRAM
 SUSSEX COUNTY, NEW JERSEY
 SCALE: 1" = 100' JUNE 2006
 Prepared By
HAROLD E. PELLOW
 NEW JERSEY PROFESSIONAL ENGINEER AND
 LAND SURVEYOR, LIC. #13229
 HAROLD E. PELLOW & ASSOCIATES, INC.
 17 PLAINS ROAD, AUGUSTA, NEW JERSEY
 * TO SHOW CONDITIONS AS OF JUNE 2006

DECEMBER 2014	
DECEMBER 2013	
AUGUST 2011	
MARCH 2010	
JULY 2009	
DATE	DATE
REVISED	
HAROLD E. PELLOW & ASSOCIATES INC.	
HAROLD E. PELLOW - N.J. PROFESSIONAL	
ENGINEER & LAND SURVEYOR, LIC. NO. 13229	

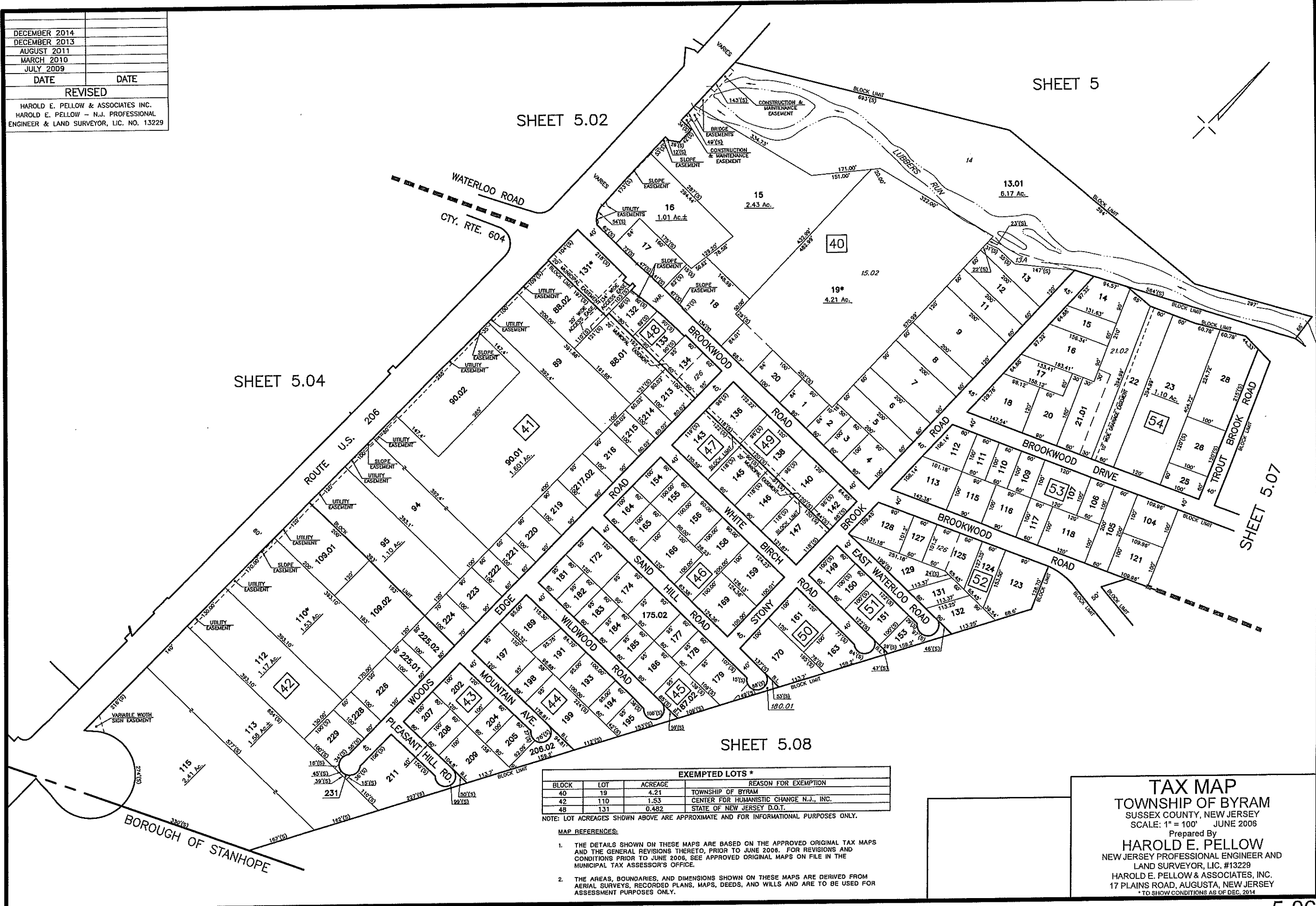
SHEET 5

SHEET 5.02

SHEET 5.04

SHEET 5.08

SHEET 5.07



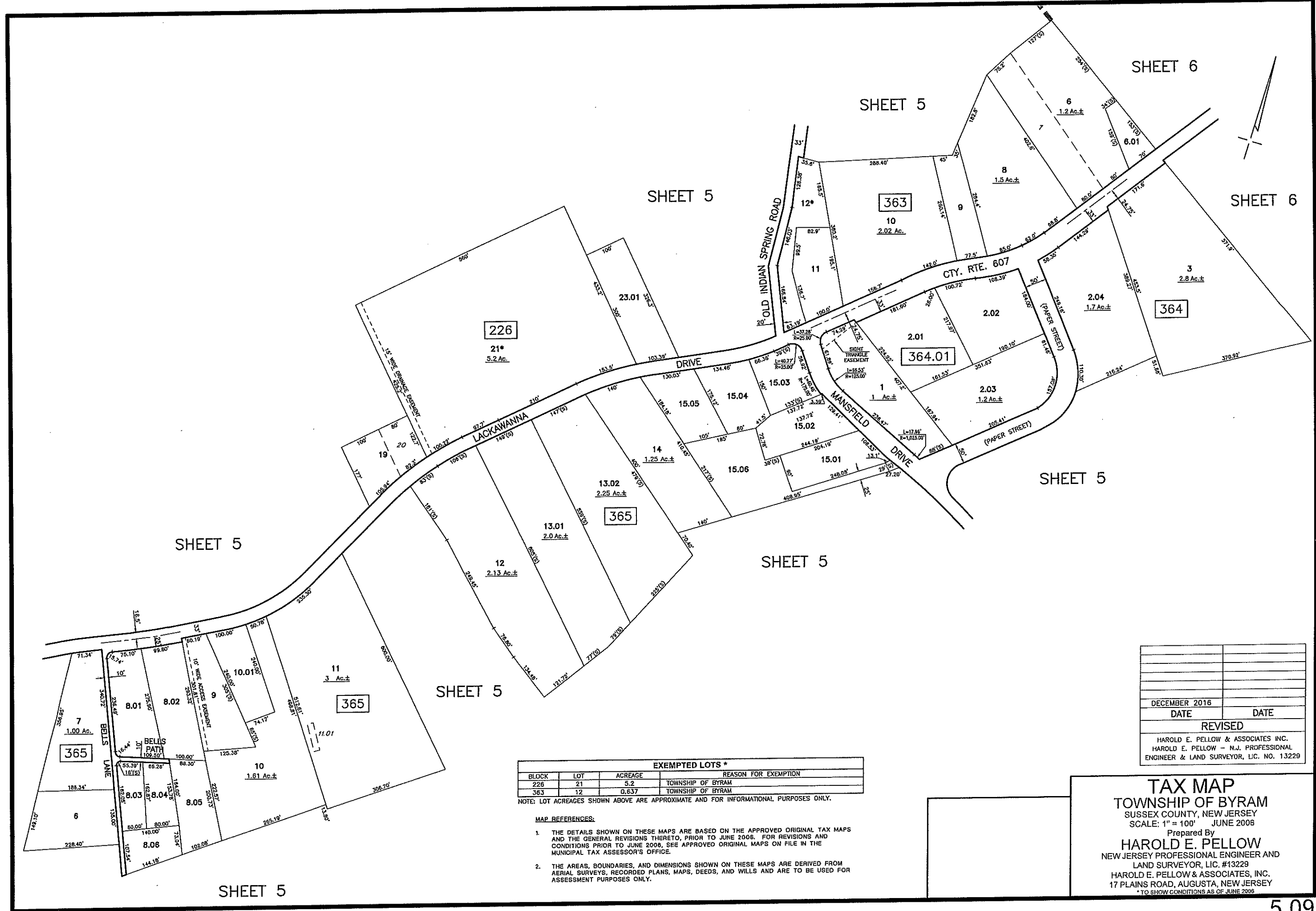
EXEMPTED LOTS *

BLOCK	LOT	ACREAGE	REASON FOR EXEMPTION
40	19	4.21	TOWNSHIP OF BYRAM
42	110	1.53	CENTER FOR HUMANISTIC CHANGE N.J., INC.
48	131	0.482	STATE OF NEW JERSEY D.O.T.

NOTE: LOT ACREAGES SHOWN ABOVE ARE APPROXIMATE AND FOR INFORMATIONAL PURPOSES ONLY.

- MAP REFERENCES:**
- THE DETAILS SHOWN ON THESE MAPS ARE BASED ON THE APPROVED ORIGINAL TAX MAPS AND THE GENERAL REVISIONS THERETO, PRIOR TO JUNE 2006. FOR REVISIONS AND CONDITIONS PRIOR TO JUNE 2006, SEE APPROVED ORIGINAL MAPS ON FILE IN THE MUNICIPAL TAX ASSESSOR'S OFFICE.
 - THE AREAS, BOUNDARIES, AND DIMENSIONS SHOWN ON THESE MAPS ARE DERIVED FROM AERIAL SURVEYS, RECORDED PLANS, MAPS, DEEDS, AND WILLS AND ARE TO BE USED FOR ASSESSMENT PURPOSES ONLY.

TAX MAP
TOWNSHIP OF BYRAM
 SUSSEX COUNTY, NEW JERSEY
 SCALE: 1" = 100' JUNE 2006
 Prepared By
HAROLD E. PELLOW
 NEW JERSEY PROFESSIONAL ENGINEER AND
 LAND SURVEYOR, LIC. #13229
 HAROLD E. PELLOW & ASSOCIATES, INC.
 17 PLAINS ROAD, AUGUSTA, NEW JERSEY
 * TO SHOW CONDITIONS AS OF DEC. 2014



DECEMBER 2016	
DATE	DATE
REVISED	
HAROLD E. PELLOW & ASSOCIATES INC. HAROLD E. PELLOW - N.J. PROFESSIONAL ENGINEER & LAND SURVEYOR, L.C. NO. 13229	

EXEMPTED LOTS *			
BLOCK	LOT	ACREAGE	REASON FOR EXEMPTION
226	21	5.2	TOWNSHIP OF BYRAM
363	12	0.637	TOWNSHIP OF BYRAM

NOTE: LOT ACREAGES SHOWN ABOVE ARE APPROXIMATE AND FOR INFORMATIONAL PURPOSES ONLY.

- MAP REFERENCES:**
- THE DETAILS SHOWN ON THESE MAPS ARE BASED ON THE APPROVED ORIGINAL TAX MAPS AND THE GENERAL REVISIONS THERETO, PRIOR TO JUNE 2008. FOR REVISIONS AND CONDITIONS PRIOR TO JUNE 2008, SEE APPROVED ORIGINAL MAPS ON FILE IN THE MUNICIPAL TAX ASSESSOR'S OFFICE.
 - THE AREAS, BOUNDARIES, AND DIMENSIONS SHOWN ON THESE MAPS ARE DERIVED FROM AERIAL SURVEYS, RECORDED PLANS, MAPS, DEEDS, AND WILLS AND ARE TO BE USED FOR ASSESSMENT PURPOSES ONLY.

TAX MAP
TOWNSHIP OF BYRAM
 SUSSEX COUNTY, NEW JERSEY
 SCALE: 1" = 100'
 JUNE 2008
 Prepared By
HAROLD E. PELLOW
 NEW JERSEY PROFESSIONAL ENGINEER AND
 LAND SURVEYOR, L.C. #13229
 HAROLD E. PELLOW & ASSOCIATES, INC.
 17 PLAINS ROAD, AUGUSTA, NEW JERSEY
 *TO SHOW CONDITIONS AS OF JUNE 2008