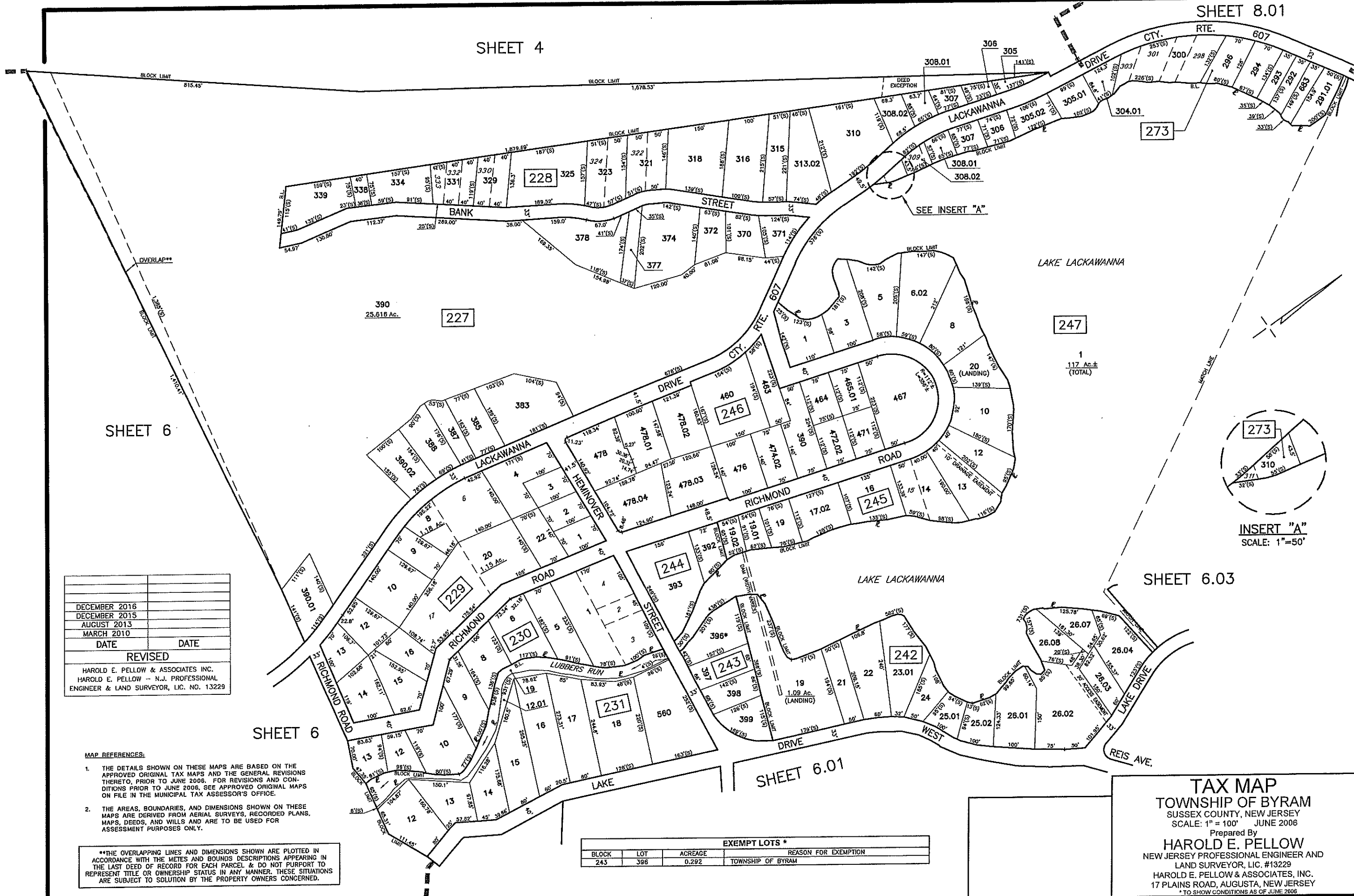


SHEET 4

SHEET 8.01



SHEET 6

SHEET 6.03

SHEET 6.01

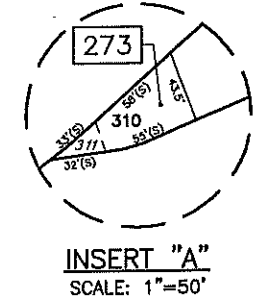
DATE	REVISED	DATE
DECEMBER 2016		
DECEMBER 2015		
AUGUST 2013		
MARCH 2010		

HAROLD E. PELLOW & ASSOCIATES INC.
 HAROLD E. PELLOW - N.J. PROFESSIONAL
 ENGINEER & LAND SURVEYOR, LIC. NO. 13229

- MAP REFERENCES:
- THE DETAILS SHOWN ON THESE MAPS ARE BASED ON THE APPROVED ORIGINAL TAX MAPS AND THE GENERAL REVISIONS THERETO, PRIOR TO JUNE 2006. FOR REVISIONS AND CONDITIONS PRIOR TO JUNE 2006, SEE APPROVED ORIGINAL MAPS ON FILE IN THE MUNICIPAL TAX ASSESSOR'S OFFICE.
 - THE AREAS, BOUNDARIES, AND DIMENSIONS SHOWN ON THESE MAPS ARE DERIVED FROM AERIAL SURVEYS, RECORDED PLANS, MAPS, DEEDS, AND WILLS AND ARE TO BE USED FOR ASSESSMENT PURPOSES ONLY.

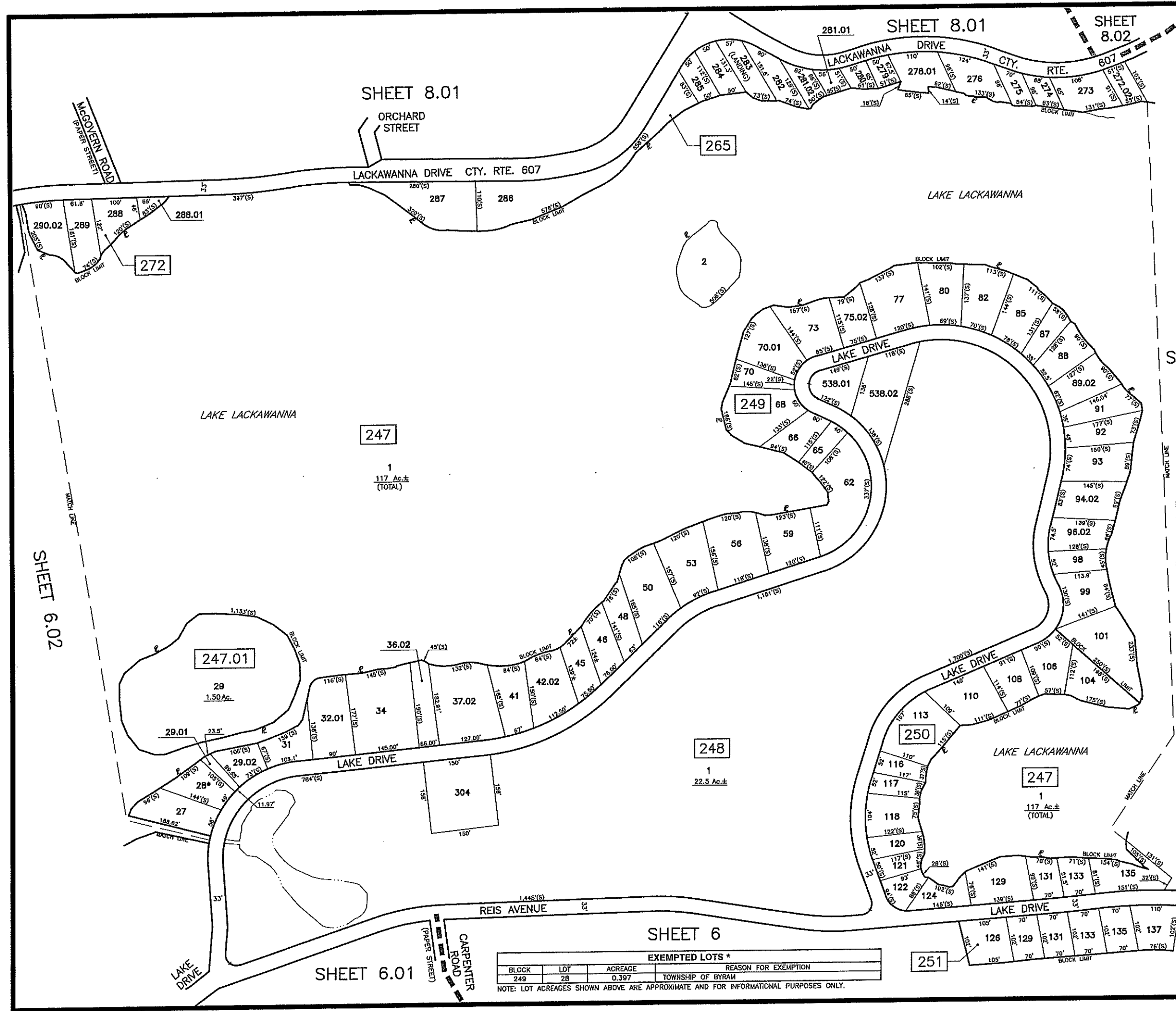
**THE OVERLAPPING LINES AND DIMENSIONS SHOWN ARE PLOTTED IN ACCORDANCE WITH THE METES AND BOUNDS DESCRIPTIONS APPEARING IN THE LAST DEED OF RECORD FOR EACH PARCEL & DO NOT PURPORT TO REPRESENT TITLE OR OWNERSHIP STATUS IN ANY MANNER. THESE SITUATIONS ARE SUBJECT TO SOLUTION BY THE PROPERTY OWNERS CONCERNED.

EXEMPT LOTS *			
BLOCK	LOT	ACREAGE	REASON FOR EXEMPTION
243	396	0.292	TOWNSHIP OF BYRAM



TAX MAP
TOWNSHIP OF BYRAM
 SUSSEX COUNTY, NEW JERSEY
 SCALE: 1" = 100' JUNE 2006
 Prepared By
HAROLD E. PELLOW
 NEW JERSEY PROFESSIONAL ENGINEER AND
 LAND SURVEYOR, LIC. #13229
 HAROLD E. PELLOW & ASSOCIATES, INC.
 17 PLAINS ROAD, AUGUSTA, NEW JERSEY
 *TO SHOW CONDITIONS AS OF JUNE 2006

MARCH 2010	
JULY 2009	
DATE	DATE
REVISED	
HAROLD E. PELLOW & ASSOCIATES INC.	
HAROLD E. PELLOW - N.J. PROFESSIONAL ENGINEER & LAND SURVEYOR, LIC. NO. 13229	



- MAP REFERENCES:
1. THE DETAILS SHOWN ON THESE MAPS ARE BASED ON THE APPROVED ORIGINAL TAX MAPS AND THE GENERAL REVISIONS THERETO, PRIOR TO JUNE 2006. FOR REVISIONS AND CONDITIONS PRIOR TO JUNE 2006, SEE APPROVED ORIGINAL MAPS ON FILE IN THE MUNICIPAL TAX ASSESSOR'S OFFICE.
 2. THE AREAS, BOUNDARIES, AND DIMENSIONS SHOWN ON THESE MAPS ARE DERIVED FROM AERIAL SURVEYS, RECORDED PLANS, MAPS, DEEDS, AND WILLS AND ARE TO BE USED FOR ASSESSMENT PURPOSES ONLY.

EXEMPTED LOTS *

BLOCK	LOT	ACREAGE	REASON FOR EXEMPTION
249	28	0.397	TOWNSHIP OF BYRAM

NOTE: LOT ACREAGES SHOWN ABOVE ARE APPROXIMATE AND FOR INFORMATIONAL PURPOSES ONLY.

TAX MAP
TOWNSHIP OF BYRAM
 SUSSEX COUNTY, NEW JERSEY
 SCALE: 1" = 100'
 JUNE 2006
 Prepared By
HAROLD E. PELLOW
 NEW JERSEY PROFESSIONAL ENGINEER AND
 LAND SURVEYOR, LIC. #13229
 HAROLD E. PELLOW & ASSOCIATES, INC.
 17 PLAINS ROAD, AUGUSTA, NEW JERSEY
 * TO SHOW CONDITIONS AS OF MAR. 2010

SHEET 6.02

SHEET 6.01

SHEET 6

SHEET 6.04

AUGUST 2013
 MARCH 2010
 DATE DATE
 REVISED
 HAROLD E. PELLOW & ASSOCIATES INC.
 HAROLD E. PELLOW - N.J. PROFESSIONAL
 ENGINEER & LAND SURVEYOR, LIC. NO. 13229

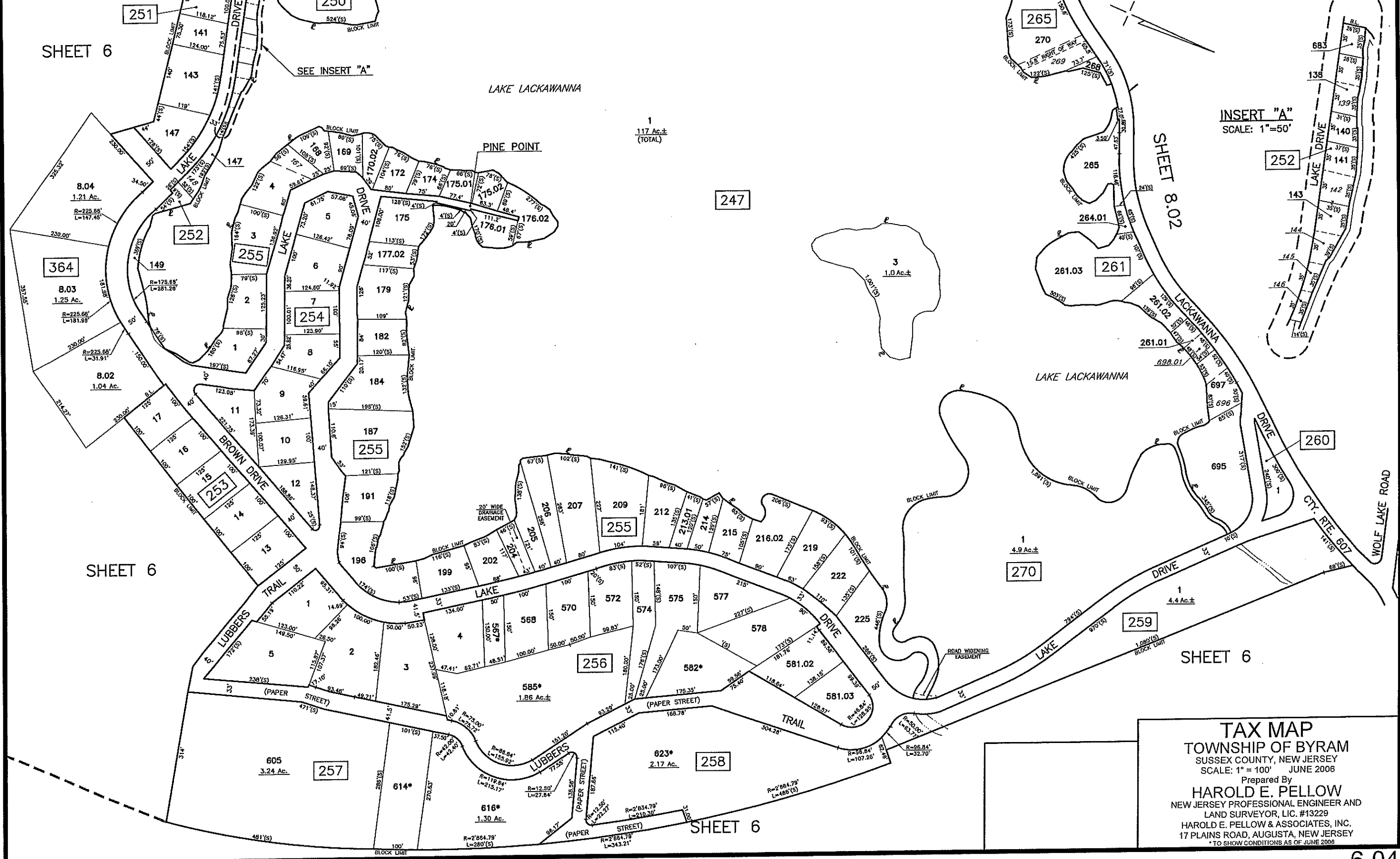
SHEET
 6.03

SHEET 6.03

EXEMPT LOTS *			
BLOCK	LOT	ACREAGE	REASON FOR EXEMPTION
256	567	0.172	TOWNSHIP OF BYRAM
256	582	0.36	OPEN SPACE
256	585	1.86	OPEN SPACE
257	614	0.705	TOWNSHIP OF BYRAM
257	616	1.30	OPEN SPACE
258	623	2.17	OPEN SPACE

MAP REFERENCES:

- THE DETAILS SHOWN ON THESE MAPS ARE BASED ON THE APPROVED ORIGINAL TAX MAPS AND THE GENERAL REVISIONS THERETO, PRIOR TO JUNE 2006. FOR REVISIONS AND CONDITIONS PRIOR TO JUNE 2006, SEE APPROVED ORIGINAL MAPS ON FILE IN THE MUNICIPAL TAX ASSESSOR'S OFFICE.
- THE AREAS, BOUNDARIES, AND DIMENSIONS SHOWN ON THESE MAPS ARE DERIVED FROM AERIAL SURVEYS, RECORDED PLANS, MAPS, DEEDS, AND WALLS AND ARE TO BE USED FOR ASSESSMENT PURPOSES ONLY.



TAX MAP
 TOWNSHIP OF BYRAM
 SUSSEX COUNTY, NEW JERSEY
 SCALE: 1" = 100' JUNE 2006
 Prepared By
HAROLD E. PELLOW
 NEW JERSEY PROFESSIONAL ENGINEER AND
 LAND SURVEYOR, LIC. #13229
 HAROLD E. PELLOW & ASSOCIATES, INC.
 17 PLAINS ROAD, AUGUSTA, NEW JERSEY
 *TO SHOW CONDITIONS AS OF JUNE 2006