

INSERT "A"  
SCALE: 1"=200'

EXEMPTED LOTS *			
BLOCK	LOT	ACREAGE	REASON FOR EXEMPTION
218	1	4.30	STATE OF NEW JERSEY D.O.T.
218.01	1	84.92	STATE OF NEW JERSEY D.O.T.
363	4.03	27.47	NEW JERSEY NATURAL LANDS TRUST
364	5.01	28.17	NEW JERSEY NATURAL LANDS TRUST
364	7	35	NEW JERSEY NATURAL LANDS TRUST
364	8.01	0.07	STATE OF NEW JERSEY D.O.T.
385	21	21.8	TOWNSHIP OF BYRAM
385.08	1	0.51	STATE OF NEW JERSEY D.O.T.
385	1	1.9	STATE OF NEW JERSEY D.O.T.
385	2	6	STATE OF NEW JERSEY D.E.P.
385	3	22.14	STATE OF NEW JERSEY D.O.T.

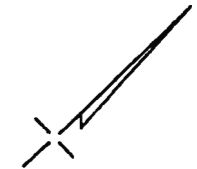
NOTE: LOT ACREAGES SHOWN ABOVE ARE APPROXIMATE AND FOR INFORMATIONAL PURPOSES ONLY.

MAP REFERENCES:

1. THE DETAILS SHOWN ON THESE MAPS ARE BASED ON THE APPROVED ORIGINAL TAX MAPS AND THE GENERAL REVISIONS THERETO, PRIOR TO JUNE 2006. FOR REVISIONS AND CONDITIONS PRIOR TO JUNE 2006, SEE APPROVED ORIGINAL MAPS ON FILE IN THE MUNICIPAL TAX ASSESSOR'S OFFICE.
2. THE AREAS, BOUNDARIES, AND DIMENSIONS SHOWN ON THESE MAPS ARE DERIVED FROM AERIAL SURVEYS, RECORDED PLANS, MAPS, DEEDS, AND WILLS AND ARE TO BE USED FOR ASSESSMENT PURPOSES ONLY.

**TAX MAP**  
**TOWNSHIP OF BYRAM**  
 SUSSEX COUNTY, NEW JERSEY  
 SCALE: 1" = 400' JUNE 2006  
 Prepared By  
**HAROLD E. PELLOW**  
 NEW JERSEY PROFESSIONAL ENGINEER AND  
 LAND SURVEYOR, LIC. #13229  
 HAROLD E. PELLOW & ASSOCIATES, INC.  
 17 PLAINS ROAD, AUGUSTA, NEW JERSEY  
 \* TO SHOW COND T.ONS AS OF JUNE 2006

THE OVERLAPPING LINES AND DIMENSIONS SHOWN ARE PLOTTED IN ACCORDANCE WITH THE METES AND BOUNDS DESCRIPTIONS APPEARING IN THE LAST DEED OF RECORD FOR EACH PARCEL & DO NOT PURPORT TO REPRESENT TITLE OR OWNERSHIP STATUS IN ANY MANNER. THESE SITUATIONS ARE SUBJECT TO SOLUTION BY THE PROPERTY OWNERS CONCERNED.



SHEET 6

SHEET 6.02

SHEET 6.03

SHEET 6

SHEET 6

SHEET 6

AUGUST 2013	
AUGUST 2011	
OCTOBER 2009	
DATE	DATE
REVISED	
HAROLD E. FELLOW & ASSOCIATES INC. HAROLD E. FELLOW - N.J. PROFESSIONAL ENGINEER & LAND SURVEYOR, LIC. NO. 13229	

EXEMPT LOTS *			
BLOCK	LOT	ACREAGE	REASON FOR EXEMPTION
239	508	0.77	TOWNSHIP OF BYRAM

MAP REFERENCER:

1. THE DETAILS SHOWN ON THESE MAPS ARE BASED ON THE APPROVED ORIGINAL TAX MAPS AND THE GENERAL REVISIONS THERETO, PRIOR TO JUNE 2008. FOR REVISIONS AND CONDITIONS PRIOR TO JUNE 2008, SEE APPROVED ORIGINAL MAPS ON FILE IN THE MUNICIPAL TAX ASSESSOR'S OFFICE.
2. THE AREAS, BOUNDARIES, AND DIMENSIONS SHOWN ON THESE MAPS ARE DERIVED FROM AERIAL SURVEYS, RECORDED PLANS, MAPS, DEEDS, AND WILLS AND ARE TO BE USED FOR ASSESSMENT PURPOSES ONLY.

**TAX MAP**  
**TOWNSHIP OF**  
**BYRAM**

BRASSER COUNTY  
SCALE: 1" = 100'

NEW JERSEY  
JUNE 2008

**HAROLD E. FELLOW**

NEW JERSEY PROFESSIONAL ENGINEER AND  
LAND SURVEYOR, LIC. #13229  
HAROLD E. FELLOW & ASSOCIATES, INC.  
17 PLAINS ROAD, ARLINGTON, NEW JERSEY  
CERTIFICATE OF AUTHORIZATION No. 2462788000

SHEET 8.01

SHEET 4

SHEET 6

SHEET 6

SHEET 6.01

SHEET 6.03

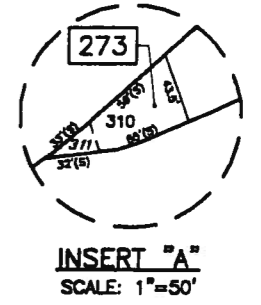
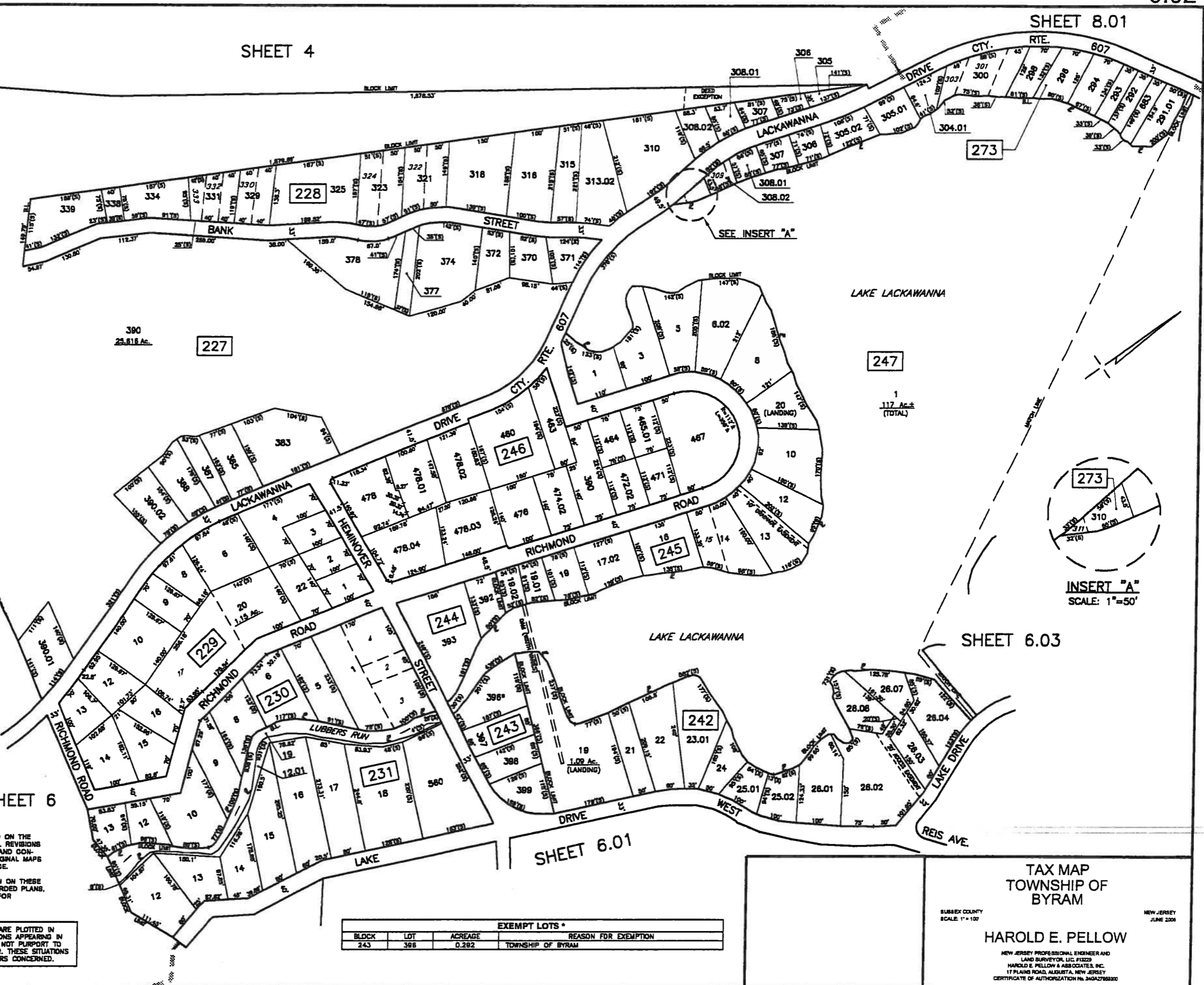
AUGUST 2013	
MARCH 2010	
DATE	DATE
REVISED	
HAROLD E. PELLOW & ASSOCIATES INC. HAROLD E. PELLOW - N.J. PROFESSIONAL ENGINEER & LAND SURVEYOR, LIC. NO. 13229	

MAP REFERENCES:

- THE DETAILS SHOWN ON THESE MAPS ARE BASED ON THE APPROVED ORIGINAL TAX MAPS AND THE GENERAL REVISIONS THERETO, PRIOR TO JUNE 2008. FOR REVISIONS AND CONDITIONS PRIOR TO JUNE 2008, SEE APPROVED ORIGINAL MAPS ON FILE IN THE MUNICIPAL TAX ASSESSOR'S OFFICE.
- THE AREAS, BOUNDARIES, AND DIMENSIONS SHOWN ON THESE MAPS ARE DERIVED FROM AERIAL SURVEYS, RECORDED PLANS, MAPS, DEEDS, AND WILLS AND ARE TO BE USED FOR ASSESSMENT PURPOSES ONLY.

THE OVERLAPPING LINES AND DIMENSIONS SHOWN ARE PLOTTED IN ACCORDANCE WITH THE METES AND BOUNDS DESCRIPTIONS APPEARING IN THE LAST DEED OF RECORD FOR EACH PARCEL. & DO NOT PURPORT TO REPRESENT TITLE OR OWNERSHIP STATUS IN ANY MANNER. THESE SITUATIONS ARE SUBJECT TO SOLUTION BY THE PROPERTY OWNERS CONCERNED.

BLOCK	LOT	ACREAGE	REASON FOR EXEMPTION
243	388	0.282	TOWNSHIP OF BYRAM



TAX MAP  
TOWNSHIP OF  
BYRAM

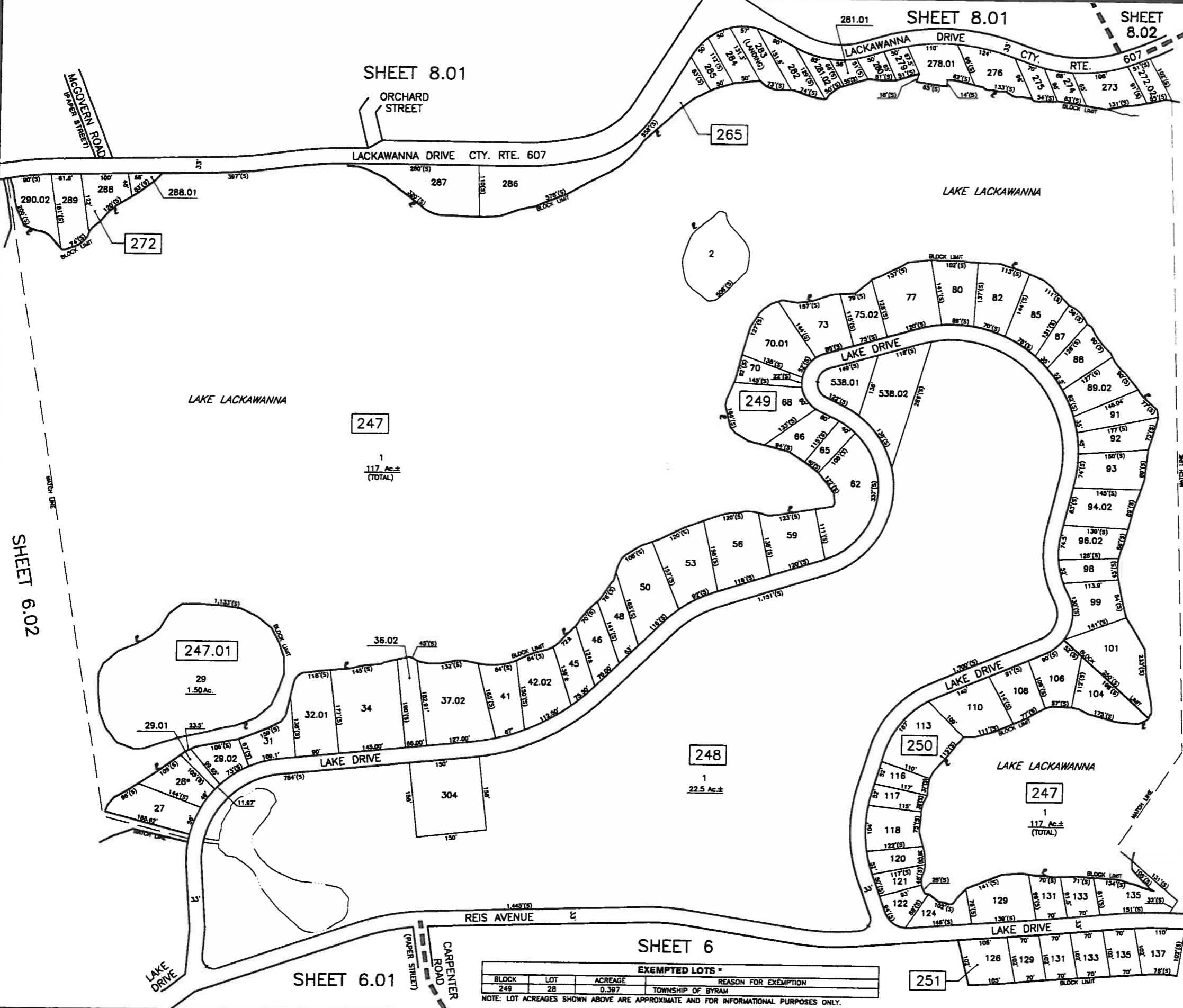
HAROLD E. PELLOW

NEW JERSEY PROFESSIONAL ENGINEER AND  
LAND SURVEYOR, LIC. #13229  
HAROLD E. PELLOW & ASSOCIATES, INC.  
17 PLAINS ROAD, ALBERTA, NEW JERSEY  
CERTIFICATE OF AUTHORIZATION NO. 2602788920

SUBSEX COUNTY  
SCALE: 1" = 100'

NEW JERSEY  
JUNE 2008

MARCH 2010	DATE
JULY 2009	DATE
REVISED	
HAROLD E. PELLOW & ASSOCIATES INC. HAROLD E. PELLOW - N.J. PROFESSIONAL ENGINEER & LAND SURVEYOR, LIC. NO. 13229	



SHEET 6.02

SHEET 6.04

SHEET 6

SHEET 6.01

EXEMPTED LOTS *			
BLOCK	LOT	ACREAGE	REASON FOR EXEMPTION
248	28	0.397	TOWNSHIP OF BYRAM

NOTE: LOT ACREAGES SHOWN ABOVE ARE APPROXIMATE AND FOR INFORMATIONAL PURPOSES ONLY.

- MAP REFERENCES:
- THE DETAILS SHOWN ON THESE MAPS ARE BASED ON THE APPROVED ORIGINAL TAX MAPS AND THE GENERAL REVISIONS THERETO, PRIOR TO JUNE 2008. FOR REVISIONS AND CONDITIONS PRIOR TO JUNE 2008, SEE APPROVED ORIGINAL MAPS ON FILE IN THE MUNICIPAL TAX ASSESSOR'S OFFICE.
  - THE AREAS, BOUNDARIES, AND DIMENSIONS SHOWN ON THESE MAPS ARE DERIVED FROM AERIAL SURVEYS, RECORDED PLANS, MAPS, DEEDS, AND WILLS AND ARE TO BE USED FOR ASSESSMENT PURPOSES ONLY.

**TAX MAP**  
**TOWNSHIP OF BYRAM**  
 SUSSEX COUNTY, NEW JERSEY  
 SCALE: 1" = 100' JUNE 2006  
 Prepared By  
**HAROLD E. PELLOW**  
 NEW JERSEY PROFESSIONAL ENGINEER AND  
 LAND SURVEYOR, LIC. #13229  
 HAROLD E. PELLOW & ASSOCIATES, INC.  
 17 PLAINS ROAD, AUGUSTA, NEW JERSEY  
\* TO SHOW CONDITIONS AS OF MAR. 2010

AUGUST 2013  
 MARCH 2010  
 DATE DATE  
 REVISED  
 HAROLD E. PELLOW & ASSOCIATES INC.  
 HAROLD E. PELLOW - N.J. PROFESSIONAL  
 ENGINEER & LAND SURVEYOR, LIC. NO. 13229

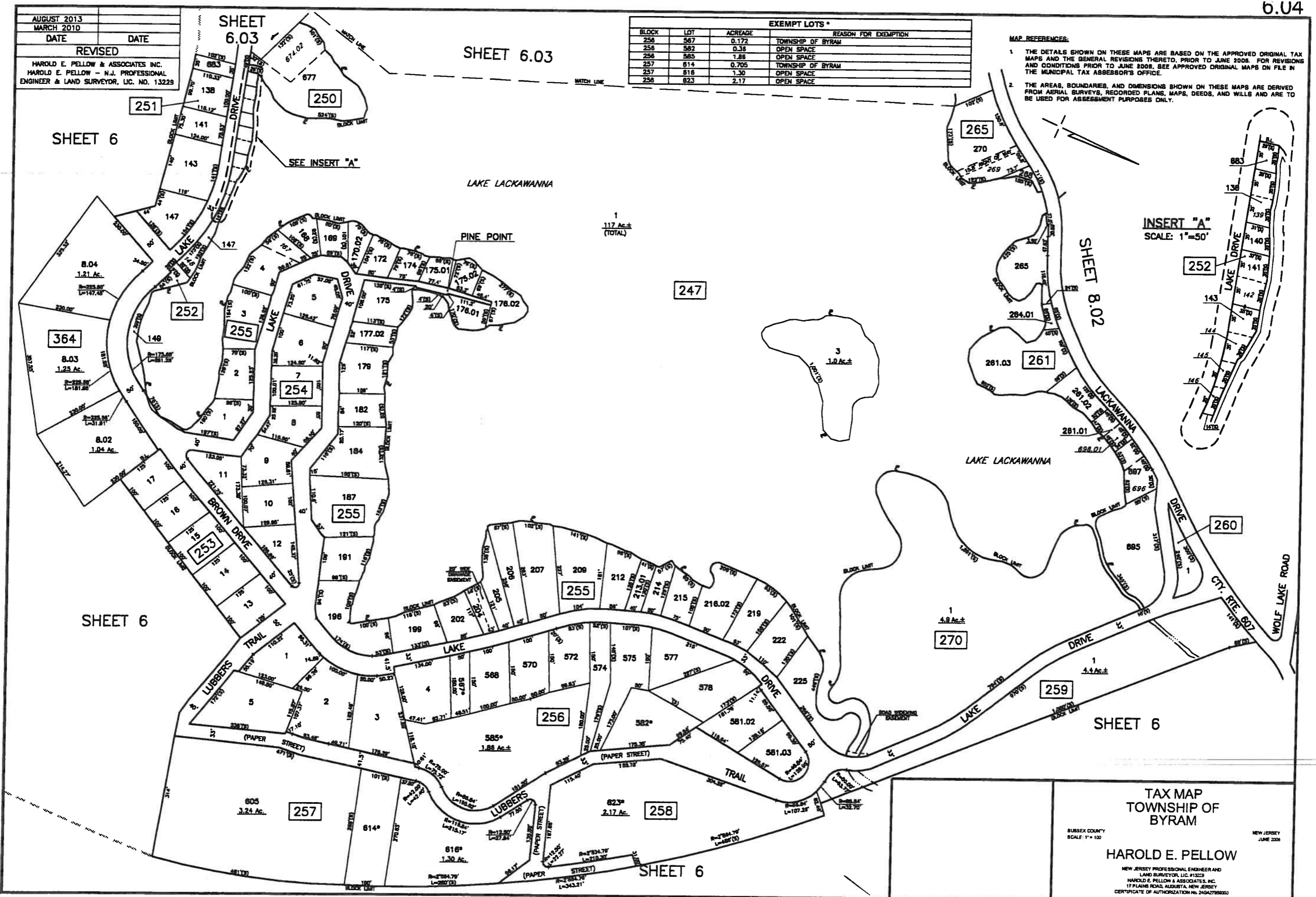
SHEET 6.03

SHEET 6.03

BLOCK	LOT	ACREAGE	TOWNSHIP OF BYRAM	REASON FOR EXEMPTION
256	587	0.172		
256	582	0.38		
256	585	1.88		
257	614	0.705		
257	616	1.30		
258	823	2.17		

MAP REFERENCES:

1. THE DETAILS SHOWN ON THESE MAPS ARE BASED ON THE APPROVED ORIGINAL TAX MAPS AND THE GENERAL REVISIONS THERETO, PRIOR TO JUNE 2008. FOR REVISIONS AND CONDITIONS PRIOR TO JUNE 2008, SEE APPROVED ORIGINAL MAPS ON FILE IN THE MUNICIPAL TAX ASSESSOR'S OFFICE.
2. THE AREAS, BOUNDARIES, AND DIMENSIONS SHOWN ON THESE MAPS ARE DERIVED FROM AERIAL SURVEYS, RECORDED PLANS, MAPS, DEEDS, AND WILLS AND ARE TO BE USED FOR ASSESSMENT PURPOSES ONLY.



INSERT "A"  
 SCALE: 1"=50'

SHEET 8.02

SHEET 6

SHEET 6

TAX MAP  
 TOWNSHIP OF BYRAM  
 SUBSEX COUNTY  
 SCALE: 1"=100  
 HAROLD E. PELLOW  
 NEW JERSEY PROFESSIONAL ENGINEER AND  
 LAND SURVEYOR, LIC. #13229  
 HAROLD E. PELLOW & ASSOCIATES, INC.  
 17 PLAINS ROAD, AUGUSTA, NEW JERSEY  
 CERTIFICATE OF AUTHORIZATION No. 246A2752003  
 NEW JERSEY  
 JUNE 2008